

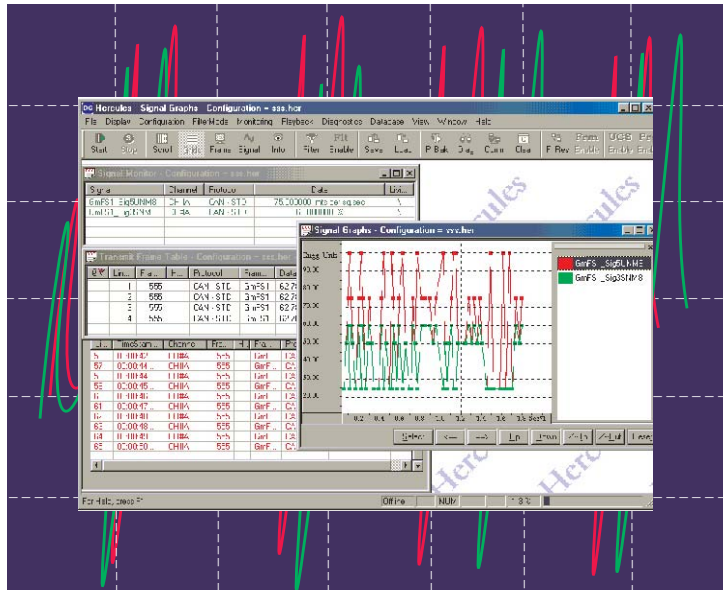


CONNECTIONS

A Publication of Dearborn Group, Inc.

Winter 2003

HERCULES 3.0 for CAN, J1850 and LIN



This Issue:

DPA USB

Preview of DG's new tool
Page 3

Affiliate Update: Dearborn Electronics-India

Page 2

Technical Support: Gryphon Fault-Tolerant Wiring

Page 2

Training: LIN and J2534 classes added

Page 3

The new Hercules 3.0 incorporates support for LIN, J1850, FT CAN, SW-CAN and other CAN to deliver a complete analyzer tool for a multitude of development, testing, and diagnostics environments. These and other new Hercules features offer its users many improvements

“With this new version of Hercules 3.0, we deliver an ideal tool for all of our customers needs in their various development, testing, and diagnostics environments”

-Mark Zachos, President

to ensure better performance and productivity in its various applications.

In addition to the support of two new protocols, users are pleased with enhancements including filters working on receive and

transmitted frames, hot key send of services and support of all GMLAN GMW3110 services for diagnostics, graphical or numerical display on statistic monitor, and display of IDs on network for information view.

Hercules 3.0 will be showcased at the 2003 SAE World Congress at Cobo Center in Detroit, MI; on March 3-6. Attendees will be able to see Hercules 3.0 running on multiple protocols simultaneously.

HERCULES 3.0

- ▶ **82527 CAN modules**
 - Auto switch into High Speed mode for single-wire CAN (on/off)
- ▶ **SJA1000 CAN module**
 - Non-intrusive monitoring (ACK on/off) support
 - Remote frames requests support
 - Setting of error level reporting
 - Software setting for termination
- ▶ **LIN module**
 - Master and slave modes
- ▶ **HBCC module (J1850, PWM, SCP)**
 - IFR support
- ▶ **DCX module (J1850 VPW)**
 - IFR support
- ▶ **DLC module**
 - Master and slave modes

Partner Update

Digalog Systems, Inc.

Digalog Systems provides manufacturing and design validation electronics test equipment for the automotive and medical industries. Our continued dedication to reducing cost associated with test solutions has provided an excellent working relationship with Dearborn Group Technology. Dearborn Group offers a wide variety of mature protocol tools that have been utilized in some of Digalog Systems Directed Functional Test Systems. The following examples outline the usage of some of the Dearborn Group tools at Digalog Systems.

The DG-VSI / C2 Vehicle Link Tester / Vehicle Serial Interface tool has helped Digalog Systems develop and maintain protocol interface used for remote manufacturing environments. One particular RF Test Solution uses this tool to test over 10,000 units a week.

The Dearborn Group Gryphon tool has been utilized in both a manufacturing capacity and a development capacity. Digalog Systems has integrated this tool to the extent of creating a 19" rack mount capable of accommodating two Gryphon boxes with cabling. As a laboratory tool, Digalog Systems retains several different configurations of the Gryphon for test solution design, development and debugging.

Affiliate Update

Dearborn Electronics -India

Dearborn Electronics India (DEI) recently organized a special GMLAN training session for Delphi India automotive center. Cyrilla Jane Menon has traveled from Dearborn Group's headquarters to provide this session which featured practical, hands-on training that provided participants with practical knowledge that can be readily related and applied.

DEI also took part in the one-day National workshop on "Recent Advances in Automotive Electronics" at IIT, Madras, in October of 2002. Cryilla Jane Menon also provided a special session on "Future Trends on vehicle networking."

DEI has the capabilities to carry out custom in-house seminars on multiplexed network protocols. For details and agenda, please contact our sales office at 080-6632617.

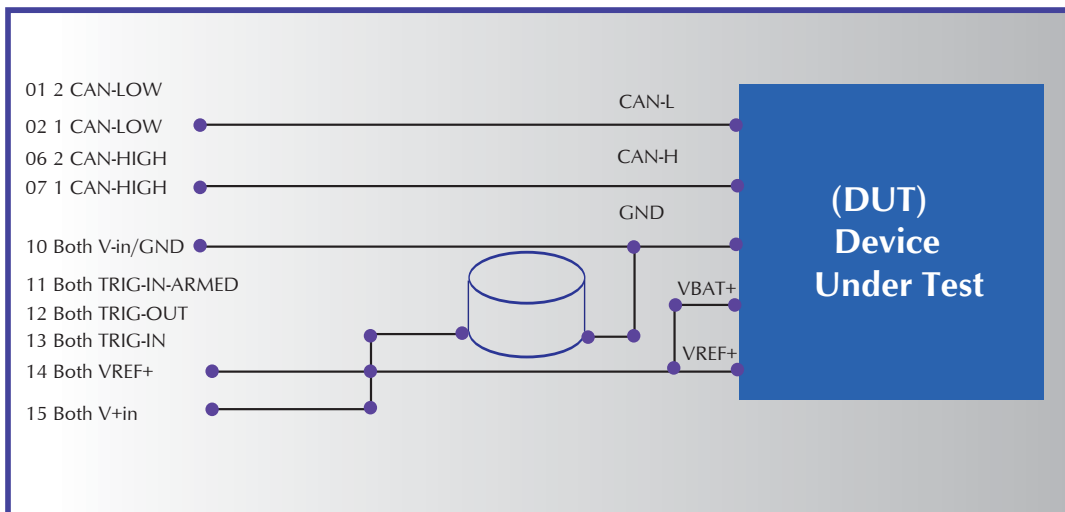


Technical Support

by: Chad Harnish

Gryphon Fault-Tolerant CAN Wiring

To all those working with Fault-tolerant CAN, this wiring diagram will save you time and also avoid damage to your Gryphon hardware unit.



LIN and J2534 seminars added

DG has added two new classes to its seminar schedule:

The LIN class (Local Interconnect Network) will focus on the basics of the protocol including an overview and labwork.

The J2534 class is intended to familiarize students with SAE's J2534 specification and covers a detailed intro to vehicle networks, vehicle diagnostics basics, intro to J2534 spec, along with hands-on labwork taught using Microsoft's Visual C++.

For a detailed listing of DG seminar descriptions please visit our website at <http://www.dgtech.com/seminars.phtml>.

Coming Soon-DPA/USB!

Scheduled for release this spring, the next version of the Dearborn Protocol Adapter (DPA) will support USB 2.0 to compatible devices. USB 2.0 runs at a rate of 480Mbit/second and is backward compatible with the USB 1.1 rate of 10Mbit/second.

As serial ports continue to disappear from many new computers, and as other devices like PDA's increasingly support USB communication interfaces, USB 2.0 was selected because of the common interface it provides and the high data transfer rate.

The DPA is a datalink adapter tool designed to off-load the host application of in-vehicle network communication tasks. The DPA is widely used for commercial and military vehicle diagnostics, test & validation, engineering development, and as part of production equipment. It supports many in-vehicle networks including CAN/J1939, GM LAN, J1587/J1708, some J1850 and ISO-9141, to name a few <http://www.dgtech.com/products/dpa.phtml>.

Dearborn Group Inc.

**Phone 248-488-2080 • Fax 248-488-2082
dg@dgtech.com • <http://www.dgtech.com>**

Seminars

LIN

- ▶ Jan. 27
- ▶ Feb. 18
- ▶ Mar. 25
- ▶ Apr. 14



J2534

- ▶ Mar. 17

In-Vehicle Networking I

- ▶ Feb. 4-5
- ▶ Feb. 24-25 (Kokomo, IN)
- ▶ Mar. 11-12
- ▶ Mar. 24-25 (Kokomo, IN)
- ▶ Apr. 1-2

In-Vehicle Networking II

- ▶ Feb. 6-7
- ▶ Feb. 20-21 (Kokomo, IN)
- ▶ Mar. 4-5
- ▶ Mar. 26-27
- ▶ Apr. 3-4
- ▶ Apr. 24-25 (Kokomo, IN)

CAN and Higher Layer Protocols

- ▶ Jan. 22-23 (Kokomo, IN)
- ▶ Jan. 29-30
- ▶ Feb. 11-12
- ▶ Feb. 13-14 (Kokomo, IN)
- ▶ Mar. 18-19
- ▶ Mar. 20-21 (Kokomo, IN)
- ▶ Apr. 8-9
- ▶ Apr. 10-11 (Kokomo, IN)

VSI/VLT/J1850

- ▶ Jan. 23
- ▶ Mar. 21

KWP2000 and Diagnostics on CAN

- ▶ Mar 13

GMLAN S-CAT/ Hercules

Ask your sales rep about our free S-CAT training