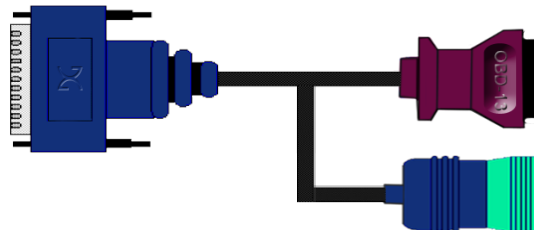
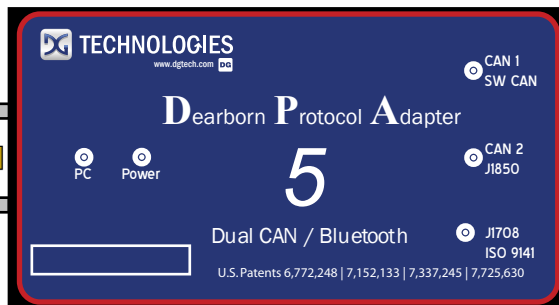
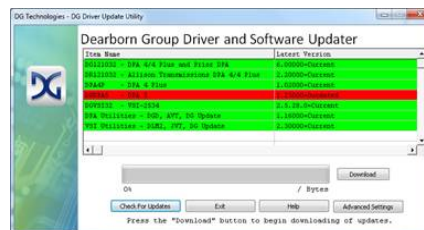
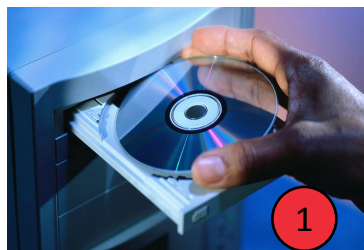


DPA 5 Quickstart Guide



Instructions:

- 1 Install RP1210 and J2534 compliant drivers from the CD. The latest drivers can always be found at <http://www.dgtech.com>
- 2 After rebooting, you are prompted to check for updates. Connect to the Internet and press "Continue", then "Check for Updates". If there are updates (red), press the "Download" button.
- 3 Connect the USB cable from the DPA to the PC. Then, connect the vehicle cable to the DPA.
- 4 Connect the vehicle cable to the vehicle or equipment's diagnostic port.
- 5 Configure your application to use the DPA. The "DPA User Manual" (Start->All Programs->Dearborn Group Products->DPA 5->Documentation->DPA 5 User Manual) contains information for configuring many of the most common applications. It also contains detailed information on troubleshooting your DPA.