

# GRYPHON

A multi-protocol, high-speed Ethernet tool



**GRYPHON** is a hardware interface that provides remote connectivity for multiplexed automation and automotive communication networks. It uses an Ethernet connection to provide a high-speed user interface. Users can write their own applications using the provided client communication protocol specification.

## User configurable and upgradeable

The Gryphon is upgradeable and configurable to keep up with the user's changing needs. Users can plug different network protocol module cards in and out of the tool, so that it can be configured to fit their needs. As new protocols are developed, users can easily add additional protocol modules to support that latest protocol. Also, the Gryphon can hold up to 3 CAN cards, to allow users to test multiple devices at one time.

## Multiple user connection

Because the Gryphon uses high-speed Ethernet, multiple users in different locations can connect to the tool simultaneously.

## Write your own analyzer or use off-the-shelf software

Gryphon users can choose from our variety of off-the-shelf software applications ranging from our free GryphMon monitoring software to our high-end Hercules analyzer for CAN, LIN, and J1850. Users can also write their own applications using our DLLs, which includes the J2534 API.

## Key Features

User configurable and upgradeable

High bandwidth Ethernet connection to PC or any TCP/IP connection

Allows multi-user connection

Can use various analyzer packages or create your own using our DLLs or optional Labview Drivers

Supports 3 network protocol modules simultaneously

Works in standalone mode with user embedded applications

Equipped with 5-line LCD display with membrane controlled keypad

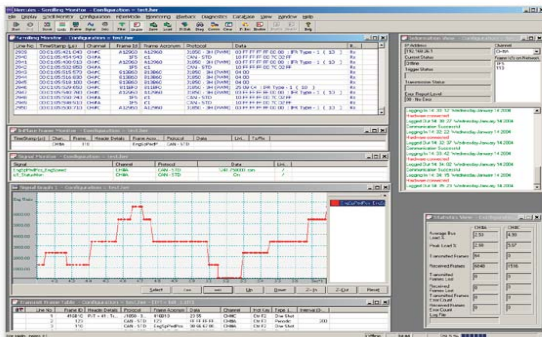
Supports wide voltage range from 6-32VDC through a modular power supply

**DG** Dearborn Group  
Technology

## Product Specifications

<b>Product Designation</b>	DG-GRYPH
<b>Size</b>	2.25" x 8.5" x 5.31"
<b>Operating Voltage Range</b>	6-32VDC
<b>Environmental</b>	
Storage Temperature	-40 to 85 degrees C
Operational Temperature	0 to 70 degrees C
<b>Hardware features</b>	Embedded Linux Operating System 3 protocol module slots
<b>Deliverables</b>	Hardware unit Power Adapter RS-232 Cable Null Ethernet Cable Installation Manual
<b>Protocol Modules</b>	
<b>CAN modules</b>	
W Single-wire CAN (SJA1000sw)	
I ISO 11992 CAN	
J ISO 11898 CAN (SJA1000)	
A Fault-Tolerant CAN (SJA1000FT)	
<b>J1850 modules</b>	
F Ford J1850 (SCP)	
G GM J1850 (Class 2, DLC)	
C Chrysler J1850 (VPW), SCI	
<b>Other modules</b>	
K KWP2000/ ISO 9141	
H Honda UART	
L LIN	
IO I/O card	

<b>Optional Software/drivers</b>	Hercules Falcon Scripting Client Labview
----------------------------------	---



## Applications

**PV/DV Testing**

**Diagnostics**

**Analyzer/Interface**

**Flight Recorder**

**EOL Testing**

**Simulation**

**Calibration**

**Reflashing ECUs**

**Protocol Gateway**

For product or domestic and international sales office information, contact:

**Dearborn Group Inc.**

27007 Hills Tech Court  
Farmington Hills, MI 48331

(248) 488-2080

(248) 488-2082 FAX

<http://www.dgtech.com>

**DG** Dearborn Group  
Technology