

GRYPHON

Quick Start Guide

This guide is provided to explain basic installation. For further details please reference the manual provided on the CD.

Package Contents

- Gryphon Interface (with up to 3 network modules)
- 12 VDC Universal A/C power adapter
- Ethernet crossover (null) cable
- DB solder cup connector for each network module
- Installation CD with:
 - C, C++ and VB libraries and samples
 - J2534 API and samples
 - Hercules analyzer software (if purchased)
 - Gryphon Installation manual (PDF)
 - Fiber Optic Products: Satellite Module and Bridge Installation Manual (PDF)
 - Adobe Acrobat reader 4.05
 - GryphMON - a mini monitoring program
 - GryphSpeeds - CAN speed configuration program

Software installation

The CD contains various Gryphon related software.

Instructions for Windows Users

1. Insert the CD into the drive on the computer.
2. On the desktop, click *My Computer*.
3. Select the appropriate drive (i.e., Compact Disc (F:)) and double-click the selection. The CD contents will appear.
4. Next, select the appropriate application. Depending on your selection, the program may either auto-install or need to be copied to your hard drive for further use.

Power connection

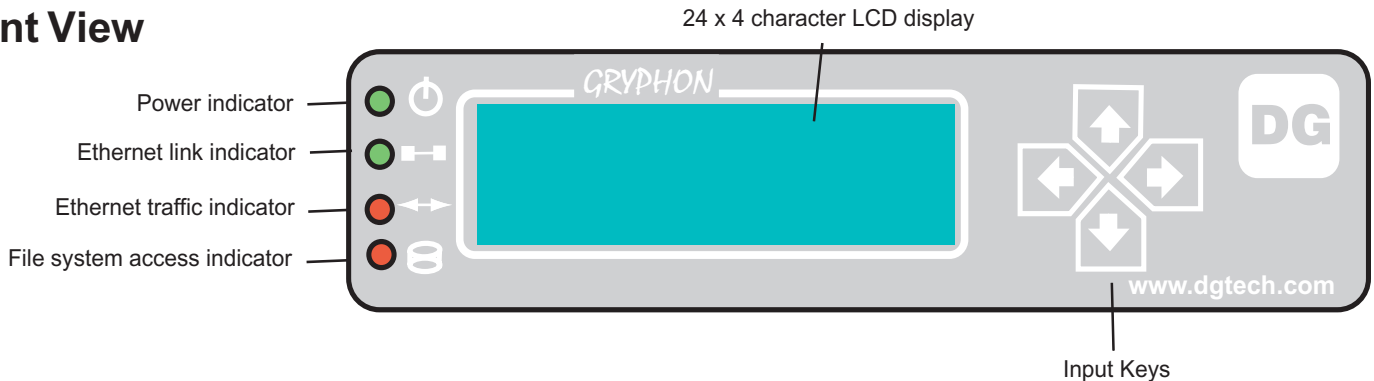
Connect the enclosed A/C power adapter to the Power connector on the back of the Gryphon. Power can also be supplied through a SINGLE network module. **IMPORTANT** - Only apply **one** power source to the Gryphon, (See section 2.1.2.2 *Power Connector* in your **Gryphon Installation** manual).

Powering up the hardware

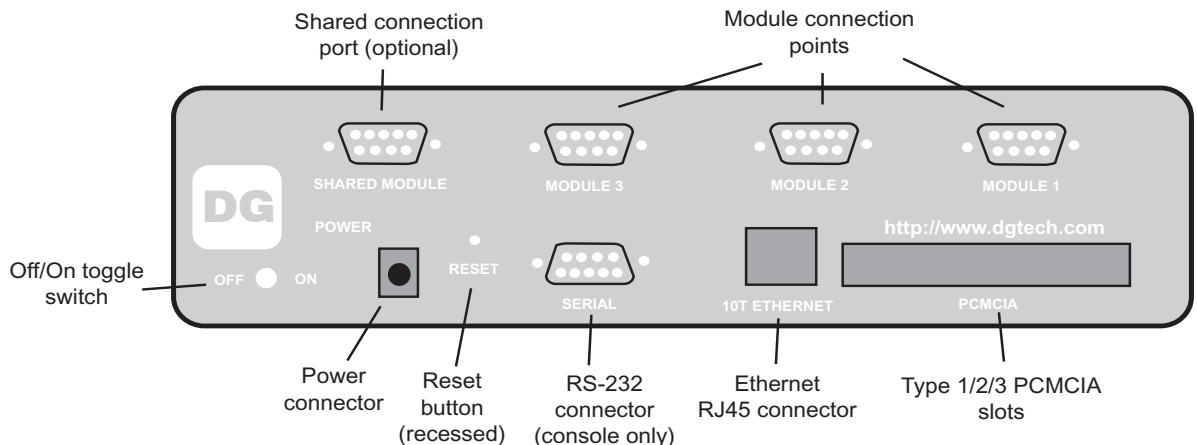
Once a power source has been connected, flip the toggle switch to the ON position. The POWER LED should light and the FILE SYSTEM ACCESS indicator will blink denoting the hardware is active. The Gryphon is fully "booted" after it has beeped twice.

Hardware layout

Front View



Rear View



Vehicle network connection

The vehicle network connection will vary depending on the network module(s) you have purchased. Pinouts are described in in *Appendix B* of the **Gryphon Installation** manual (located on the install CD).

Ethernet connection

An Ethernet connection can be made from the Gryphon hardware directly to a PC directly or through a building network (typically through an Ethernet hub or switch).

POINT-TO-POINT CONNECTION (Directly to a PC)

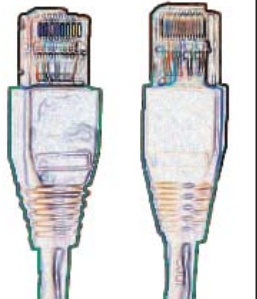
Connect one end of the supplied crossover Ethernet cable to the Ethernet RJ45 connector on the Gryphon, and the other end directly to the Ethernet connection on the PC.

BUILDING NETWORK CONNECTION (or Hub)

This requires a standard RJ45 (straight-through) Ethernet cable (not supplied). Connect one end of the Ethernet cable to the Ethernet RJ45 connector on the Gryphon and the other end directly to the building jack or hub.

TIP: How do I know what type of Ethernet cable I have?

Hold the two ends of the cable side-by-side. If the color sequence of wires (as viewed through the transparent RJ45 connector) exactly match on the connector the cable is a straight-through Ethernet cable.



Another indicator that you have the right cable connected is if the Ethernet link indicator on the front of the Gryphon hardware is lit.

CONFIGURING THE ETHERNET CONNECTION

You may need to perform one or more of the following steps to configure the Ethernet connection.

THREE STEPS:

- SELECT THE DHCP MODE TYPE.
- CONFIGURE THE GRYPHON HARDWARE
- CONFIGURE THE PC NETWORK SETTINGS

Select the DHCP mode type

Every TCP/IP device on a given Ethernet network needs a unique IP address assigned to it to participate on that network. DHCP is a protocol that allows a designated server to assign unique IP addresses to clients that request them.

Gryphon can operate in three different DHCP modes:

DHCP Server Mode

This mode can be used to connect Gryphon point-to-point to a PC directly if the PC is configured to acquire its TCP/IP settings automatically.

Recommendation: When using this mode it is better to power the Gryphon hardware up first so that it is ready to serve the IP Address to the PC when the PC powers up.

Caution: Use this method **only** with a point-to-point connection. If the Gryphon in server mode is connected to a building network, it could cause network malfunctions!

DHCP Client Mode

This mode is used when a DHCP server will be assigning IP addresses to Gryphon. It assumes that the Gryphon and PC are connected to an Ethernet jack (or hub) which is then connected to a network containing the DHCP server. Once an IP address is assigned, it is shown on the Gryphon's LCD display.

Recommendation: You may need to consult with your system administrator for assistance.

DHCP Off - Static IP Mode

This mode allows the Gryphon to be connected point-to-point or to a building network. A Static (non-changing) IP Address is configured into the Gryphon. For point-to-point connection, it assumes the PC is configured with a Static IP Address. For building connection, it must be assigned a non-conflicting address.

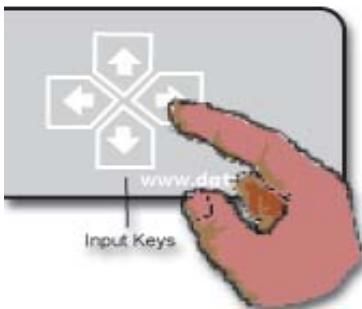
Recommendation: You may need to consult with your system administrator for assistance. If connecting to a LAN, your systems administrator may need to assign you a Static IP Address.

(Further information can be located in *Appendix C* of the **Gryphon Installation** manual.)

Configure the Gryphon hardware

Gryphon hardware provides two ways to change the TCP/IP settings: the LCD / Keypad Interface or the on-board webpage. Described here is the method to configure the settings through the LCD / Keypad Interface located on the front of the hardware. (For webpage setup, see section 3.3 *Configuring the IP Address* in the **Gryphon Installation** manual.)

- 1 Select DHCP Configuration Type:
 - Press and hold the ← key to change the LCD display from the rotating Status Menu to the Configuration menus.
 - Use the ↑ / ↓ keys to locate <sys_menu>, then press → key to access.
 - Use the ↑ / ↓ keys to locate <DHCPsetup>, then press → key to access.
 - Use the ↑ / ↓ keys to select STATIC, SERVER, or CLIENT mode, then press → key to access.



- 2 Set TCP/IP parameters
 - If not in the configuration menu section, press the back arrow key to change the LCD display.
 - Use the ↑ / ↓ keys to locate <sys_menu>, then press → key to access.
 - Use the ↑ / ↓ keys to locate <IPsetup>, then press → key to access.
 - Use the ← and → arrow keys to move the cursor to the digit you wish to modify. Use the ↑ and ↓ arrows to scroll through appropriate number - 0 to 9. Once the last digit of the parameter has been set, press the → key again; a "Done->" symbol will appear to the right of the display. Press the → key once more, and the next setup screen will appear.



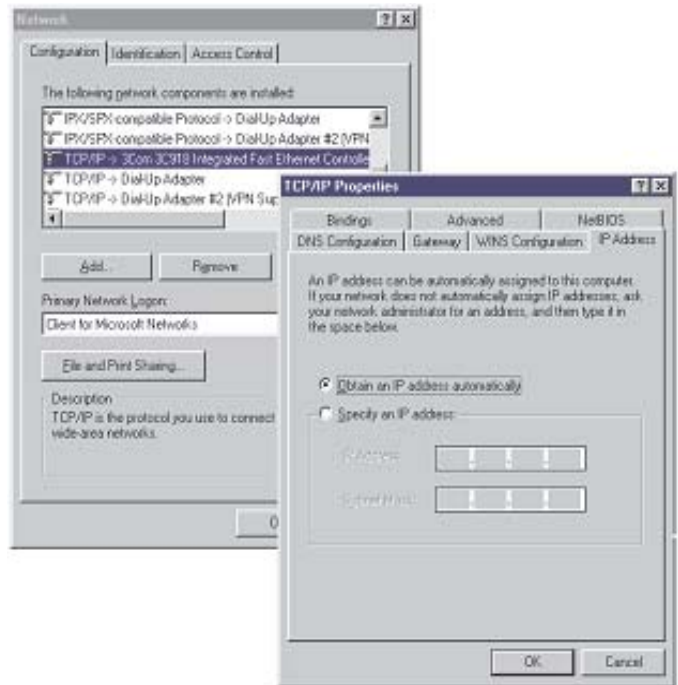
After using the arrow keys to change the numbers accordingly, press → arrow key once to leave. You will be prompt to enter the *IP Address*, *Netmask*, *Broadcast*, and *Default Route*. The network settings will be updated.

After completion, to return to the normal rotating menu, by using the arrow keys to select <STATUS>, then press the → key.

Configure the PC Network Settings

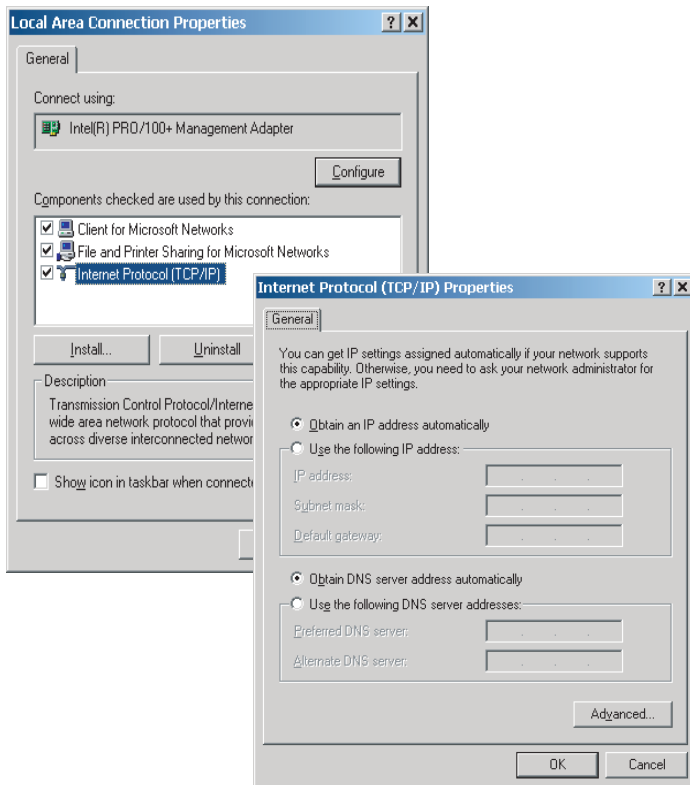
Set the DHCP Mode of the PC using Windows 98 or ME

1. Click the Windows **Start** button, followed by **Settings** and then **Control Panel**.
2. Double-click the **Network** icon. This displays the "Network" dialog (background).
3. Click to select/highlight the "TCP/IP controller" item.
4. Click the **Properties** button. This displays the "TCP/IP Properties" dialog (foreground).
5. You must next select the applicable DHCP Mode (either DHCP Client or Static IP) by using either of the following methods.
 - a. For DHCP Client mode - Select **Obtain IP address automatically** (DHCP Server Mode).
 - b. For STATIC IP mode - Consult with your system administrator for assistance.
6. Keep clicking **OK** until all network setup windows are closed.
7. Confirm that all cables are securely connected to the Gryphon and the PC.
8. Cycle power (off/on) to the Gryphon to implement any configuration changes.
9. Restart your computer. This must be the last task performed to ensure that the computer will get an IP address from Gryphon.



Setting the DHCP Mode of the PC using Windows 2000 or XP

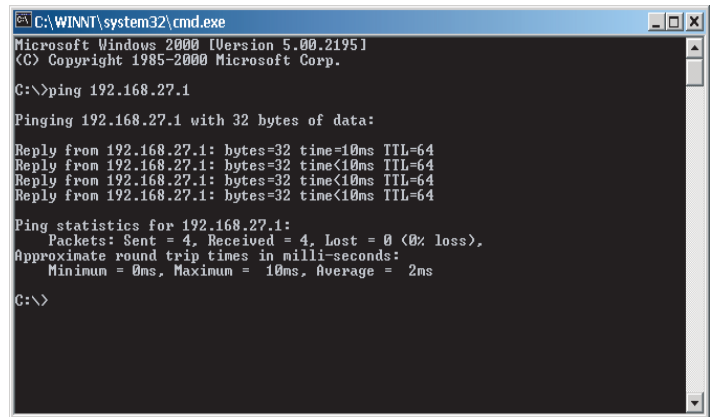
1. Click the Windows **Start** button, followed by **Settings** and then **Control Panel**.
2. Double-click the **Network and Dial-up Connections** icon. This displays the "Network and Dial-up Connections" dialog.
3. Click to select/highlight the "network device" in your PC to which the Gryphon will be connected.
4. Right-click this "network device" item and select **Properties**. This displays a "...Properties" dialog (background).
5. Select/highlight the Internet Protocol (TCP/IP) item and click the **Properties** button. This displays a "...TCP/IP Properties" dialog (foreground).
6. You must next select the applicable DHCP Mode (either DHCP Client or Static IP) by using either of the following methods:
 - a. For DHCP Client mode - Select **Obtain IP Address Automatically** and **Obtain DNS address automatically** (DHCP Server Mode)
 - b. For STATIC IP mode - Consult with your system administrator for assistance.
7. Keep clicking **OK** until all network setup windows are closed
8. Confirm that all cables are securely connected to the Gryphon and the PC.
9. Cycle power (off/on) to the Gryphon to implement any configuration changes.
10. Restart your computer. This must be the last task performed to ensure that the computer will get an IP address from Gryphon.



Verifying communication

To verify that your settings/configuration are correct you need to PING Gryphon. Please perform the following to do this:

1. Click the Windows **Start** button
2. Click **Run**
3. For Windows 98/ME, type "Command" in the Edit Box. For Windows 2000/XP, type "cmd".
4. A DOS console window will open. At the command prompt, type: "ping 192.168.1.1". Substitute "192.168.1.1" with the chosen IP address or with one that your network administrator assigned to you. You should see something similar to the following text listed for a successful connection.



5. If you were able to successfully ping the Gryphon, then your setup is complete.
6. If the replies do not come back successfully then something is not configured correctly. Please verify the previous steps or call DG's Technical Support for further help.

