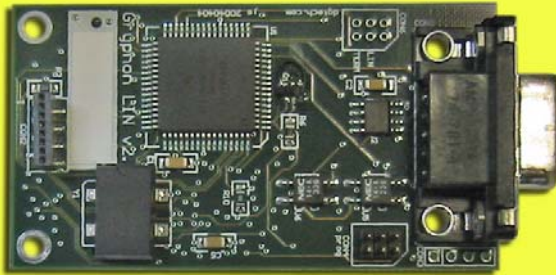
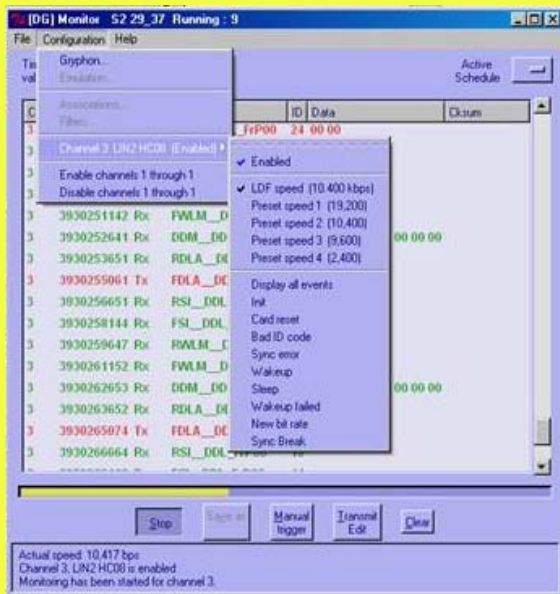


The *GRYPHON* LIN 2.0 / J2602 card with LDF support

GRYPHON LIN 2.0 card



GRYPHON LIN configuration software



Dearborn Group's *GRYPHON* LIN configuration and monitor software (*gryph_lin*) allows a user to select an LDF (LIN Description File) which is used to configure a LIN card to emulate one or more of the nodes defined in the LDF.

From the Main Display screen a user can view LIN bus traffic and modify the data being sent by any node being emulated. In addition, if the master node is being emulated, the user is able to select a schedule to run and to send out individual ID frames by name or by value.

Other features are:

- Selectable LIN bus slew rates;
- Master and/or slave node emulation;
- Emulation of multiple nodes on one or more cards on one or more *GRYPHONS*;
- Optional display of bus events – e.g., Sleep, Wakeup, Init, Sync Error, Bad ID Code, Card Reset;
- Messages and events may be saved to a file.

About Dearborn Group Inc.

Dearborn Group Inc. (DG) specializes in the design and development of intelligent software and hardware protocol interface devices for the in-vehicle and controller area network markets. In addition DG offers consulting services and provides various training seminars on in-vehicle networks.

For additional information: visit our Web site or contact us at the office listed below.

Dearborn Group, Inc.
27007 Hills Tech Court
Farmington Hills, MI 48331-5723

Main Office
Phone (248) 488-2080
Fax (248) 488-2082