

Super CAN Analysis Tool 2

Compact high-end analyzer



S-CAT2 is a hardware / software package that combines high-end analysis functions with a compact automotive network interface. Along with the Hercules high-performance analyzer software, the hardware's 100_T Ethernet connection provides a high-speed user interface. With two on-board CAN channels (one HSCAN, one SWCAN) the hardware also allows additional network or I/O modules to be added. The Hercules software supports LIN and Class2, along with the CAN.

Enhanced software feature set

The S-CAT2 package is shipped with the latest Hercules analyzer software. Along with various transmit and receive features (see Hercules flyer for more details), advanced features include keystroke send of diagnostics services (for GMLAN, ISO 15765, and SAE J1979), UEF and DBC database import, and signal graphing.

Both hardware and software support all features for multiple protocols. These include CAN (different variants), LIN and J1850 variants (Class 2, SCP, and DCX). This allows the software to timestamp events across networks, or to act as a gateway.

Compact Size

The S-CAT2 has a compact size which increases its portability. Only weighing 16 ounces makes it easy to use on the road.

Increased throughput

With a speedier processor and redesign, the S-CAT2 hardware is faster and has more throughput than the previous version. This will speed up analysis and reflash applications.

Wireless version available

The S-CAT2 features are also available in a wireless Ethernet interface.

Key Features

Software specific

GMLAN (GMW3110), ISO 15765, and SAE J1979 Diagnostic Services

UEF and DBC database import

Signal graphing and monitoring

Multi-protocol support in one screen - CAN (J1939, J2284, single wire, fault tolerant, etc.), LIN and J1850 (Class 2, SCP, DCX)

Hardware specific

Compact size and weight

Two on-board CAN channels (HSCAN, SWCAN) with plug-in card option for additional protocols. New GMW3089 ver. 2.2 physical layer for SWCAN.

Increased throughput for faster reflash applications

Support for 10/100 TCP/IP Ethernet and allows multi-user connection

Includes DLLs to create your own applications - SAE J2534, C, C++, Visual Basic

Wireless Ethernet interface available

PCMCIA slot available

Product Specifications

Product Designation	DG-S-CAT2	DG-S-CAT2-PCMCIA	DG-S-CAT2-WIRELESS
Size	2"H x 5.25"W x 4.25"D 16.7 oz.	2"H x 5.25"W x 4.25"D 16.7 oz.	2"H x 5.25"W x 4.75"D 16.7 oz.
Operating Voltage Range	6-40VDC	6-40VDC	6-40VDC
Deliverables S-CAT2 hardware with: - 1 ISO11898-2 CAN channel (Philips TJA1050) - 1 J2411 CAN channel (Infineon TLE 6250) - 1 module slot - External RS-232 application port HERCULES analyzer software Easy (J2534) API C, C++, Visual Basic Library Universal power adapter Null Ethernet cable Manuals		Additional PCMCIA slot	Enclosed wireless Ethernet interface

Optional Protocol Modules DG-GRYPH-MOD-X

CAN modules

- W** Single-wire CAN (SJA1000sw)
- I** ISO 11992 CAN
- J** ISO 11898 CAN (SJA1000)
- A** Fault-Tolerant CAN (SJA1000FT)

J1850 modules

- F** Ford J1850 (SCP)
- G** GM J1850 (Class 2, DLC)
- C** Chrysler J1850 (VPW), SCI

Other modules

- K** KWP2000/ ISO 9141**
- H** Honda UART**
- L** LIN
- U** Ford UBP**
- IO** I/O card**

** No Hercules Software Support

Cable Options

- DG-DB9F-F02-CABLE OBDII to DB9 cable for connection to S-CAT shared module
- DG-ODBII-Y-CABLE 10" adapter with OBDII male to 2 OBDII female connectors
- DG-DB9-F04-CABLE 4 M open-ended cable with DB9 female connector

Applications

Analyzer / Interface

- Synchronize timestamps across multiple protocol networks with Scrolling Monitor

Protocol Gateway

- Relay messages from one network to another with Frame Responder or Program Blocks

PV/DV Testing

- Setup automated scripts with UCS or Program Blocks

Diagnostics

- Pull codes with decoded description displayed in Diagnostic View
- Diagnostic Services for GMLAN (GMW3110), ISO 15765, and J1979

Simulation

- Emulate ECU with periodic messages from TFT and Frame Responder

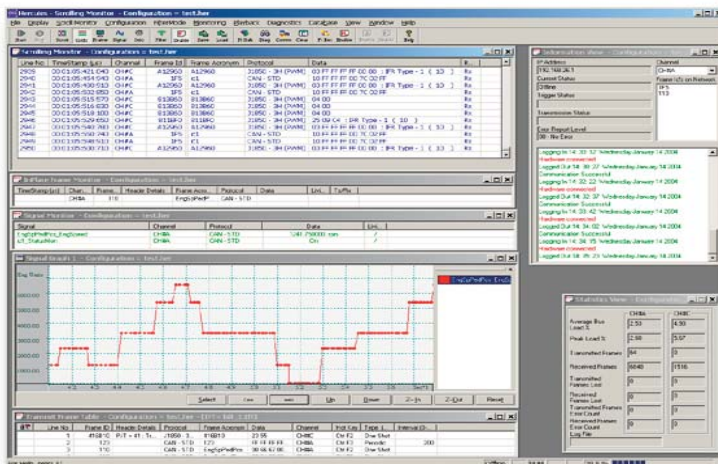
Reflashing ECUs

- Supports GM's DSPTool for Class 2 or single message send in Diagnostic menu

For product or domestic and international sales office information, contact:

Dearborn Group Inc.
27007 Hills Tech Court
Farmington Hills, MI 48331
(248) 488-2080
(248) 488-2082 FAX

<http://www.dgtech.com>



DG Dearborn Group
Technology