

Vehicle Link Tester - Class 2

GM Class 2 and ALDL

The Vehicle Link Tester - Class 2 (VLT-C2) is a vehicle serial communications diagnostic tool designed to be used in General Motors implementation of the SAE J1850 (Class 2) bus. The VLT-C2 consists of a Vehicle Serial Interface - Class 2 (VSI-C2) module, VLT-C2 software, and and required cables.

Applications

- ◆ Design validation
- ◆ Monitoring/analysis
- ◆ Reliability testing
- ◆ Node simulation
- ◆ Vehicle powertrain development



Hardware Features (VSI-C2)

OPERATING MODES

- ◆ Software host
- ◆ RS-232 interface

NETWORKS SUPPORTED

- ◆ J1850 (GM Class 2 version)
- ◆ GM ALDL

CONFIGURABLE FEATURES

- ◆ Bus loading
- ◆ Class 2 baud rate and pins
- ◆ Latency calculation
- ◆ Analog channels

Software Features (VLT-C2)

CLASS 2 BUS MONITOR

- ◆ Two monitor modes: scrolling and message
- ◆ Message storage
- ◆ 16 message filters
- ◆ List or hot-key message transmit

EVENT HISTORY RECORDER

- ◆ Real-time data acquisition
- ◆ Three modes: snapshot, circular, and triggered
- ◆ Activation in monitor, scanner, and simulation modes

SCANNER

- ◆ Graphic display of data
- ◆ Active or passive data collection
- ◆ Data display in engineering units, line graphs, bar charts, or text

MESSAGE SCHEDULER

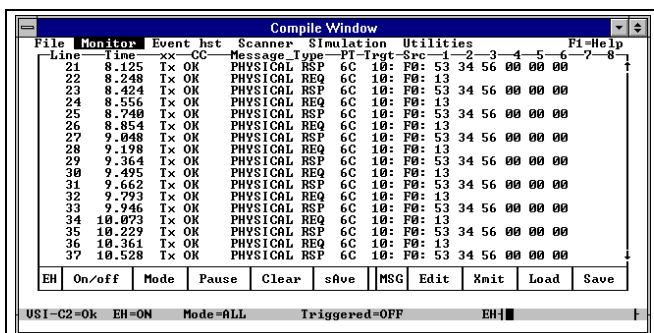
- ◆ Two types: general (transmission at periodic intervals), and programmed (transmission via a user-defined program)

MESSAGE RESPONDER

- ◆ Transmit responses to received messages

NODE SIMULATOR

- ◆ General message scheduler and message responder combined



VLT software

VSI-DLL

- ♦ Industry-standard API - Winsock 2
- ♦ Windows Open Service Architecture (WOSA)
- ♦ Windows NT and Windows 95 support
- ♦ Timestamping control
- ♦ RS-232 data rate control
- ♦ Message loopback control

Ordering Information:

Part Number: DG-VSI/C2 (Vehicle Link Tester - C2)

Deliverables

VSI-C2 hardware
RS-232 cable
Vehicle cables
VLT-2 software

Hardware Requirements:

12VDC power supply
PC with 8MB RAM (16MB Recommended)

Other Products of Interest:

DG-JNAT-x ❖ J1850 Network Analysis Tool (JNAT)
provides a windows-like interface to assist engineers
in troubleshooting physical bus timing of J1850
networks.
DG-VSI-DLL ❖ DLL for VSI



VSI hardware

Dearborn Group, Inc., specializes in technology for in-vehicle and automation networks. We provide hardware and software products, test equipment, consulting, and various training seminars.



27007 Hills Tech Court
Farmington Hills, MI 48331-5723
(248) 488-2080
(800) 278-1850 (in Michigan)
FAX: (248) 488-2082
<http://www.dgtech.com>

