

VSI-2534 Validation Utility User Guide

Version 1.0

July, 2011

Foreword

This document describes DG Technologies VSI-2534 Validation Utility and its use(s). The VSI-2534 Validation Utility is used to verify the proper connection and communication of a SAE J2534 Pass-Thru device from the PC to the VSI-2534 and the VSI-2534 to the vehicle or ECU. Upon successful communication, the VSI-2534 Validation Utility will also identify the protocol being utilized on the vehicle or ECU.

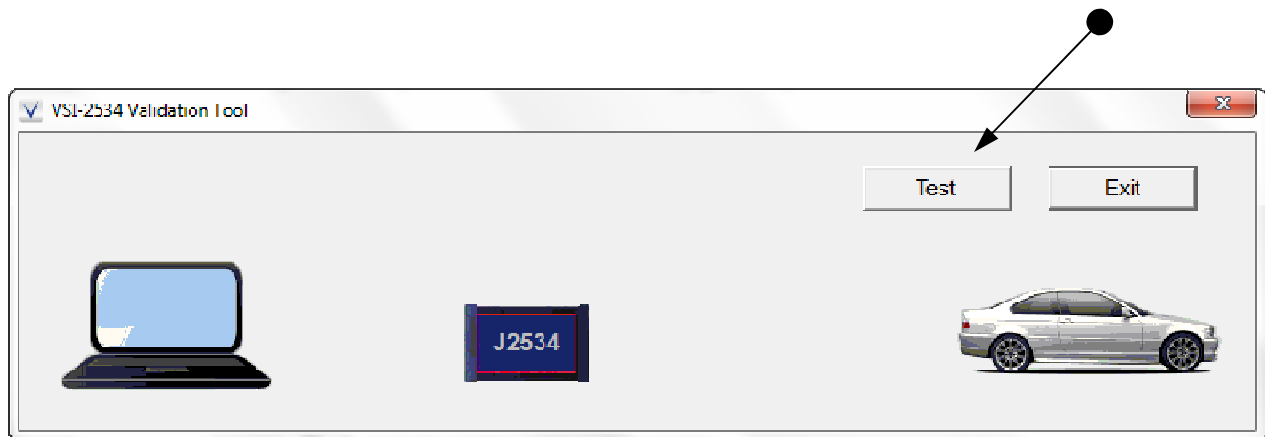
Table of Contents

- Using the VSI-2534 Validation Utility (pg. 2)
- Possible Errors and Troubleshooting Tips: (pg. 3)

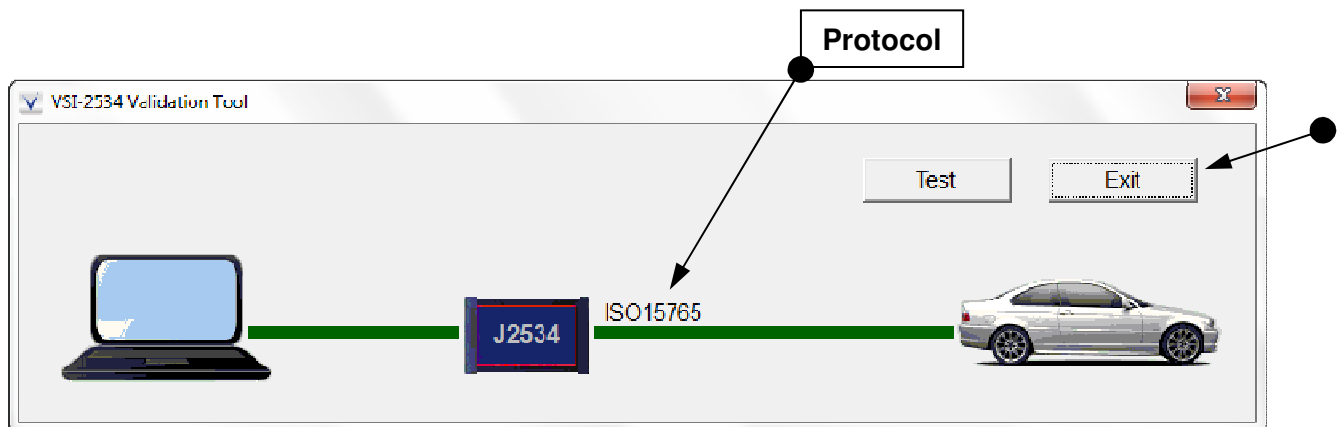
© 2006 - 2011 Dearborn Group, Inc.
33604 West Eight Mile Road
Farmington Hills, MI 48335
Phone (248) 888-2000 • Fax (248) 888-9977

This document is copyrighted by Dearborn Group, Inc. Permission is granted to copy all and/or entire page portions of this manual, provided such copies are for use with the product provided by DG Technologies (Dearborn Group, Inc.) or any of its affiliates, and that each instance of DG Technologies, Dearborn Group, Inc., and our website www.dgtech.com remains on all copies as on the original.

Using the VSI-2534 Validation Utility: (pg. 2)

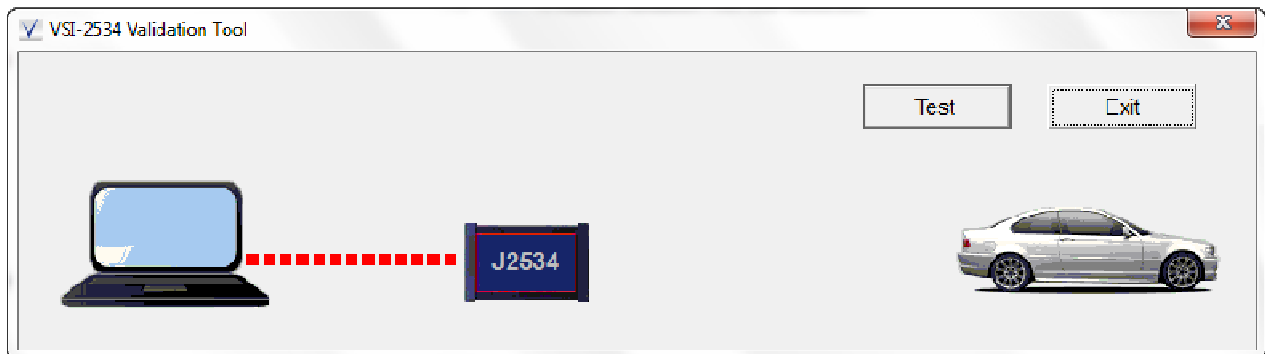


- Locate and click on the VSI Validation Utility by finding and executing the software application. Example: Start>Programs>VSI-2534>VSI Validation Utility.
- Ensure proper connections of VSI-2534 to vehicle and PC.
- Turn ignition key to “On” and click on “Test”.

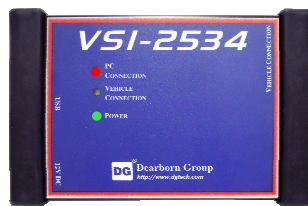


- This is a Pass/Fail test. Upon completion of a successful test, you will see the screen above. The two green lines indicate that communication from the J2534 device and the PC was successful as well as the communication from the J2534 device and the vehicle was successful. Vehicle protocol that was detected is also displayed.
- Click on “Exit” when done.

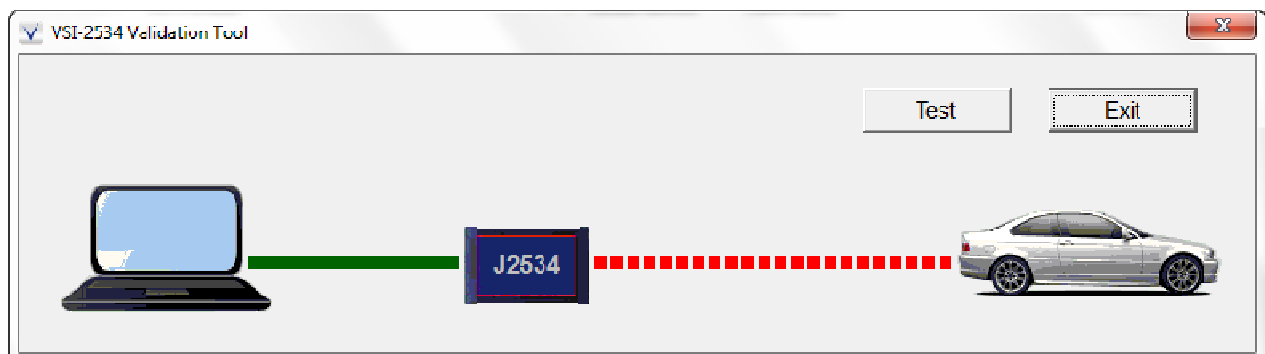
Possible Errors and Troubleshooting Tips: (pg. 3)



- This screen indicates a communication problem between the J2534 device and the PC.
 - Ensure both connections at each end of USB cable, between the J2534 device and the PC, are secure.
 - Ensure J2534 device was properly installed on PC and possibly re-install.



- Ensure the J2534 device is powered with red & green light illuminated.
- If problem persists, try a different USB cable.



- This screen indicates a communication problem between the J2534 device and the PC.
 - Ensure both connections at each end of the OBDII cable between the J2534 device and the vehicle are secure.
 - Ensure vehicle ignition key is “On” and that J2534 device is powered up.
 - If problem persists, ensure the J1962 and other vehicle wiring is connected correctly and securely.

This document is copyrighted by Dearborn Group, Inc. Permission is granted to copy all and/or entire page portions of this manual, provided such copies are for use with the product provided by DG Technologies (Dearborn Group, Inc.) or any of its affiliates, and that each instance of DG Technologies, Dearborn Group, Inc., and our website www.dgtech.com remains on all copies as on the original.