

# Gryphon G2



**DG TECHNOLOGIES**  
Vehicle Network Solutions



Gryphon G2 is a proven platform for vehicle network design and development activities including EOL testing, ECU prototyping, data logging, bus analysis, simulation, validation and more

## Differentiation

**A flexible network development device with simultaneous access to multiple interchangeable protocol cards**

## Key Features

### Hardware

- 3 Protocol Card Expansion Slots
- Data Logging & Network Gateway
- Linux Operating System 
- Wi-Fi Enabled 
- Remote Access to Built-in Web Server
- 1 GB Ethernet Connection
- 3 USB Ports
- LCD Graphic Display
- Field Upgradable Firmware
- On-board Media Storage
- Power Adapter or Vehicle-powered

## Benefits

- Simultaneous support of multiple protocols (e.g. 3 CAN, SW CAN, Dual LIN and CAN FD)
- High end analyzer on a proven platform
- Hardware simulation & software validation
- Extensive data logging capability
- Diagnostic and reprogramming capability
- ECU development
- Embedded application support
- Multiple PC based applications interface with the G2 simultaneously

### PC Software

- Hercules (Analysis Software)
- Gryphon Logger Config (Data Logger Software)
- J2534 & RP1210 API Compatible
- Compatible with Busmaster, Matlab, LabView and more



## Technical Specs

Physical: 2.5" x 5.7" x 6.25", -10 to 80° C

Electrical: 8-32 VDC, (14.5 VDC Nominal) 800mA max

## Expansion Cards

- Single Channel CAN FD
- Quad CAN (4 HS Channels)
- GM Quad CAN (1 SW & 3 HS Channels)
- Dual CAN (2 HS Channels)
- Single Wire CAN (2 Channels)
- Dual LIN (2 Channels)
- J1708 (2 Channels)
- I/O Card

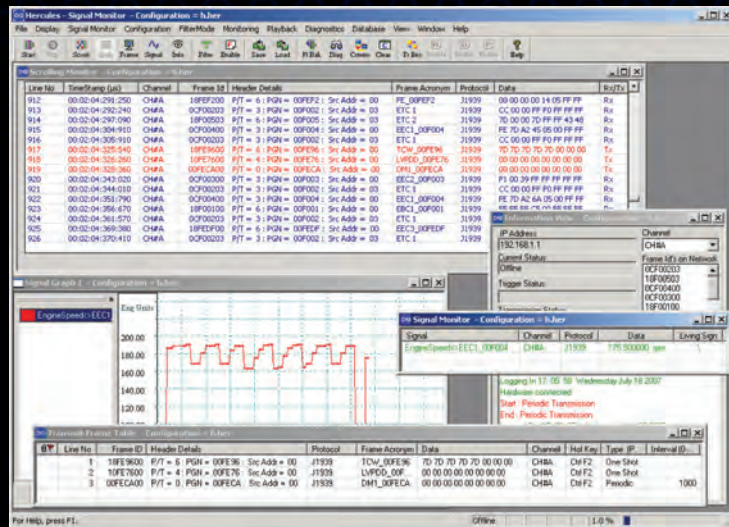


# Hercules Software

World-class monitoring software included with the Gryphon G2, enabling in-vehicle network development.

## Capabilities

ECU Development, Data Collection & Analysis, Hardware Simulation, LIN Emulation and Testing



## Features

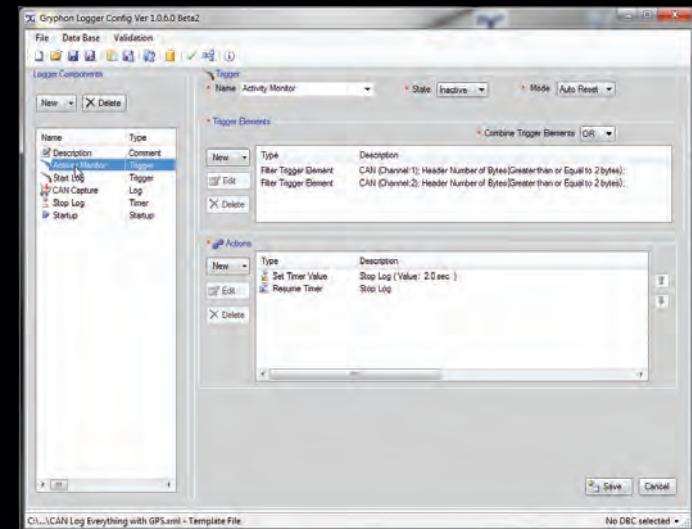
- Easy to use, intuitive menu structure
- Supports OBDII and ISO diagnostic services
- Supports a wide variety of vehicle protocols
- View, store and create messages quickly
- Record and playback data (timestamp enabled)
- Filter/Trigger based on messages or signals
- Real-time signal graphing
- Send single and broadcast messages (Hot-key enabled)
- Data Monitoring
  - Scrolling monitor displays messages with timestamps
  - Signal monitor displays signals with engineering values
  - InPlace monitor displays color coded message activity
- Frame Responder
  - Works in conjunction with triggering to send a message(s) in response to a user specified message being received
- Imports dbc files
- Save/Load XML configurations

# Graphical Gryphon Logger Config

Application assisting Gryphon G2 users in the creation of a configuration file, harnessing the power of the Gryphon G2 for data logging.

## Capabilities

- Graphical user interface
- Data collection and filtering on multiple channels
- Customize with Timers, Counters and Clocks
- Triggers by filter or digital I/O
  - Send Messages • Create Events
- Set master and sub schedules
- Automatically transfer data logs to server
  - Post-processing • Analysis • Backup



## Features

- Quick Start templates for out-of-the-box logging
- Data logger can be also used as a responder or simulator
- Flexible configuration for multi-purpose data collection
- Logs vehicle data and GPS data
- Provides XML and component relation validation
- Supports dbc files
- Assists with efficient data transfer between the PC and Gryphon