

Chrysler Reprogramming User Guide

Version 2.0

June 2014

Foreword

This document describes DG Technologies VSI-2534, a SAE J2534 Pass-Thru device, with its primary purpose to program automotive ECUs (Electronic Control Units). It provides module programming for development, end-of-line testing and re-programming. This document shows the general procedures for purchasing, installing and using the OEM programming application with the VSI-2534 Pass-Thru device. Because the procedures are generic in nature, this may not capture every screen or every scenario for each and every vehicle. For any screen, read the directions on the screen and proceed as indicated. Programming is vehicle specific and directions may vary. All documentation is subject to change at any time. Any and all OEM documentation should be read in its entirety along with the vehicle Service Manual prior to programming.

The VSI-2534 is also useful for vehicle diagnostics, development, general design, and hardware in-the-loop simulation and anywhere communications with a vehicle network are required.

Table of Contents

- Registration, Subscription & Application Installation (pg. 2-9)
- Chrysler Reprogramming (pg. 10-21)
 - 2009 and earlier vehicles (pg. 10-16)
 - 2010 and later vehicles (pg. 16-21)

© 2006 - 2014 Dearborn Group, Inc.
33604 West Eight Mile Road
Farmington Hills, MI 48335
Phone (248) 888-2000 • Fax (248) 888-9977

This document is copyrighted by Dearborn Group, Inc. Permission is granted to copy all and/or entire page portions of this manual, provided such copies are for use with the product provided by DG Technologies (Dearborn Group, Inc.) or any of its affiliates, and that each instance of DG Technologies, Dearborn Group, Inc., and our website www.dgtech.com remains on all copies as on the original.

Registration, Subscription & Application Installation (pg. 2-8)



- From Internet Explorer, go to: www.techauthority.com and select “Register”.



- Fill in required information and then “Create Account”. Follow remaining prompts to complete. An email will be sent to the address provided confirming account setup.



- Click “Next”.



- Return to www.techauthority.com and click on “Start Now”.



- Select from one of the many options and click on “Cart”.



- Click on “Checkout”.



- Fill in required information and click on “Next”. The following screens are typical of an on-line purchase. Follow additional instructions on-line.



- Return to www.techauthority.com and click “Sign-in”.



- Enter “Email” and “Password” and click “Login”.



- Click on “Start Now”.

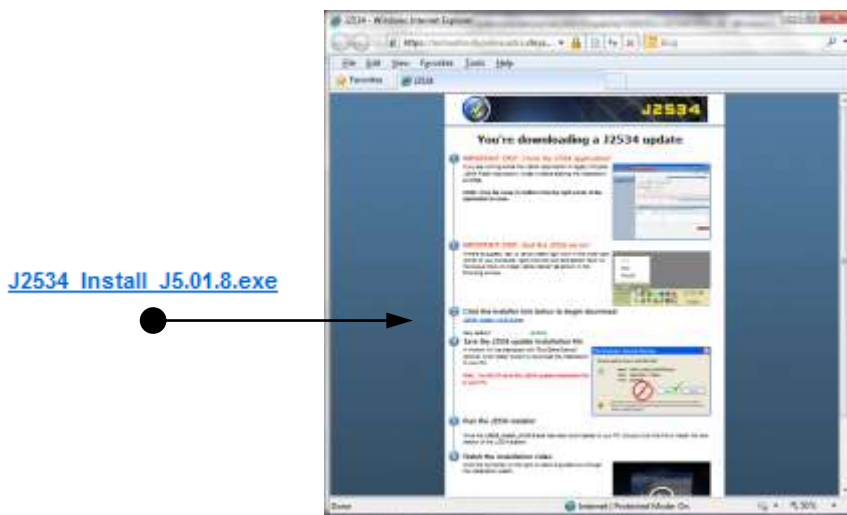


- [J2534 Flash Application/Process](#)

- Click on “J2534 Flash Application/Process”.



- Scroll through and read page in its entirety for important information. Click on “J2534 system”.



- Scroll through and read page in its entirety for this important information, including the video. Click on the installer link to begin the download. (version may be different than shown)

This document is copyrighted by Dearborn Group, Inc. Permission is granted to copy all and/or entire page portions of this manual, provided such copies are for use with the product provided by DG Technologies (Dearborn Group, Inc.) or any of its affiliates, and that each instance of DG Technologies, Dearborn Group, Inc., and our website www.dgtech.com remains on all copies as on the original.



- Click on “Save”.



- Save to “Desktop”



- Saving file to “Desktop”.



- Locate Icon on Desktop and double-click on it.



- Click on “Next”.

This document is copyrighted by Dearborn Group, Inc. Permission is granted to copy all and/or entire page portions of this manual, provided such copies are for use with the product provided by DG Technologies (Dearborn Group, Inc.) or any of its affiliates, and that each instance of DG Technologies, Dearborn Group, Inc., and our website www.dgtech.com remains on all copies as on the original.



- Follow on-screen instructions and click on “Next”.



- Click on “I accept...” and then “Next”.



- Click on “Install”.



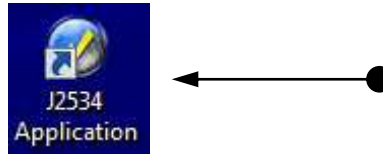
- Installing...

This document is copyrighted by Dearborn Group, Inc. Permission is granted to copy all and/or entire page portions of this manual, provided such copies are for use with the product provided by DG Technologies (Dearborn Group, Inc.) or any of its affiliates, and that each instance of DG Technologies, Dearborn Group, Inc., and our website www.dgtech.com remains on all copies as on the original.

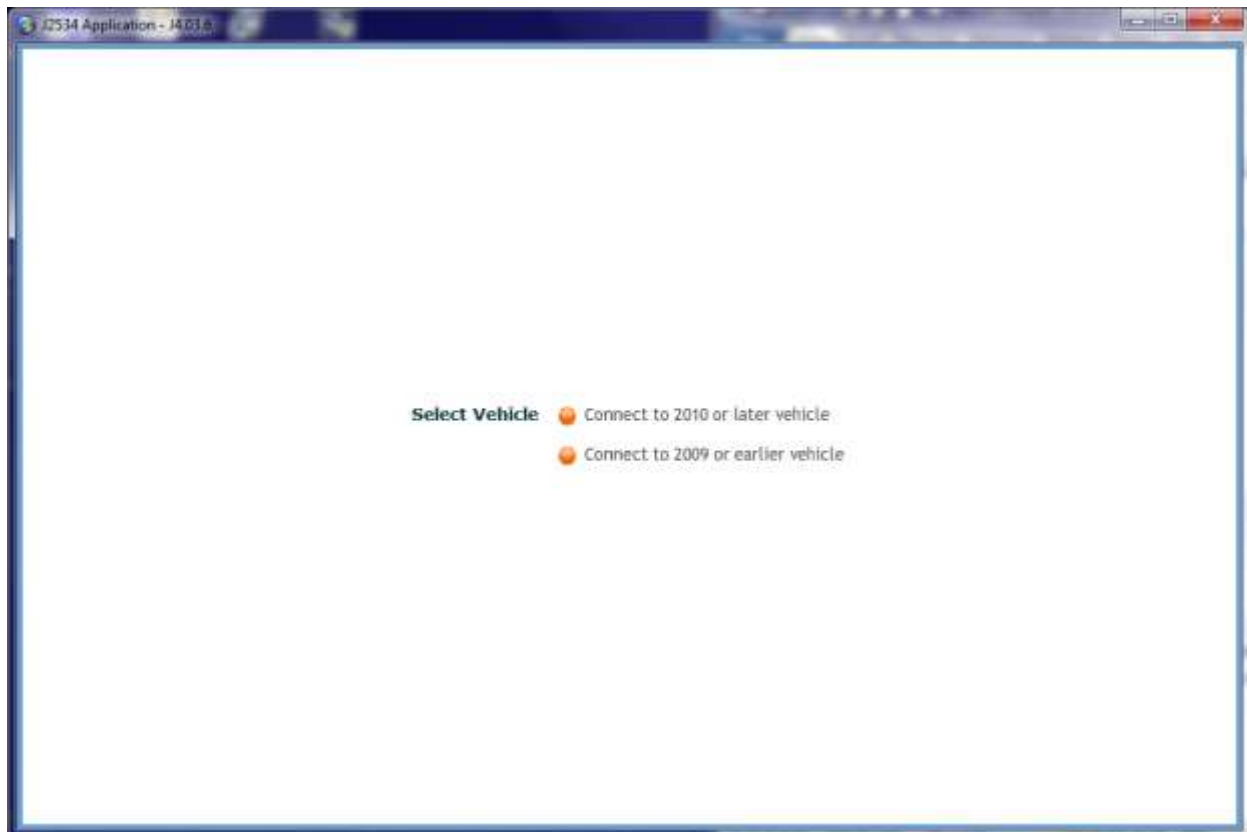


- Click on “Finish”.

Chrysler Reprogramming (pg. 10-21)



- Locate Chrysler “J2534 Application” icon on the desktop and double-click on it.



- **IMPORTANT NOTE:** This is where the process will take one of two paths. **READ CAREFULLY.**
 - **2010 or later vehicle, proceed to page 15** and follow the process shown.
 - **2009 or earlier vehicle: Minimize this window shown. The applicable calibration files need to be downloaded from the www.techauthority.com website before proceeding.** After minimizing this window shown, this “icon” will appear in the taskbar and will be referenced later after downloading the calibration files:



2009 or earlier vehicle...



- Return to www.techauthority.com and click "Sign-in".



- Enter "Email" and "Password" and click "Login".

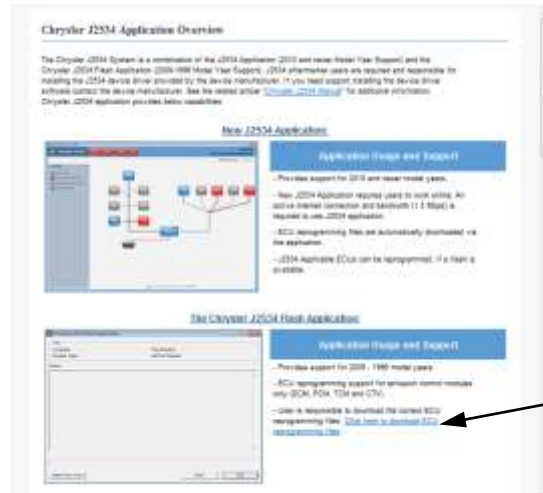


- Click on "Start Now".

- [J2534 Flash Application/Process](#)



- Click on “J2534 Flash Application/Process”.

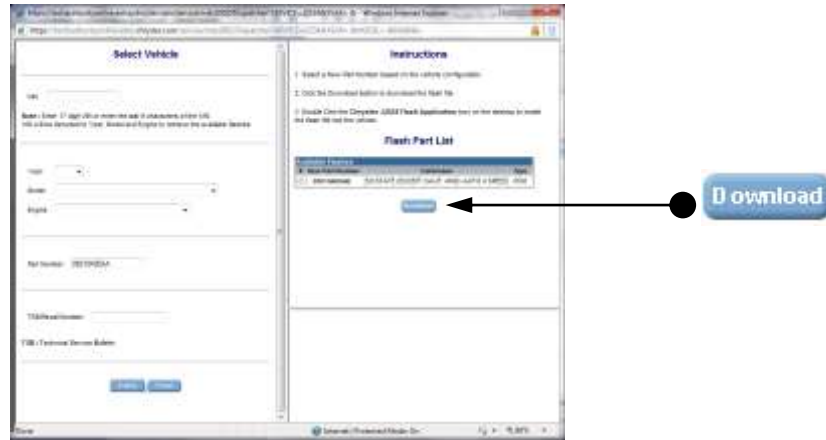


reprogramming files. [Click here to download ECU reprogramming files.](#)

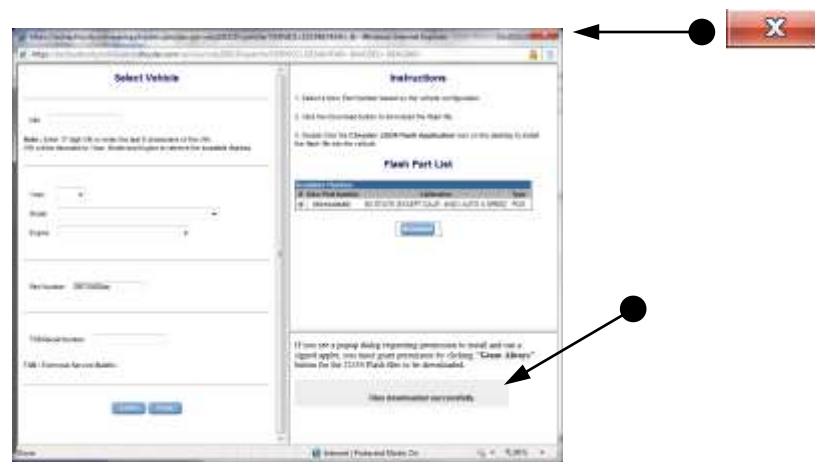
- “Click here to download ECU reprogramming files”.



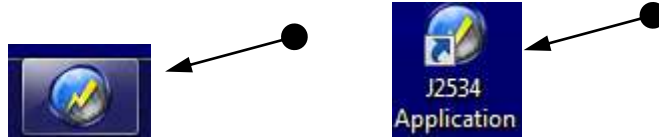
- Identify the vehicle being programmed using one of the available options and click on “Submit”.
Note: Using the “Part Number” is the best option as it will provide you the only matching update.



- If an available upgrade is available, it will appear. Select radio button and then click on "Download". (If more than one option is available, just select the applicable radio button.)



- Files have been successfully downloaded onto the PC. Close this window by clicking on the "X".



- Locate this icon in the taskbar OR this icon on the desktop and click on it.



Connect to 2009 or earlier vehicle

- Click on “Connect to 2009 or earlier vehicle”.

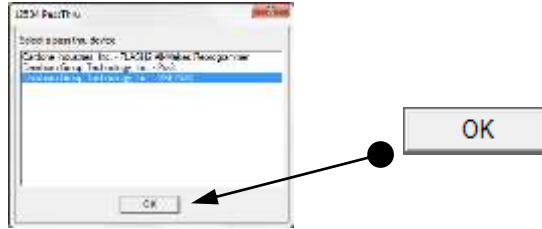


Start Legacy Application

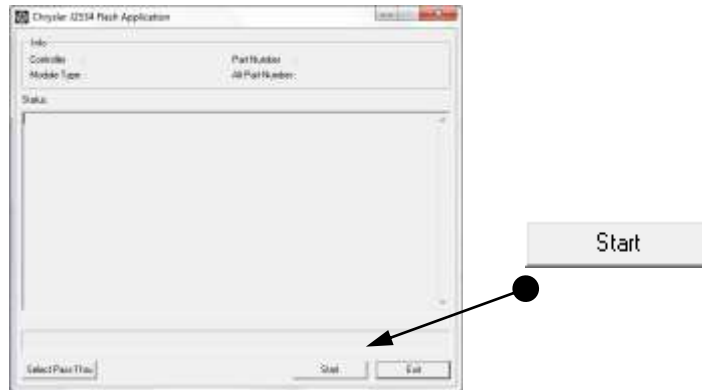
- Click on “Start Legacy Application”.



- Click “Select Pass-Thru”.



- Select "Dearborn Group Technology" and click "OK".

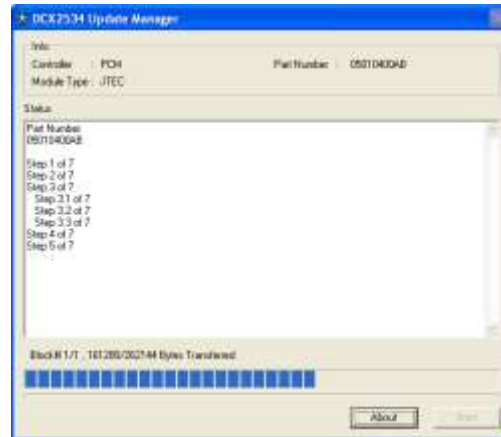


- Make sure the vehicle's Ignition Switch is in the "On" position and then click on the "Start" button. Respond accordingly to the various prompts, such as these shown below.

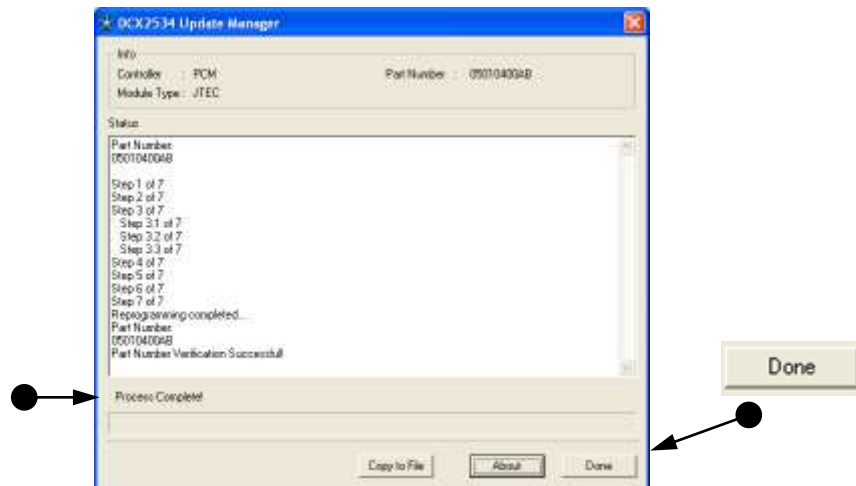


- Click on "Yes".





- Calibration files being loaded into the ECM! When done, respond to the various prompts, such as these shown below.



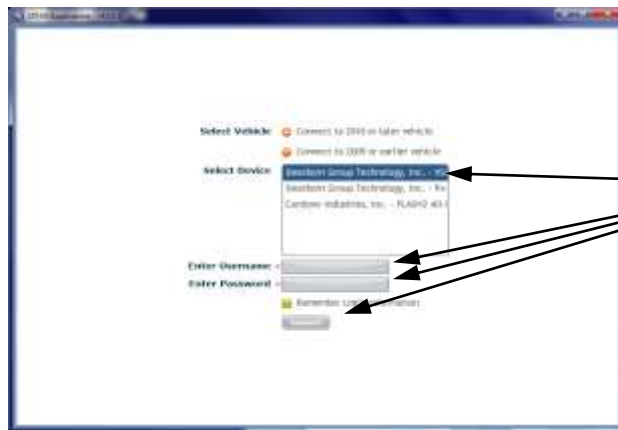
- “Part Number Verification Successful! / Process Complete”. Click on “Done” and disconnect tool from vehicle.

2010 or later vehicle...



● Connect to 2010 or later vehicle

- Click on “Connect to 2010 or later vehicle”.



Dearborn Group Technology, Inc. - VSI

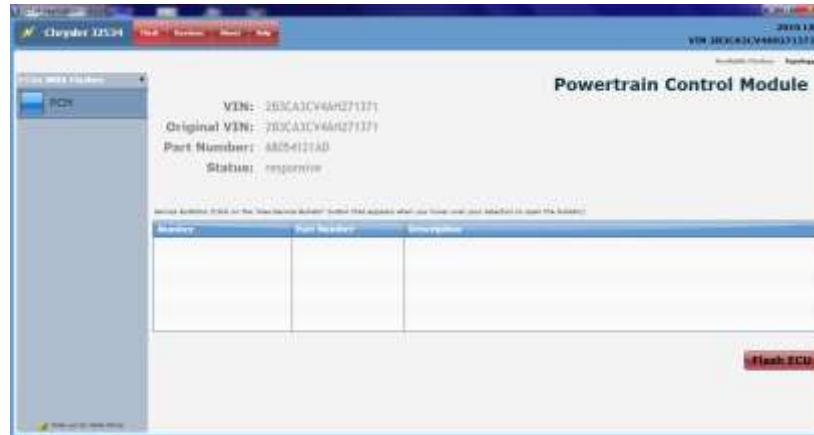
Connect

- “Select Device”, “Enter Username”, “Enter Password” and click on “Connect”.

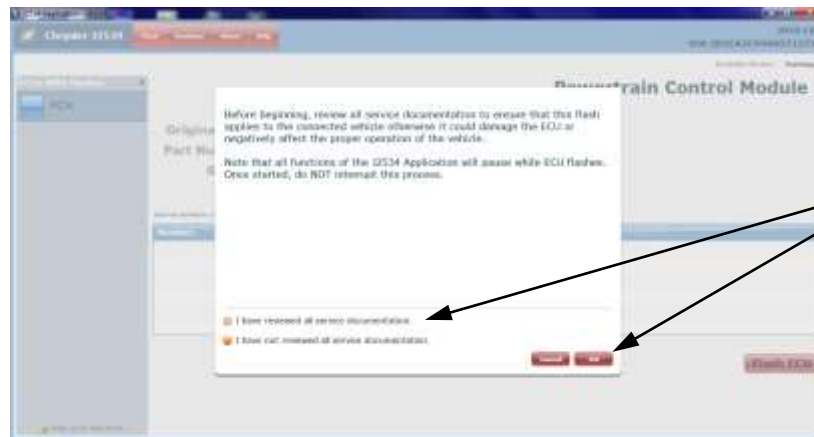


- ECU's shown in the left-hand pane have updates available. Select applicable ECU.

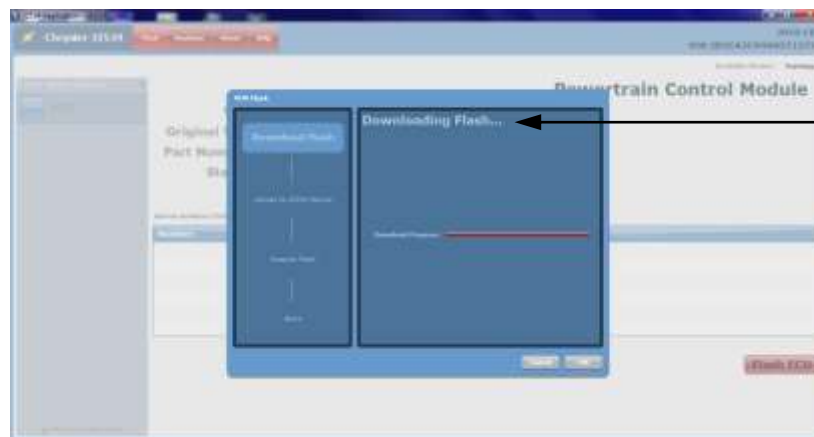
This document is copyrighted by Dearborn Group, Inc. Permission is granted to copy all and/or entire page portions of this manual, provided such copies are for use with the product provided by DG Technologies (Dearborn Group, Inc.) or any of its affiliates, and that each instance of DG Technologies, Dearborn Group, Inc., and our website www.dgtech.com remains on all copies as on the original.



- In this case, a Service Bulletin was not available, but an update was still available. Click on "Flash ECU".



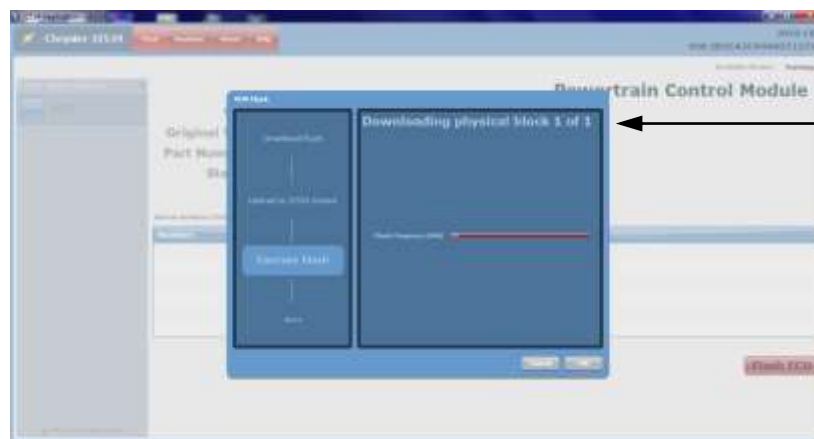
- Read important screen, make appropriate selection and click on "OK".



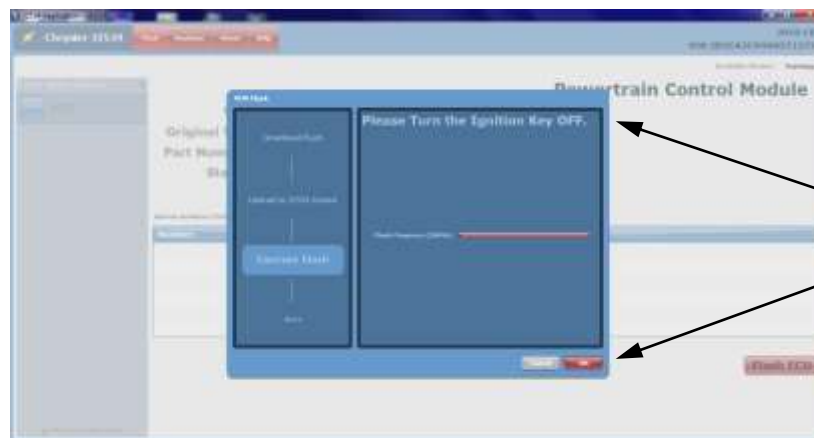
- "Downloading Flash"...



- “Starting CHRYSLER flash process”...



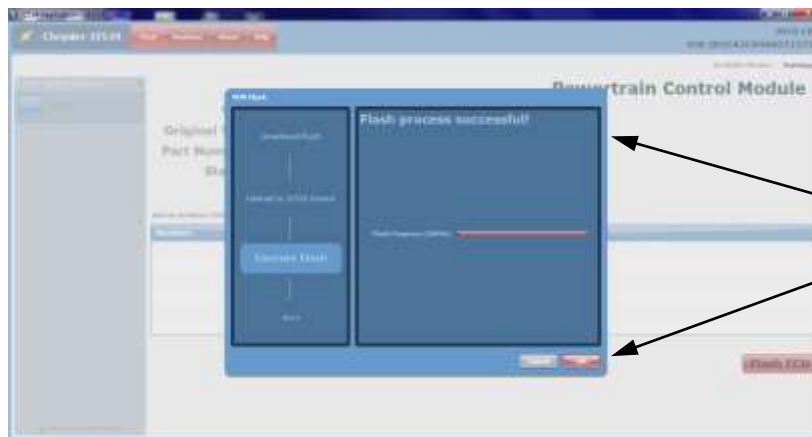
- “Downloading physical block...”



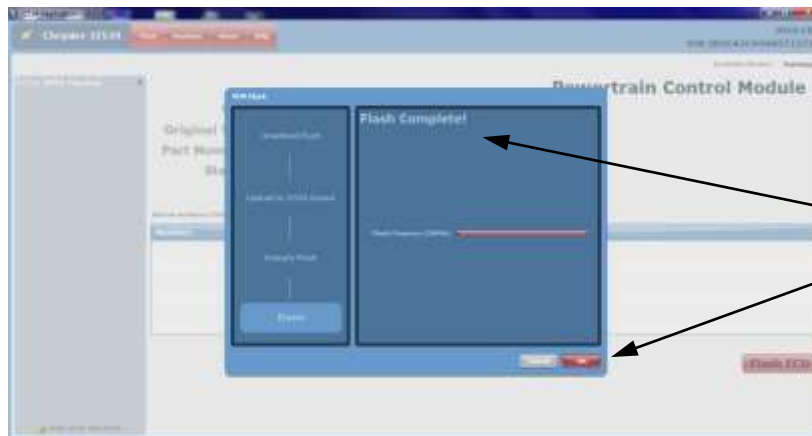
- Please Turn the Ignition Key OFF and click “OK”.



- “Please Turn the Ignition Key ON” and click “OK”.



- “Flash process successful!” Click “OK”.



- “Flash Complete!” Click “OK”.





- Close window by selecting the “X”.