

Honda

Reprogramming User Guide

Version 1.0

April, 2011

Foreword

This document describes DG Technologies VSI-2534, a SAE J2534 Pass-Thru device, with its primary purpose to program automotive ECUs (Electronic Control Units). It provides module programming for development, end-of-line testing and re-programming. This document shows the general procedures for purchasing, installing and using the OEM programming application with the VSI-2534 Pass-Thru device. Because the procedures are generic in nature, this may not capture every screen or every scenario for each and every vehicle. For any screen, read the directions on the screen and proceed as indicated. Programming is vehicle specific and directions may vary. All documentation is subject to change at any time. Any and all OEM documentation should be read in its entirety along with the vehicle Service Manual prior to programming.

The VSI-2534 is also useful for vehicle diagnostics, development, general design, hardware in-the-loop simulation and anywhere communications with a vehicle network are required.

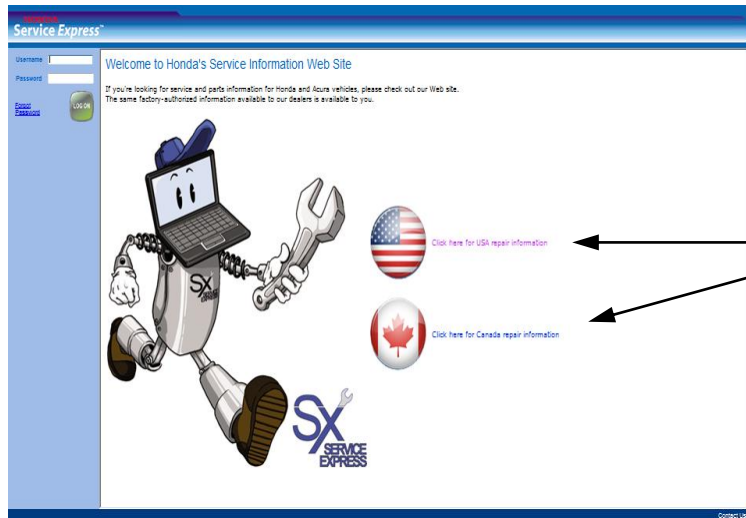
Table of Contents

- Subscription & Software Download and Installation (pg. 2-15)
- Honda Reprogramming (pg. 16-19)

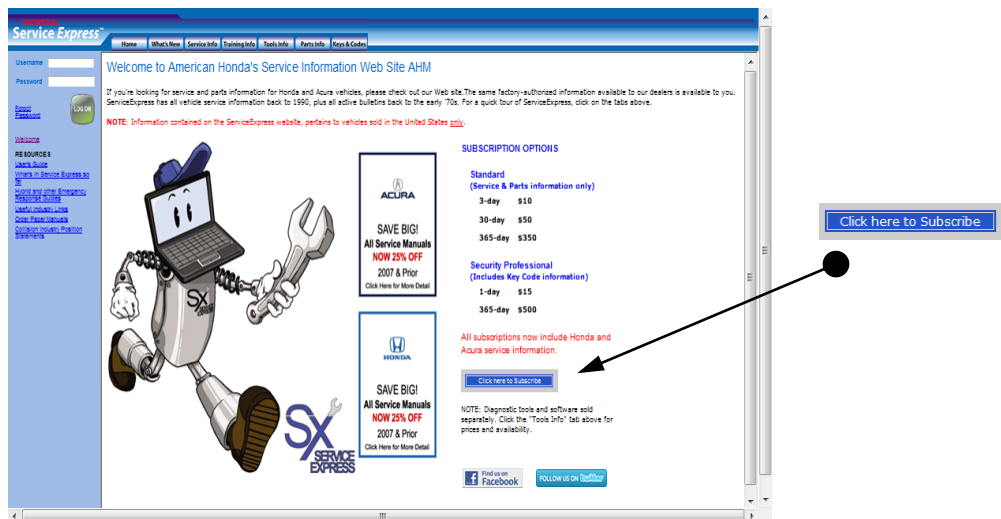
© 2006 - 2011 Dearborn Group, Inc.
33604 West Eight Mile Road
Farmington Hills, MI 48335
Phone (248) 888-2000 • Fax (248) 888-9977

This document is copyrighted by Dearborn Group, Inc. Permission is granted to copy all and/or entire page portions of this manual, provided such copies are for use with the product provided by DG Technologies (Dearborn Group, Inc.) or any of its affiliates, and that each instance of DG Technologies, Dearborn Group, Inc., and our website www.dgtech.com remains on all copies as on the original.

Subscription & Software Download and Installation (pg. 2-15)



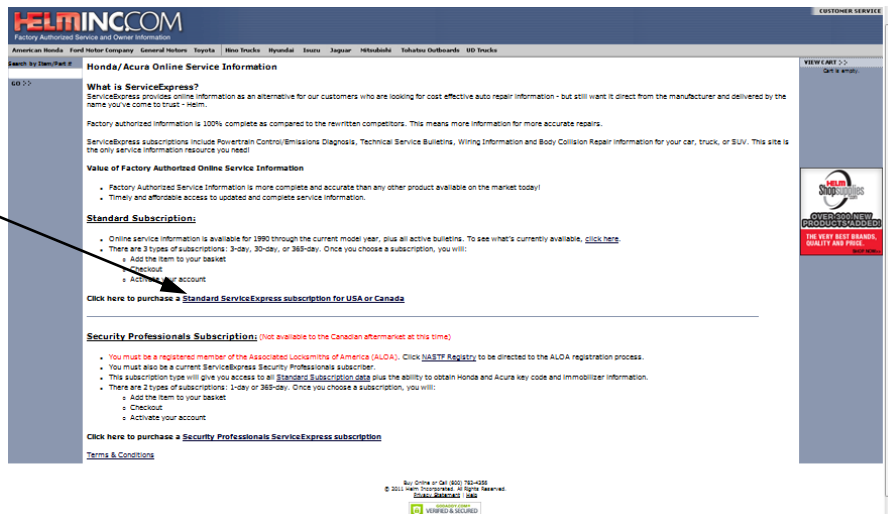
- Go to <https://techinfo.honda.com> and click applicable selection. (documentation hereafter is for USA)



- Click on "Click here to Subscribe" to Service Express.

This document is copyrighted by Dearborn Group, Inc. Permission is granted to copy all and/or entire page portions of this manual, provided such copies are for use with the product provided by DG Technologies (Dearborn Group, Inc.) or any of its affiliates, and that each instance of DG Technologies, Dearborn Group, Inc., and our website www.dgtech.com remains on all copies as on the original.

Standard ServiceExpress subscription for USA or Canada



- Click where shown.

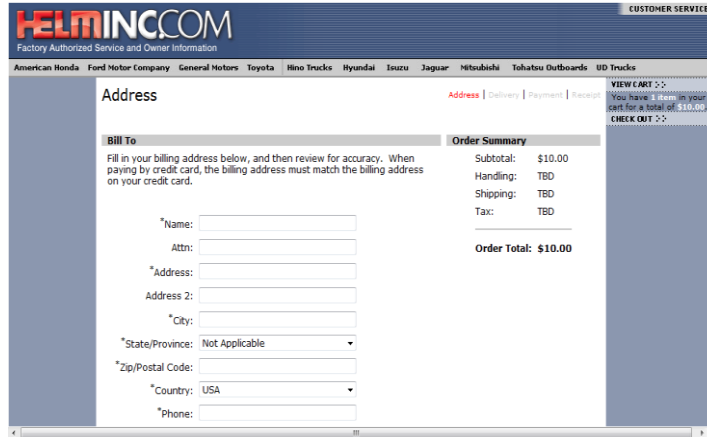


- Select "Qty" option and click "Add to Cart".

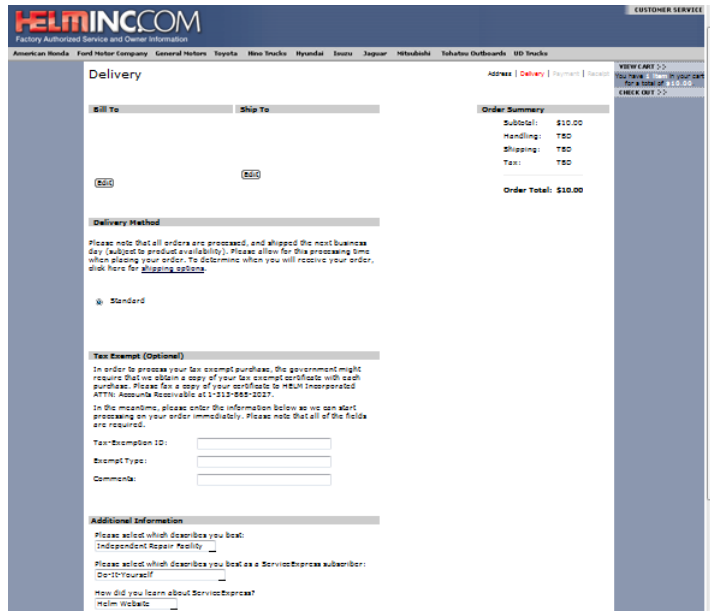


This document is copyrighted by Dearborn Group, Inc. Permission is granted to copy all and/or entire page portions of this manual, provided such copies are for use with the product provided by DG Technologies (Dearborn Group, Inc.) or any of its affiliates, and that each instance of DG Technologies, Dearborn Group, Inc., and our website www.dgtech.com remains on all copies as on the original.

- If satisfied, click on “Check Out”.

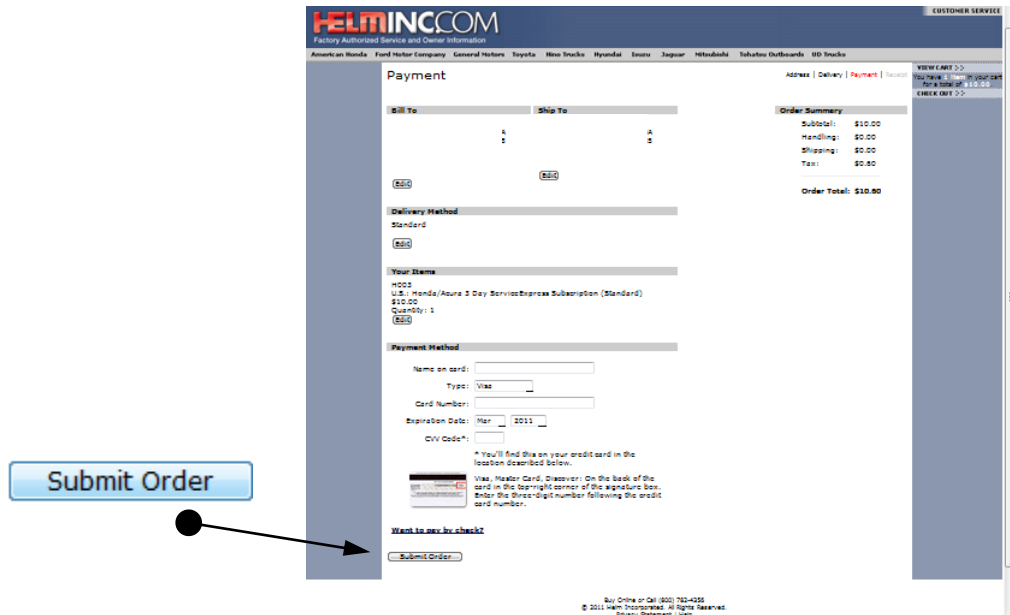


- Fill out applicable information, scroll to the bottom and click on “Continue”




- Fill out applicable information, scroll to the bottom and click on “Continue”.

This document is copyrighted by Dearborn Group, Inc. Permission is granted to copy all and/or entire page portions of this manual, provided such copies are for use with the product provided by DG Technologies (Dearborn Group, Inc.) or any of its affiliates, and that each instance of DG Technologies, Dearborn Group, Inc., and our website www.dgtech.com remains on all copies as on the original.



Submit Order

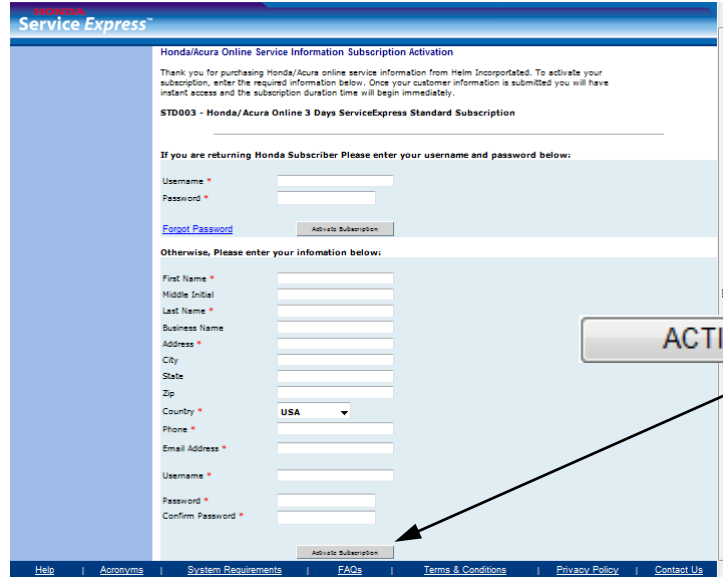
- Fill out applicable information and click on “Submit Order”.



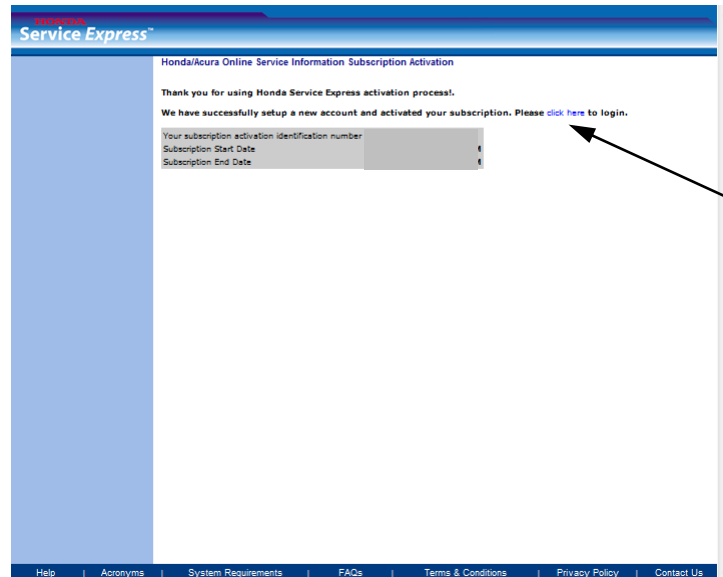
ACTIVATE SUBSCRIPTION

- Click on “Activate Subscription”.

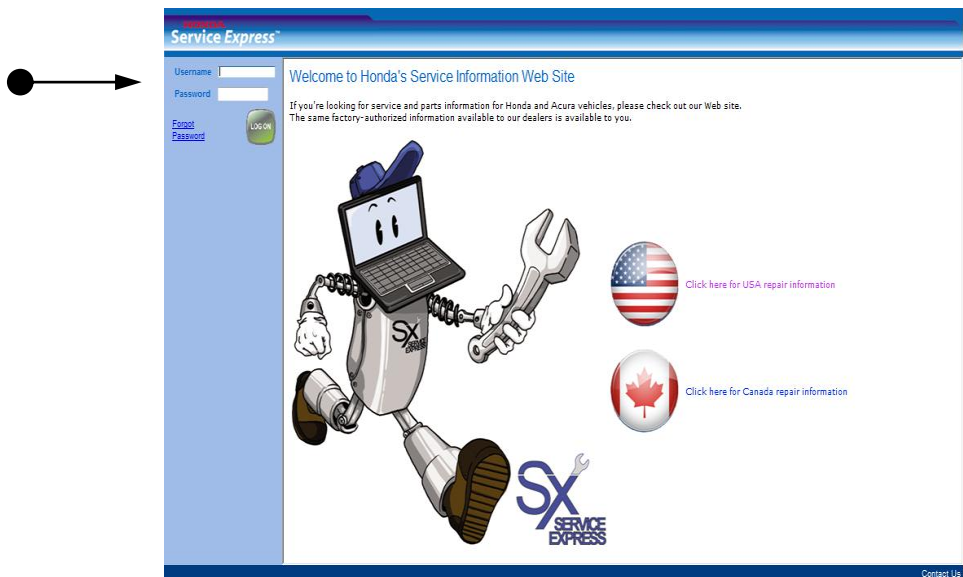
This document is copyrighted by Dearborn Group, Inc. Permission is granted to copy all and/or entire page portions of this manual, provided such copies are for use with the product provided by DG Technologies (Dearborn Group, Inc.) or any of its affiliates, and that each instance of DG Technologies, Dearborn Group, Inc., and our website www.dgtech.com remains on all copies as on the original.



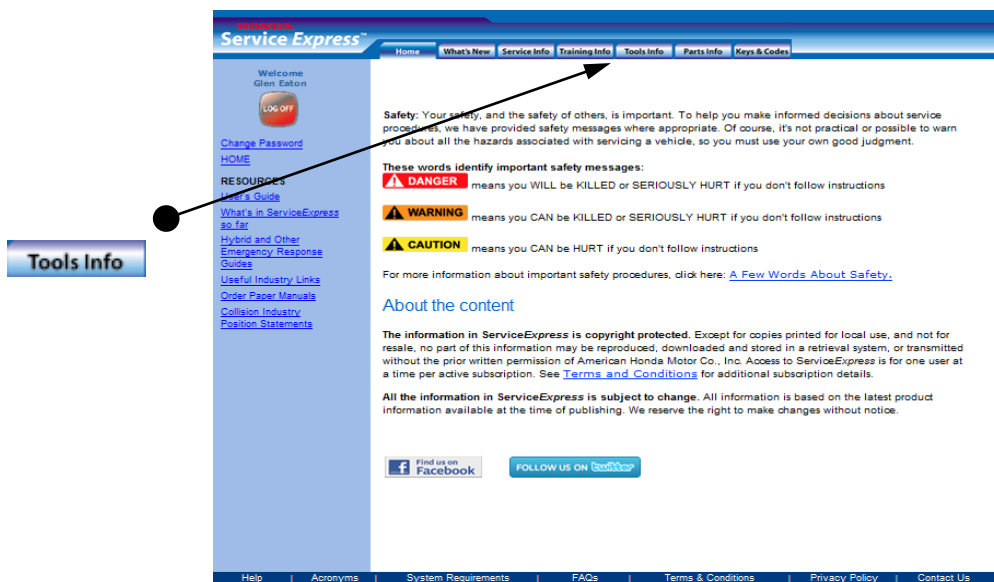
- Fill out information as applicable and click on “Activate Subscription”. Remember your “Username” and “Password”.



- “Click here” to begin...

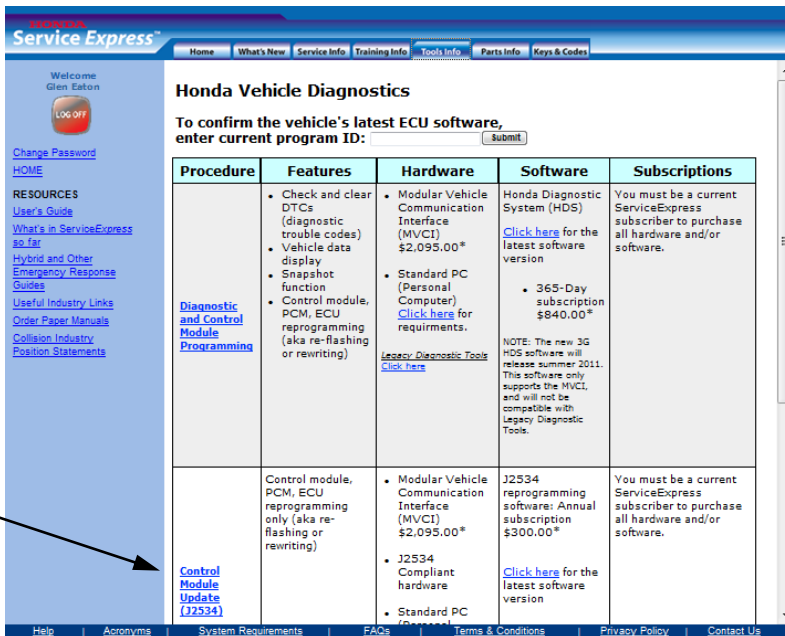


- Return to home page and log in using your “Username” and “Password”.



- Read documentation carefully. Click on the “Tools Info” tab.

This document is copyrighted by Dearborn Group, Inc. Permission is granted to copy all and/or entire page portions of this manual, provided such copies are for use with the product provided by DG Technologies (Dearborn Group, Inc.) or any of its affiliates, and that each instance of DG Technologies, Dearborn Group, Inc., and our website www.dgtech.com remains on all copies as on the original.



Welcome
Glen Eaton

[LOG OFF](#)

[Change Password](#)

[HOME](#)

RESOURCES

[User's Guide](#)

[What's in ServiceExpress go far](#)

[Hybrid and Other Emergency Response Guides](#)

[Useful Industry Links](#)

[Order Paper Manuals](#)

[Collision Industry Position Statements](#)

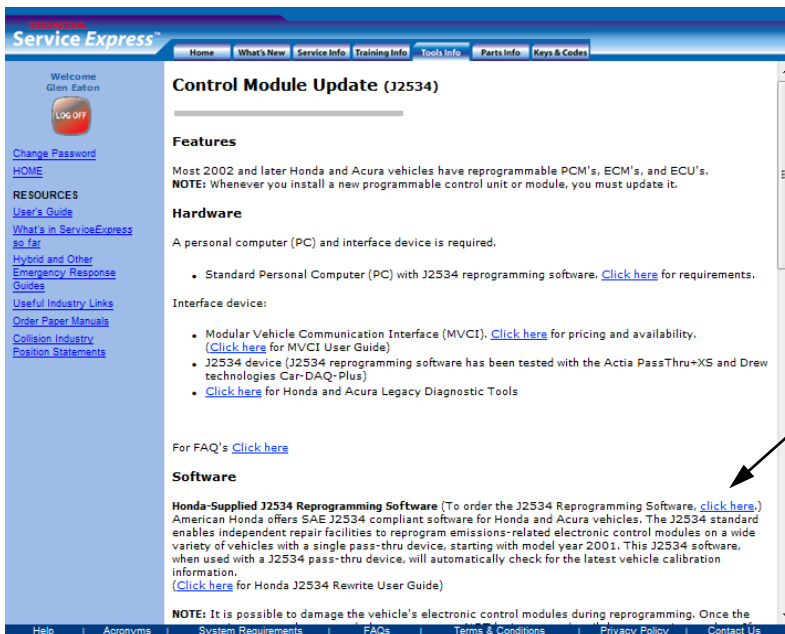
Honda Vehicle Diagnostics

To confirm the vehicle's latest ECU software, enter current program ID: [Submit](#)

Procedure	Features	Hardware	Software	Subscriptions
Diagnostic and Control Module Programming	<ul style="list-style-type: none"> Check and clear DTCs (diagnostic trouble codes) Vehicle data display Snapshot function Control module, PCM, ECU reprogramming (aka re-flashing or rewriting) 	<ul style="list-style-type: none"> Modular Vehicle Communication Interface (MVCI) \$2,095.00* Standard PC (Personal Computer) Click here for requirements. Legacy Diagnostic Tools Click here 	Honda Diagnostic System (HDS) Click here for the latest software version <ul style="list-style-type: none"> 365-Day subscription \$840.00* NOTE: The new 3G HDS software will release summer 2011. This software only supports the MVCI, and will not be compatible with Legacy Diagnostic Tools.	You must be a current ServiceExpress subscriber to purchase all hardware and/or software.
Control Module Update (J2534)	Control module, PCM, ECU reprogramming only (aka re-flashing or rewriting)	<ul style="list-style-type: none"> Modular Vehicle Communication Interface (MVCI) \$2,095.00* J2534 Compliant hardware Standard PC (Personal Computer) Click here for requirements. 	J2534 reprogramming software: Annual subscription \$300.00* Click here for the latest software version	You must be a current ServiceExpress subscriber to purchase all hardware and/or software.

[Help](#) | [Acronyms](#) | [System Requirements](#) | [FAQs](#) | [Terms & Conditions](#) | [Privacy Policy](#) | [Contact Us](#)

- Click on “Control Module Update (J2534)” for reprogramming.



Welcome
Glen Eaton

[LOG OFF](#)

[Change Password](#)

[HOME](#)

RESOURCES

[User's Guide](#)

[What's in ServiceExpress go far](#)

[Hybrid and Other Emergency Response Guides](#)

[Useful Industry Links](#)

[Order Paper Manuals](#)

[Collision Industry Position Statements](#)

Control Module Update (J2534)

Features

Most 2002 and later Honda and Acura vehicles have reprogrammable PCM's, ECM's, and ECU's.
NOTE: Whenever you install a new programmable control unit or module, you must update it.

Hardware

A personal computer (PC) and interface device is required.

- Standard Personal Computer (PC) with J2534 reprogramming software. [Click here](#) for requirements.

Interface device:

- Modular Vehicle Communication Interface (MVCI). [Click here](#) for pricing and availability. ([Click here](#) for MVCI User Guide)
- J2534 device (J2534 reprogramming software has been tested with the Actia PassThru+XS and Drew technologies Car-DAQ-Plus)
- [Click here](#) for Honda and Acura Legacy Diagnostic Tools

For FAQ's [Click here](#)

Software

Honda-Supplied J2534 Reprogramming Software (To order the J2534 Reprogramming Software, [click here](#).) American Honda offers SAE J2534 compliant software for Honda and Acura vehicles. The J2534 standard enables independent repair facilities to reprogram emissions-related electronic control modules on a wide variety of vehicles with a single pass-thru device, starting with model year 2001. This J2534 software, when used with a J2534 pass-thru device, will automatically check for the latest vehicle calibration information. ([Click here](#) for Honda J2534 Rewrite User Guide)

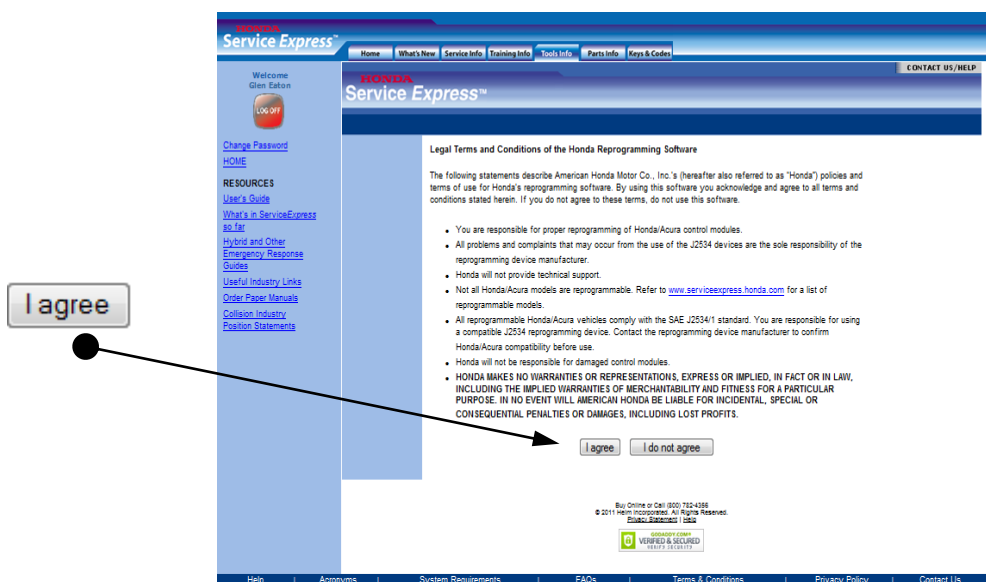
NOTE: It is possible to damage the vehicle's electronic control modules during reprogramming. Once the

[Help](#) | [Acronyms](#) | [System Requirements](#) | [FAQs](#) | [Terms & Conditions](#) | [Privacy Policy](#) | [Contact Us](#)

- Click on “click here” to purchase the “J2534 Reprogramming Software”.

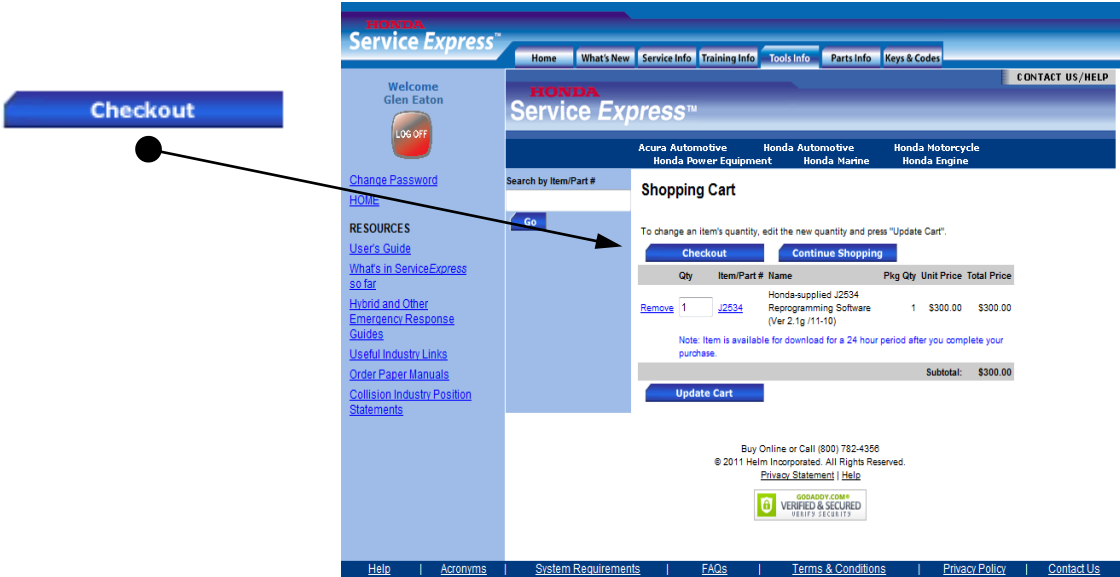


- Select “Qty” and “Honda-supplied J2534” and then, “Add To Cart”.



- Read carefully and click on “I agree”.

This document is copyrighted by Dearborn Group, Inc. Permission is granted to copy all and/or entire page portions of this manual, provided such copies are for use with the product provided by DG Technologies (Dearborn Group, Inc.) or any of its affiliates, and that each instance of DG Technologies, Dearborn Group, Inc., and our website www.dgtech.com remains on all copies as on the original.



Checkout

Welcome Glen Eaton
LOG OFF

[Change Password](#)
[HOME](#)

RESOURCES
[User's Guide](#)
[What's in ServiceExpress so far](#)
[Hybrid and Other Emergency Response Guides](#)
[Useful Industry Links](#)
[Order Paper Manuals](#)
[Collision Industry Position Statements](#)

Search by Item/Part # **Go**

Honda Service Express™

Acura Automotive Honda Power Equipment Honda Automotive Honda Marine Honda Motorcycle Honda Engine

Shopping Cart

To change an item's quantity, edit the new quantity and press "Update Cart".

Checkout **Continue Shopping**

Qty	Item/Part #	Name	Pkg Qty	Unit Price	Total Price
Remove 1	J2534	Honda-supplied J2534 Reprogramming Software (Ver 2.1g /11-10)	1	\$300.00	\$300.00

Note: Item is available for download for a 24 hour period after you complete your purchase.

Subtotal: \$300.00

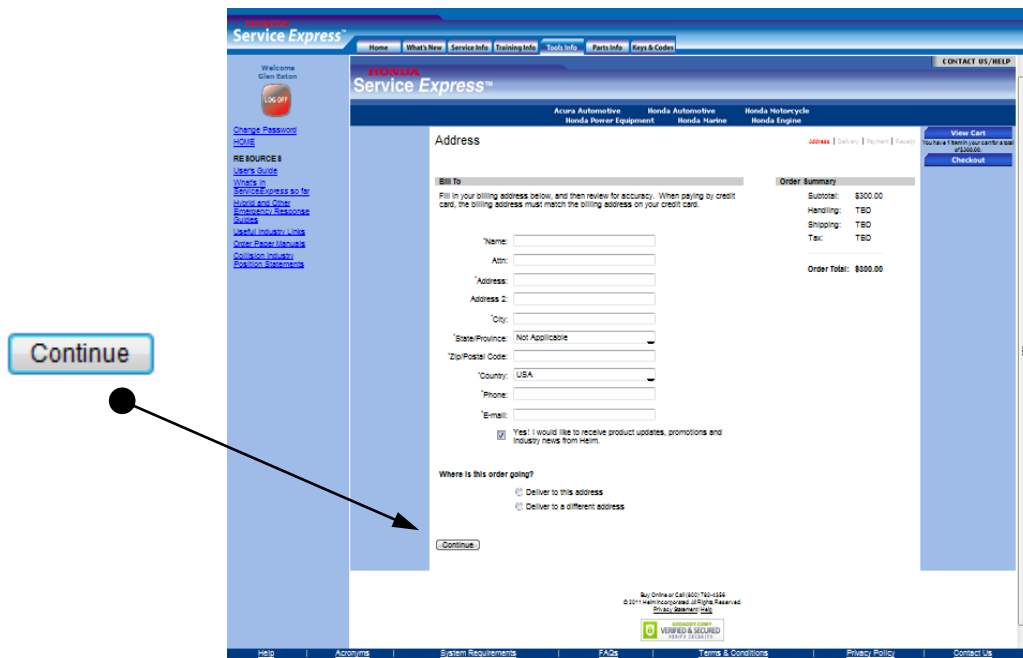
Update Cart

Buy Online or Call (800) 782-4356
 © 2011 Helm Incorporated. All Rights Reserved.
[Privacy Statement](#) | [Help](#)

VERIFIED & SECURED
 VISITORS SECURITY

[Help](#) | [Acronyms](#) | [System Requirements](#) | [FAQs](#) | [Terms & Conditions](#) | [Privacy Policy](#) | [Contact Us](#)

- Click on "Checkout".



Address

Bill To:
 Fill in your billing address below, and then review for accuracy. When paying by credit card, the billing address must match the billing address on your credit card.

Name:
 Attn:
 Address:
 Address 2:
 City:
 State/Province: Not Applicable
 Zip/Postal Code:
 Country: USA
 Phone:
 E-mail:

☒ Yes, I would like to receive product updates, promotions and industry news from Helm.

Where is this order going?
☐ Deliver to this address
☐ Deliver to a different address

Order Summary:
 Subtotal: \$300.00
 Handling: TBD
 Shipping: TBD
 Tax: TBD
Order Total: \$300.00

Continue

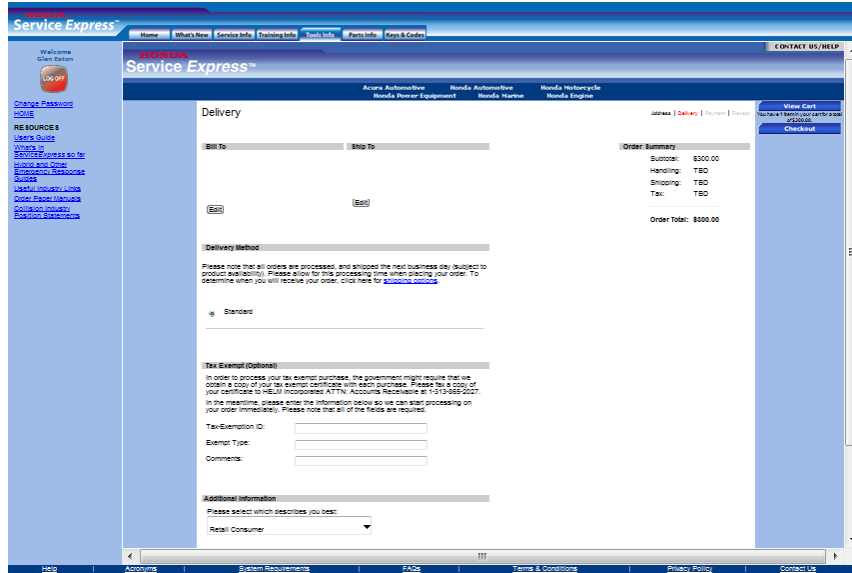
Buy Online or Call (800) 782-4356
 © 2011 Helm Incorporated. All Rights Reserved.
[Privacy Statement](#) | [Help](#)

VERIFIED & SECURED
 VISITORS SECURITY

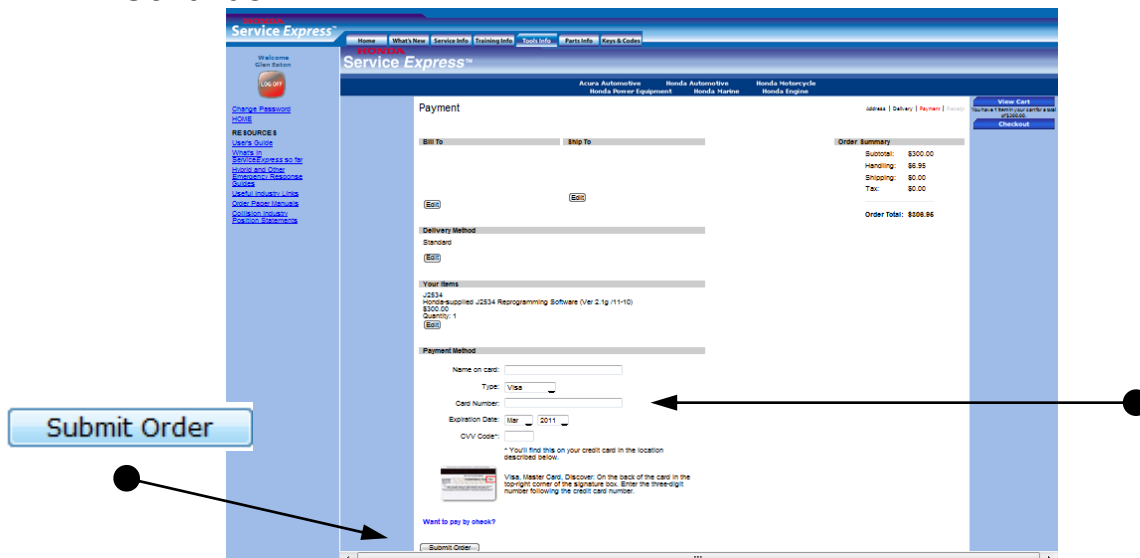
[Help](#) | [Acronyms](#) | [System Requirements](#) | [FAQs](#) | [Terms & Conditions](#) | [Privacy Policy](#) | [Contact Us](#)

- Fill out applicable information and click on "Continue".

This document is copyrighted by Dearborn Group, Inc. Permission is granted to copy all and/or entire page portions of this manual, provided such copies are for use with the product provided by DG Technologies (Dearborn Group, Inc.) or any of its affiliates, and that each instance of DG Technologies, Dearborn Group, Inc., and our website www.dgtech.com remains on all copies as on the original.

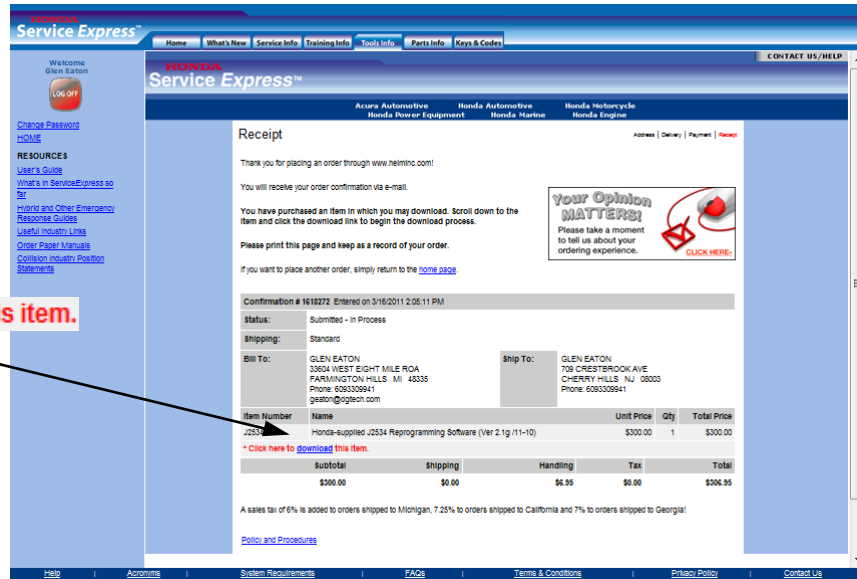


- Fill out applicable information, scroll to the bottom and click on “Continue”.

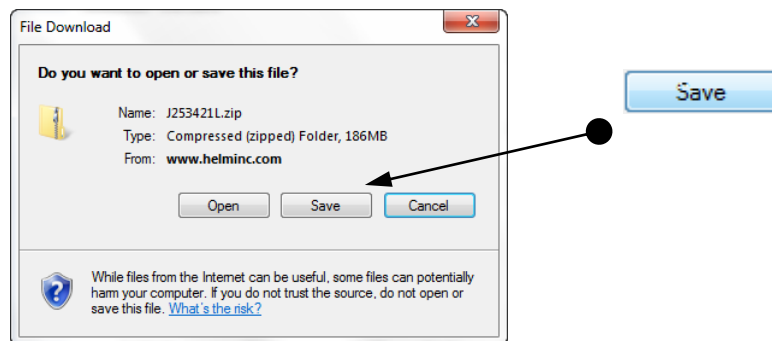


- Fill in Credit Card information and click on “Submit Order”.

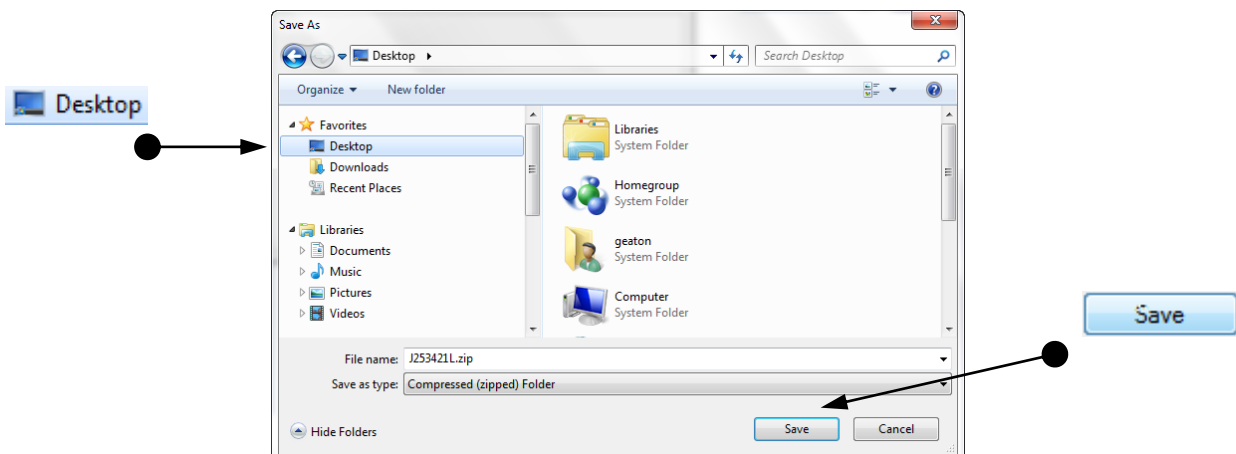
This document is copyrighted by Dearborn Group, Inc. Permission is granted to copy all and/or entire page portions of this manual, provided such copies are for use with the product provided by DG Technologies (Dearborn Group, Inc.) or any of its affiliates, and that each instance of DG Technologies, Dearborn Group, Inc., and our website www.dgtech.com remains on all copies as on the original.



- To download application, click on "download".

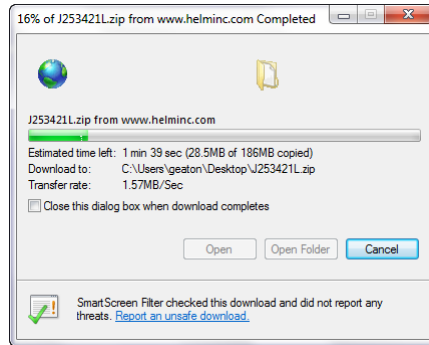


- Click on "Save".

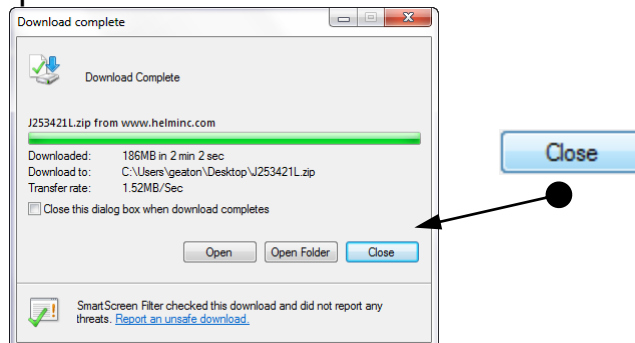


- It is recommended to save the file to the "Desktop" and then click "Save".

This document is copyrighted by Dearborn Group, Inc. Permission is granted to copy all and/or entire page portions of this manual, provided such copies are for use with the product provided by DG Technologies (Dearborn Group, Inc.) or any of its affiliates, and that each instance of DG Technologies, Dearborn Group, Inc., and our website www.dgtech.com remains on all copies as on the original.



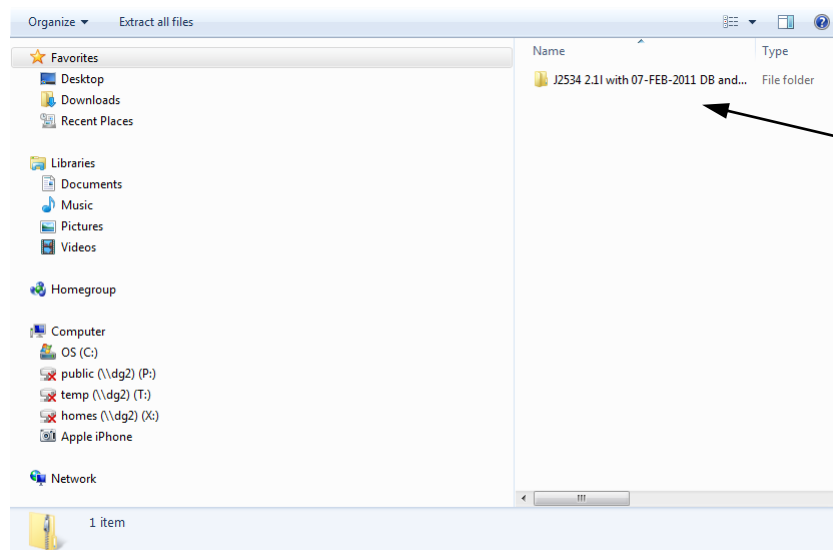
- Saving file to Desktop.



- Download complete. Click on “Close”.

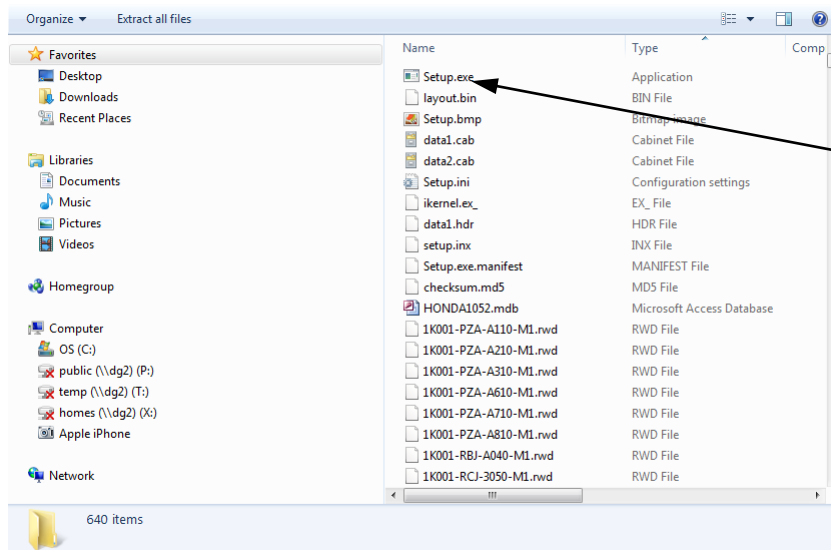


- Locate this icon on the desktop and “double-click” on it.

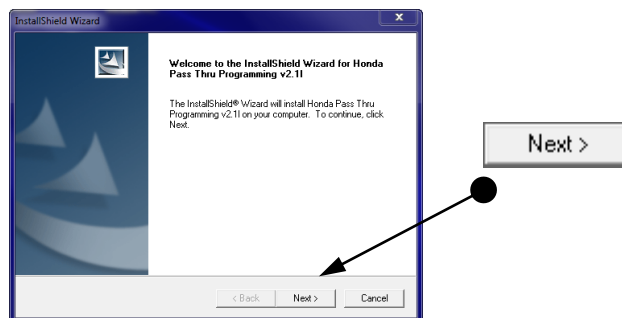


- Different operating systems will react differently. You basically want to “extract” the Zip file and locate the executable (*.exe) file. In this case, Vista is being use. Double-click on the zip file.

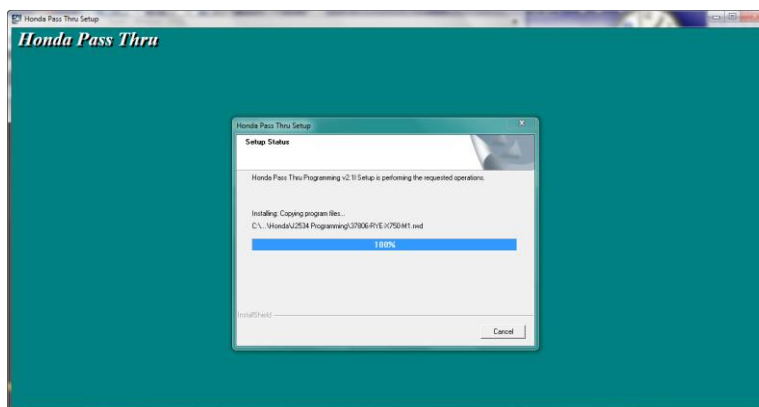
This document is copyrighted by Dearborn Group, Inc. Permission is granted to copy all and/or entire page portions of this manual, provided such copies are for use with the product provided by DG Technologies (Dearborn Group, Inc.) or any of its affiliates, and that each instance of DG Technologies, Dearborn Group, Inc., and our website www.dgtech.com remains on all copies as on the original.



- Locate the “Setup.exe” file and “double-click” on it.

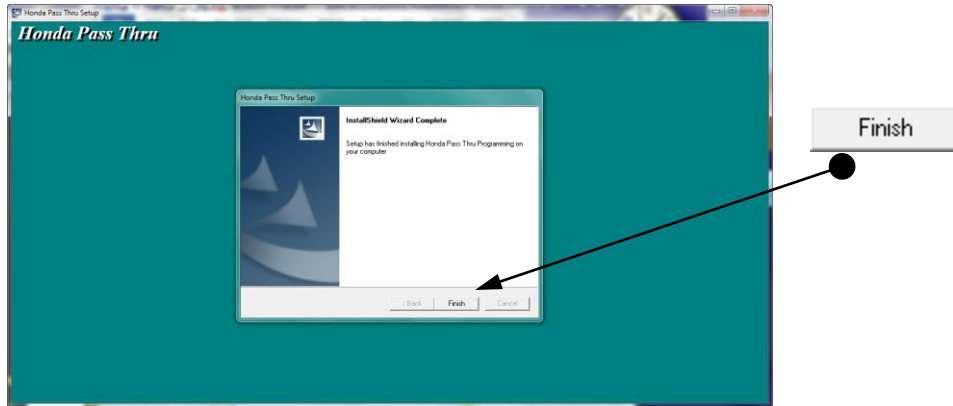


- Click on “Next”.



- Downloading...

This document is copyrighted by Dearborn Group, Inc. Permission is granted to copy all and/or entire page portions of this manual, provided such copies are for use with the product provided by DG Technologies (Dearborn Group, Inc.) or any of its affiliates, and that each instance of DG Technologies, Dearborn Group, Inc., and our website www.dgtech.com remains on all copies as on the original.

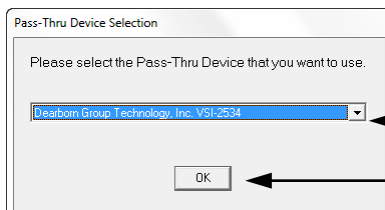


- Click on “Finish”.

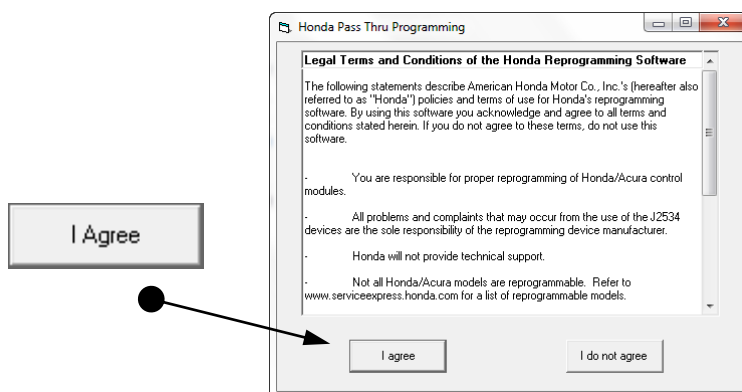
Honda Reprogramming (pg. 16-19)



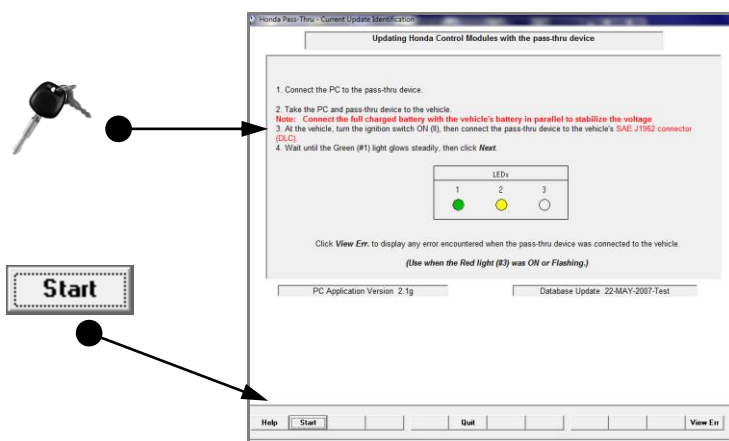
- Locate the “Honda Pass Thru” program in the “Start”, “Programs”, “Honda” menu and click on it.



- Select the “Dearborn Group Technology, Inc. VSI-2534” device and click “Ok”.

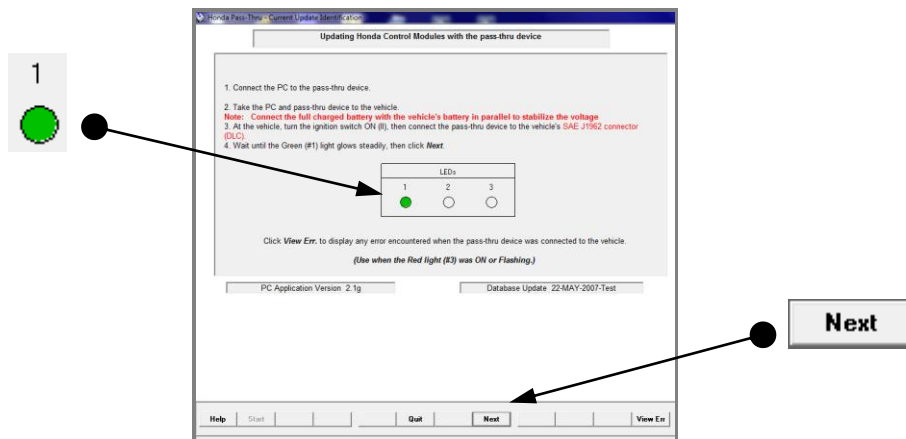


- Read Terms and Conditions and click “I agree” to continue.

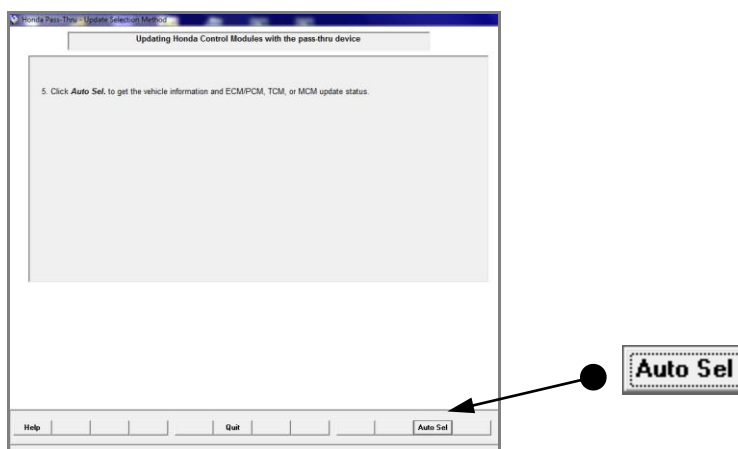


- Read screen carefully and take appropriate actions, then turn ignition key “ON” and click “Start”...

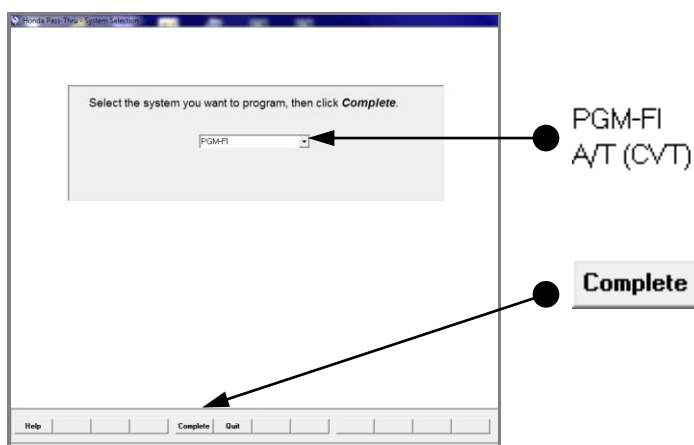
This document is copyrighted by Dearborn Group, Inc. Permission is granted to copy all and/or entire page portions of this manual, provided such copies are for use with the product provided by DG Technologies (Dearborn Group, Inc.) or any of its affiliates, and that each instance of DG Technologies, Dearborn Group, Inc., and our website www.dgtech.com remains on all copies as on the original.



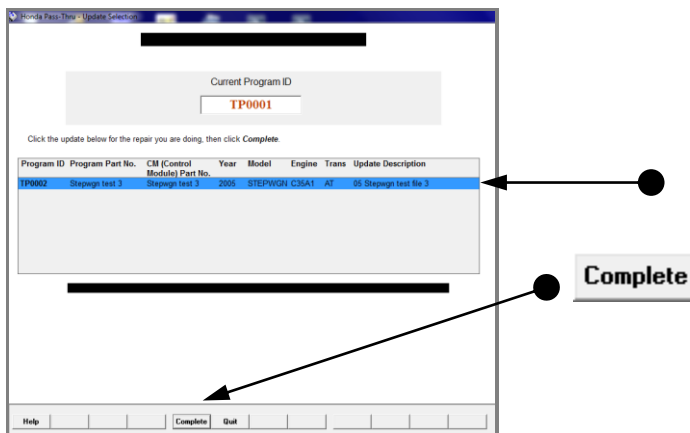
- ...when green light glows steadily, click “Next”.



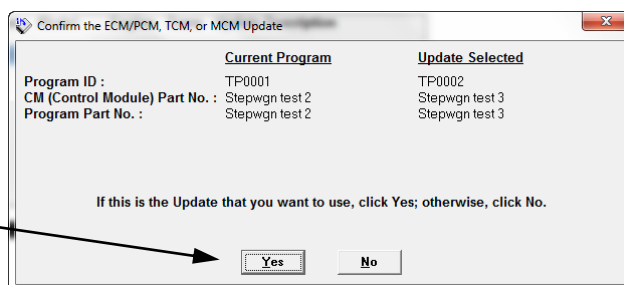
- Click on “Auto Sel”.



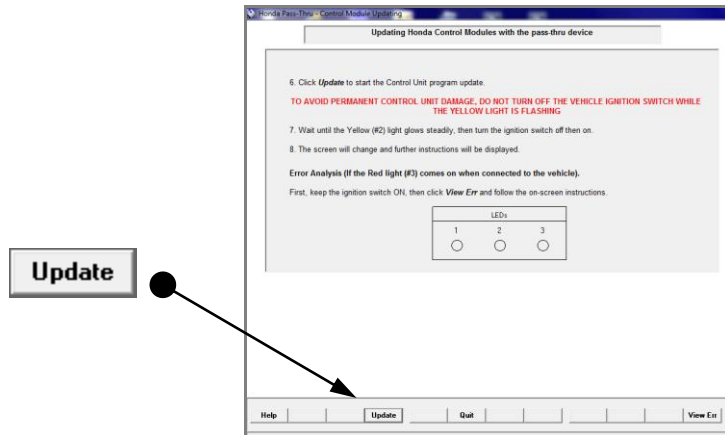
- From the drop-down list, select the system to be programmed and then click “Complete”.



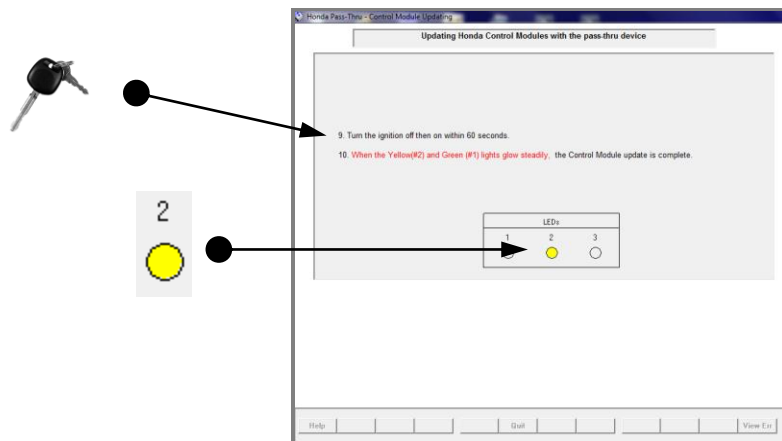
- Select the update to be performed and then click “Complete”.



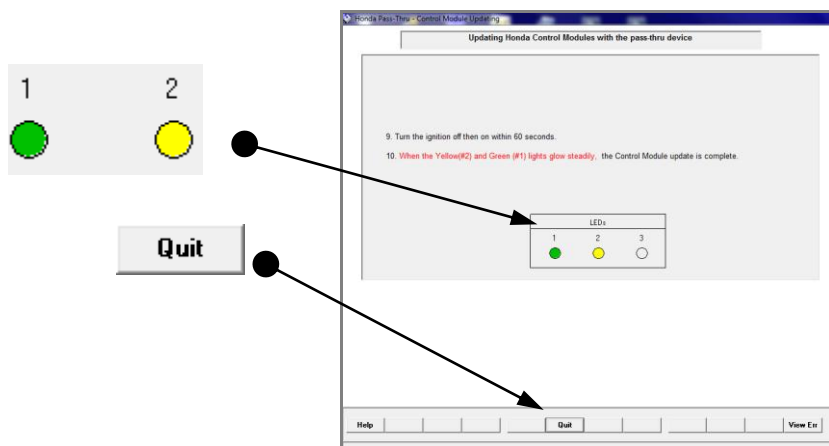
- Verify the update to be performed and click on “Yes” to continue.



- Click on “Update” to begin programming.



- Once the yellow light is glowing steadily, turn the ignition “on” and then “off” within 60 seconds of each other...



- ...when the Green and Yellow lights are glowing steady, the programming process is complete. Click on “Quit” to go back to the beginning of the program and then click “Quit” again to exit the program.