

Mazda

Reprogramming User Guide

Version 1.0

April 2011

Foreword

This document describes DG Technologies VSI-2534, a SAE J2534 Pass-Thru device, with its primary purpose to program automotive ECUs (Electronic Control Units). It provides module programming for development, end-of-line testing and re-programming. This document shows the general procedures for purchasing, installing and using the OEM programming application with the VSI-2534 Pass-Thru device. Because the procedures are generic in nature, this may not capture every screen or every scenario for each and every vehicle. For any screen, read the directions on the screen and proceed as indicated. Programming is vehicle specific and directions may vary. All documentation is subject to change at any time. Any and all OEM documentation should be read in its entirety along with the vehicle Service Manual prior to programming.

The VSI-2534 is also useful for vehicle diagnostics, development, general design, hardware in-the-loop simulation and anywhere communications with a vehicle network are required.

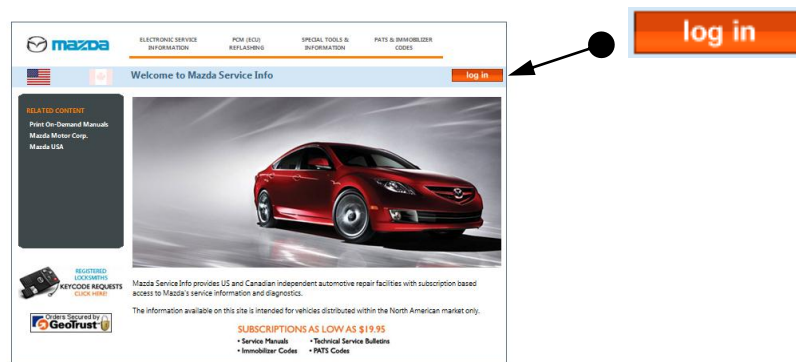
Table of Contents

- Registration, Subscription and Installation (pg. 2-8)
- Mazda Reprogramming Guide (pg. 9-23)

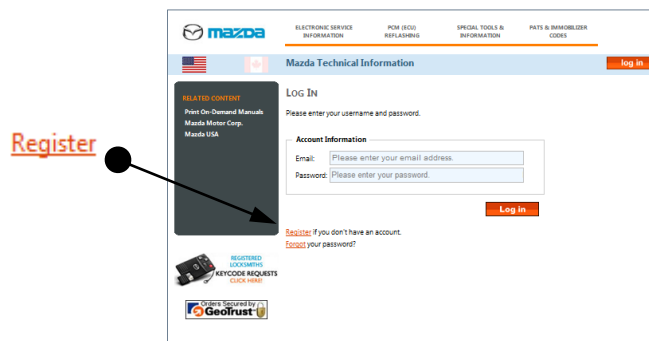
© 2006 - 2011 Dearborn Group, Inc.
33604 West Eight Mile Road
Farmington Hills, MI 48335
Phone (248) 888-2000 • Fax (248) 888-9977

This document is copyrighted by Dearborn Group, Inc. Permission is granted to copy all and/or entire page portions of this manual, provided such copies are for use with the product provided by DG Technologies (Dearborn Group, Inc.) or any of its affiliates, and that each instance of DG Technologies, Dearborn Group, Inc., and our website www.dgtech.com remains on all copies as on the original.

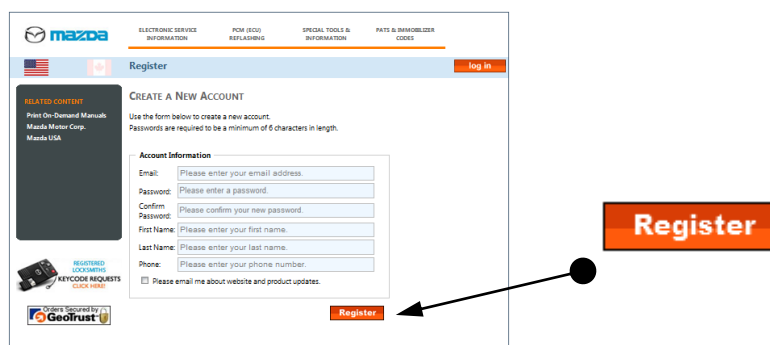
Registration & Subscription (pg. 2-4)



- Go to www.mazdaserviceinfo.com and click on “log in”.

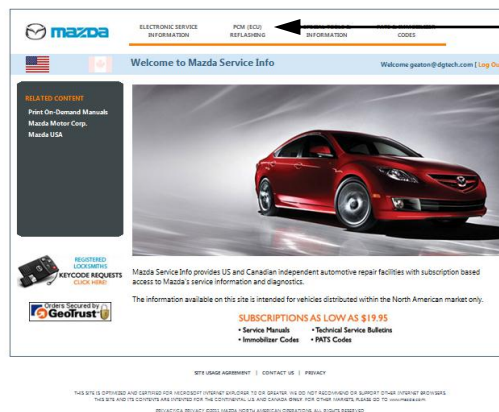


- Click on “Register” to create an account.



- Fill out required information and click on “Register”.

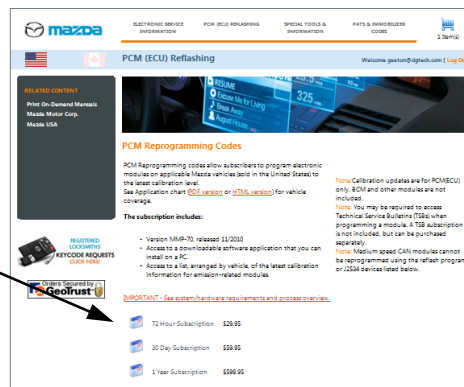
This document is copyrighted by Dearborn Group, Inc. Permission is granted to copy all and/or entire page portions of this manual, provided such copies are for use with the product provided by DG Technologies (Dearborn Group, Inc.) or any of its affiliates, and that each instance of DG Technologies, Dearborn Group, Inc., and our website www.dgtech.com remains on all copies as on the original.



PCM (ECU)
REFLASHING

- Registration complete. Click on “PCM (ECU) REFLASHING”.

- 72 Hour Subscription \$29.95
- 30 Day Subscription \$59.95
- 1 Year Subscription \$599.95

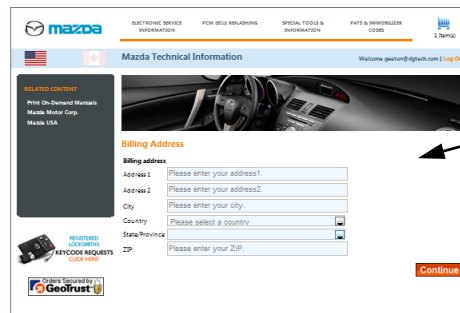


- Identify and select applicable subscription term.



- Click on the cart.

This document is copyrighted by Dearborn Group, Inc. Permission is granted to copy all and/or entire page portions of this manual, provided such copies are for use with the product provided by DG Technologies (Dearborn Group, Inc.) or any of its affiliates, and that each instance of DG Technologies, Dearborn Group, Inc., and our website www.dgtech.com remains on all copies as on the original.

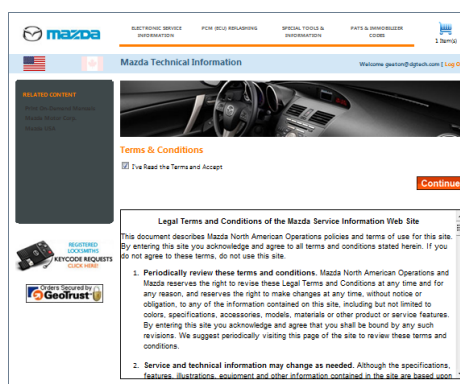


Billing Address

Address 1: Please enter your address1.
Address 2: Please enter your address2.
City: Please enter your city.
Country: Please select a country.
State/Province: Please select a state/province.
ZIP: Please enter your ZIP.

Continue

- Fill in applicable information and click on “Continue”.



Terms & Conditions

☒ I've Read the Terms and Accept

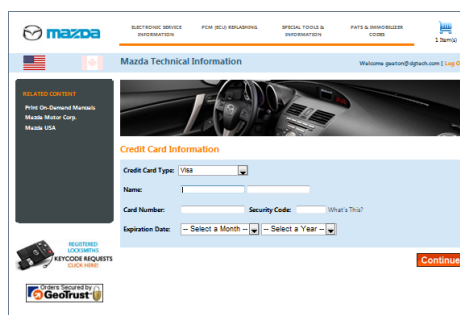
Legal Terms and Conditions of the Mazda Service Information Web Site

This document describes Mazda North American Operations policies and terms of use for this site. By entering this site you acknowledge and agree to all terms and conditions stated herein. If you do not agree to these terms, do not use this site.

- Periodically review these terms and conditions. Mazda North American Operations and Mazda reserves the right to revise these Legal Terms and Conditions at any time and for any reason, and reserves the right to make changes at any time, without notice or obligation, to any of the information contained on this site, including but not limited to colors, specifications, accessories, models, materials or other product or service features. By entering this site you acknowledge and agree that you shall be bound by any such revisions. We suggest periodically visiting this page of the site to review these terms and conditions.
- Service and technical information may change as needed. Although the specifications, features, illustrations, equipment and other information contained in the site are based upon

Continue

- Scroll through and read the “Terms and Conditions” and, if agreeable, click on the check box and then “Continue” at the bottom.



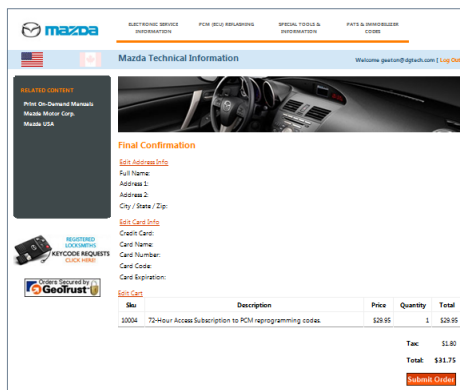
Credit Card Information

Credit Card Type: VISA
Name: _____
Card Number: _____ Security Code: _____
Expiration Date: Select a Month Select a Year

Continue

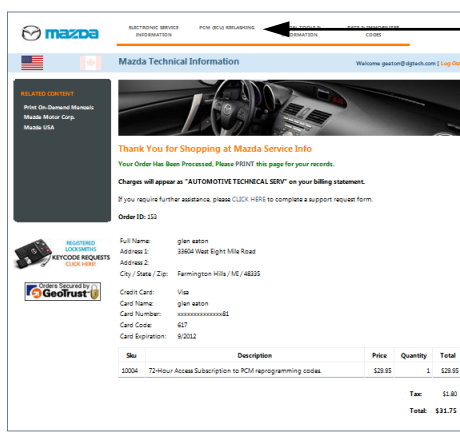
- Fill out remaining information and click on “Continue”.

This document is copyrighted by Dearborn Group, Inc. Permission is granted to copy all and/or entire page portions of this manual, provided such copies are for use with the product provided by DG Technologies (Dearborn Group, Inc.) or any of its affiliates, and that each instance of DG Technologies, Dearborn Group, Inc., and our website www.dgtech.com remains on all copies as on the original.



Submit Order

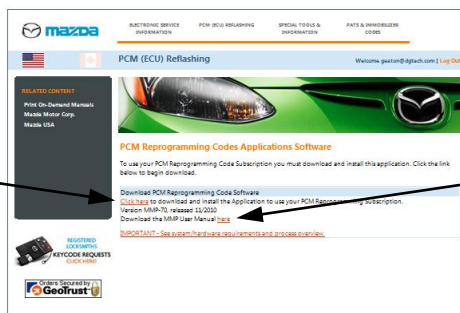
- Click on “Submit Order”.



**PCM (ECU)
REFLASHING**

- Order Complete. Click on “PCM (ECU) REFLASHING” to continue.

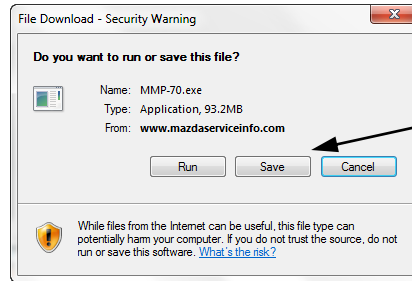
[Click here](#)



[here](#)

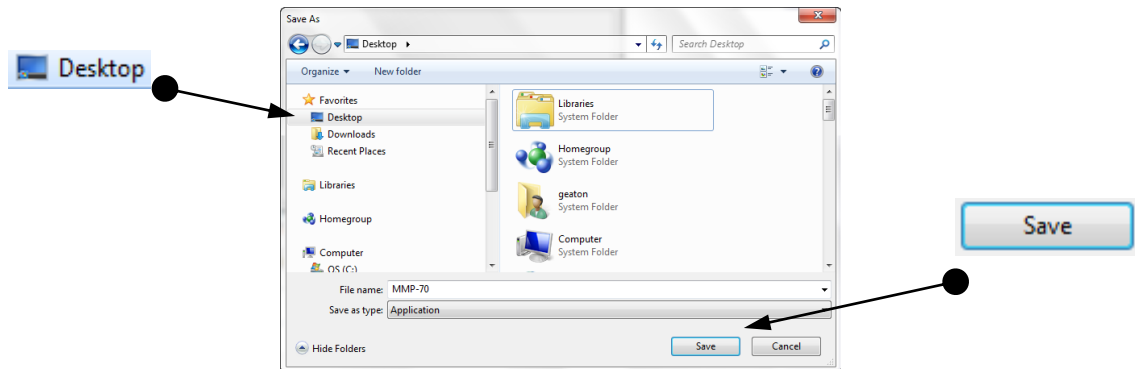
- It is recommended to download the “MMP User Manual”, read and retain. “Click here” to download and install the MMP application.

This document is copyrighted by Dearborn Group, Inc. Permission is granted to copy all and/or entire page portions of this manual, provided such copies are for use with the product provided by DG Technologies (Dearborn Group, Inc.) or any of its affiliates, and that each instance of DG Technologies, Dearborn Group, Inc., and our website www.dgtech.com remains on all copies as on the original.



Save

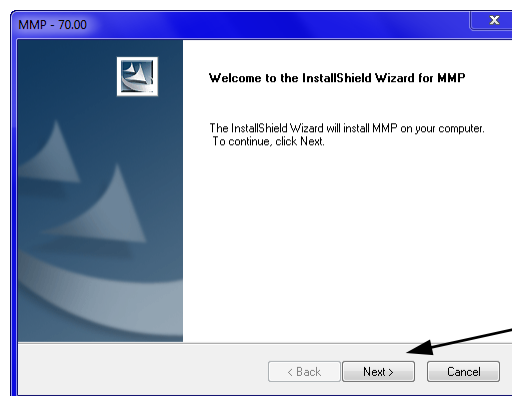
- It is recommended to save file to Desktop. Click on “Save”.



- Point to “Desktop” and click “Save”.

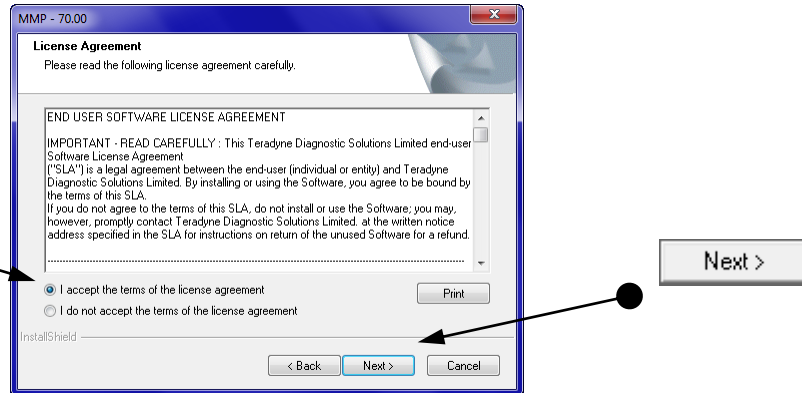


- Locate this icon on your Desktop and double-click on it to install the Mazda application.

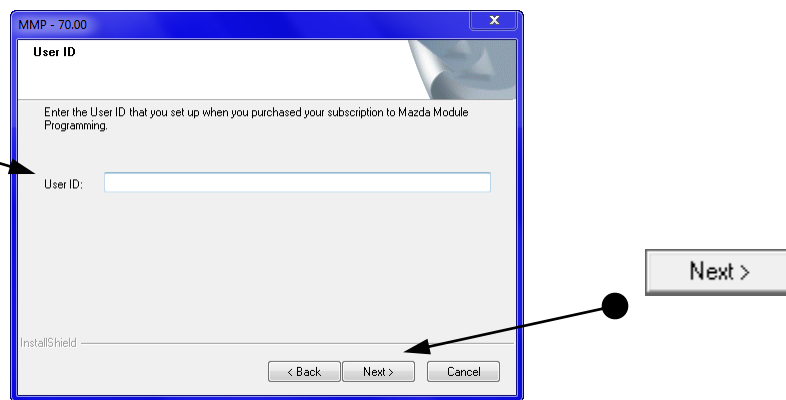


Next >

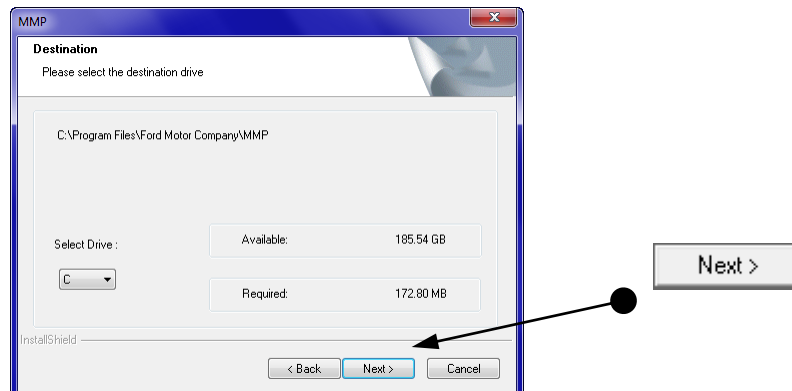
- Click on “Next”.



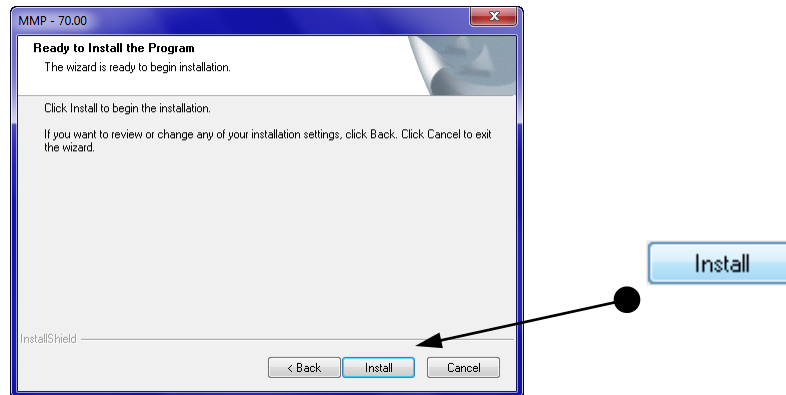
- Read and, if agreed, click on the “I accept...” radio button and then “Next”.



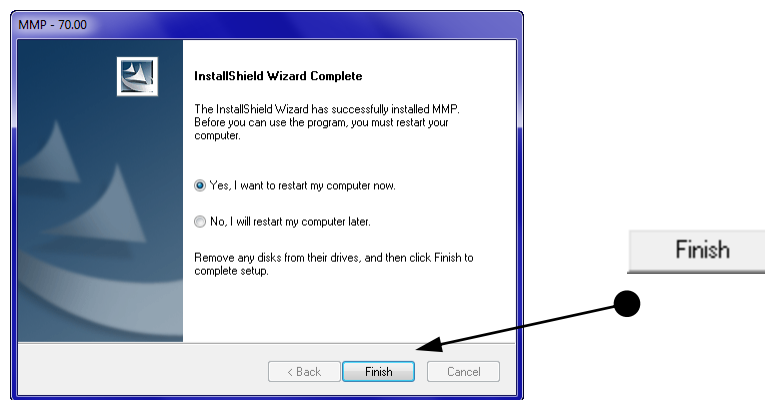
- Enter the “User ID” information, which is using the email address originally signed up and click “Next”.



- Review “Destination” requirements and click on “Next”.

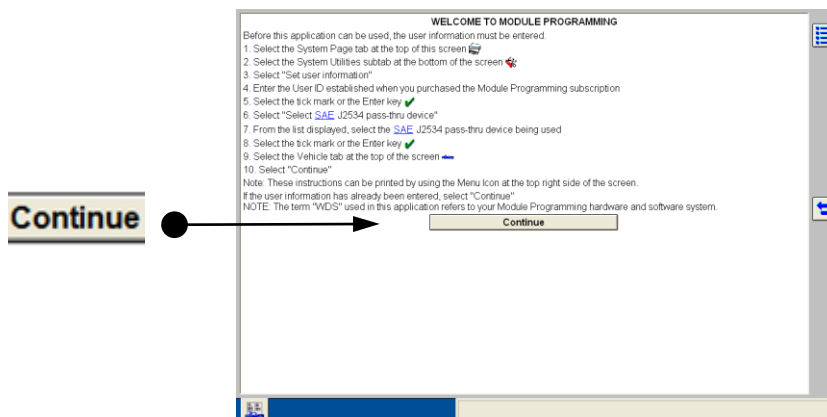


- Click on “Install” and wait...

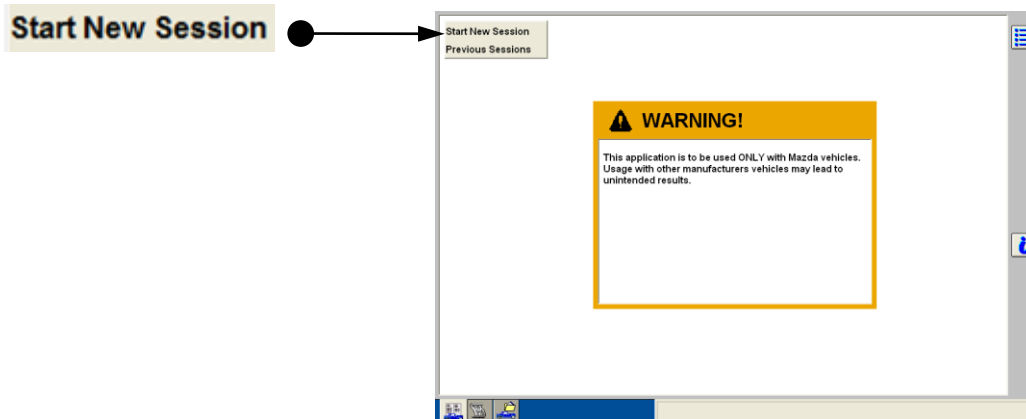


- Upon completion, click on “Finish”. It is recommended to let computer reboot.

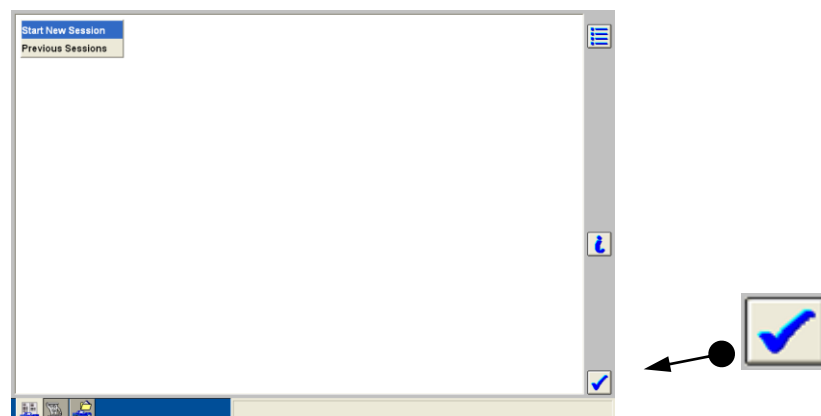
Mazda Reprogramming Guide (pg. 9-23)



- Click on "Continue".

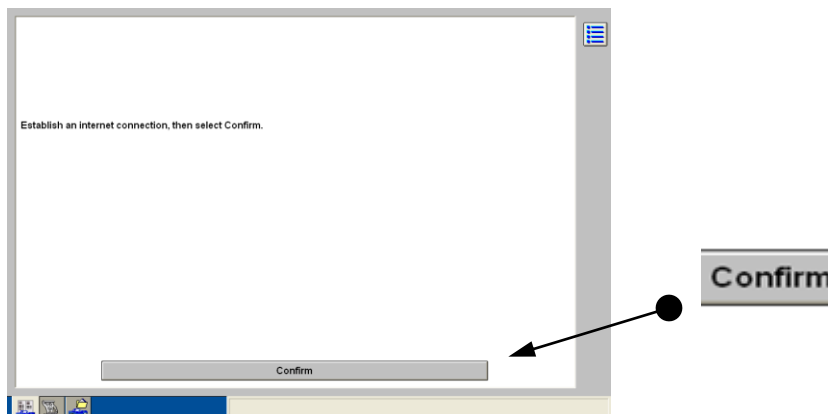


- Click on "Start New Session".

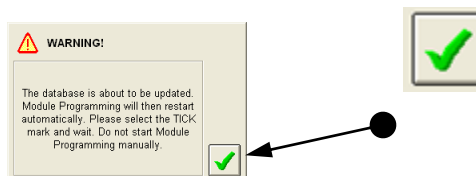


- Click on the "Tick icon".

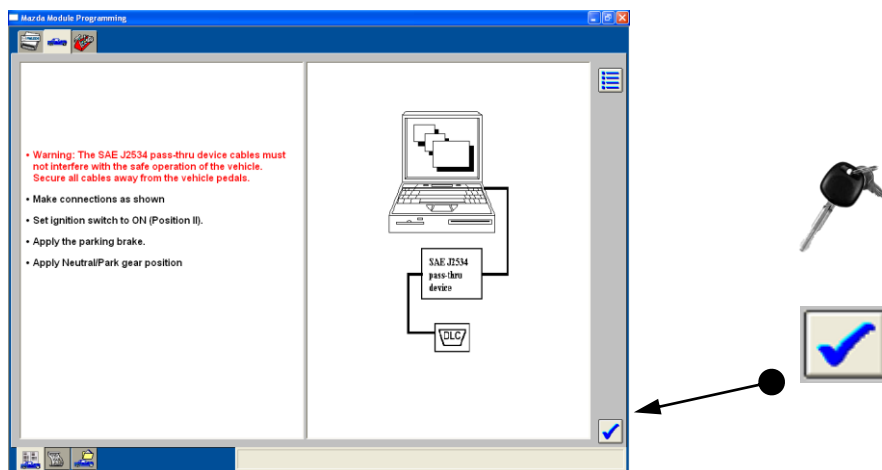
This document is copyrighted by Dearborn Group, Inc. Permission is granted to copy all and/or entire page portions of this manual, provided such copies are for use with the product provided by DG Technologies (Dearborn Group, Inc.) or any of its affiliates, and that each instance of DG Technologies, Dearborn Group, Inc., and our website www.dgtech.com remains on all copies as on the original.



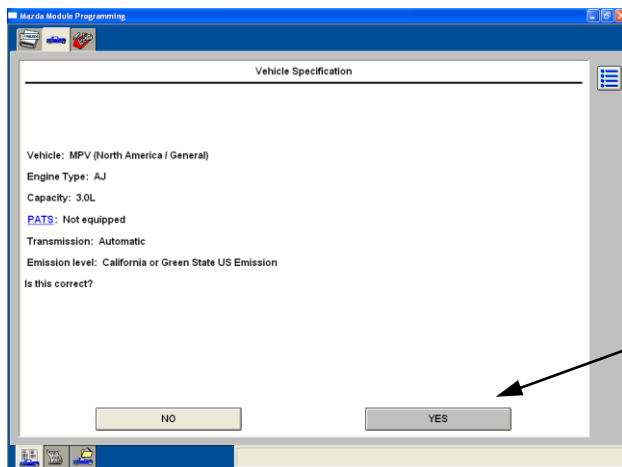
- Establish an Internet connection and select Confirm. To ensure your Internet connection is functioning, open an Internet session.



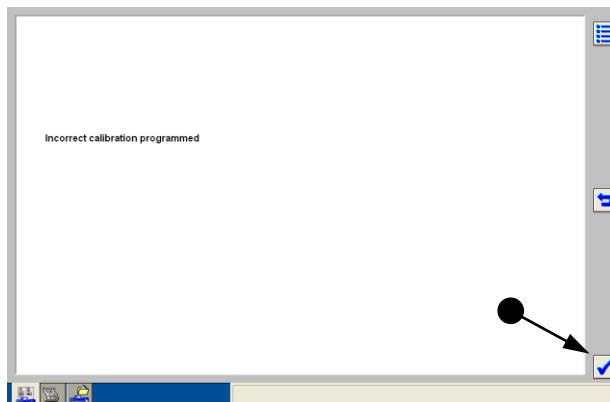
- Read the “WARNING!” and then click on the green Tick icon and wait. If the MMP Application does close, just wait for MMP to open again. If it does close, you will start from the beginning of the MMP session.



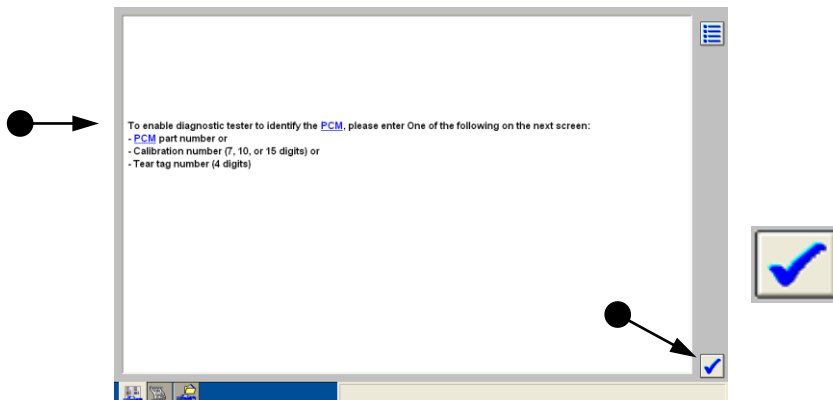
- Read the important Warning information. **NOTE:** When doing off-car reprogramming, some prompts do not apply and the appropriate responses are those as if you were doing an on-car reprogramming event. Click the “Tick icon” to continue.



- **IMPORTANT!** Correct vehicle identification is critical!
 - Click "YES" if:
 - the original PCM is being programmed and the information is correct.
 - the original PCM is being replaced and communication was successful and the information is correct.
 - **Proceed to pg. 13**
 - Click "NO" if:
 - the original PCM is not available.
 - communication to the original PCM was not successful.
 - a replacement PCM is already installed in the vehicle.
 - **If "NO" is selected...**



- Click on the "Tick icon".



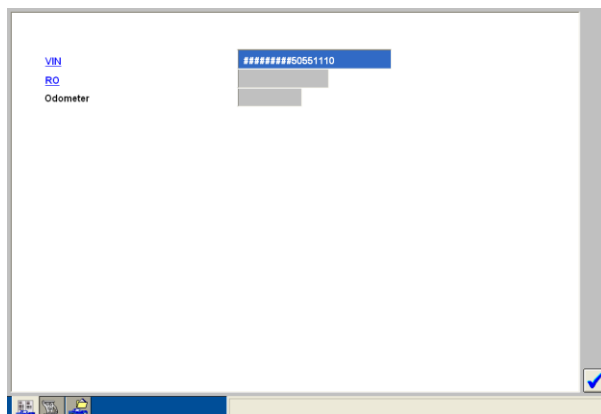
- Gather the required information and click on the "Tick" icon. Tear tag data is considered the best option.

This document is copyrighted by Dearborn Group, Inc. Permission is granted to copy all and/or entire page portions of this manual, provided such copies are for use with the product provided by DG Technologies (Dearborn Group, Inc.) or any of its affiliates, and that each instance of DG Technologies, Dearborn Group, Inc., and our website www.dgtech.com remains on all copies as on the original.

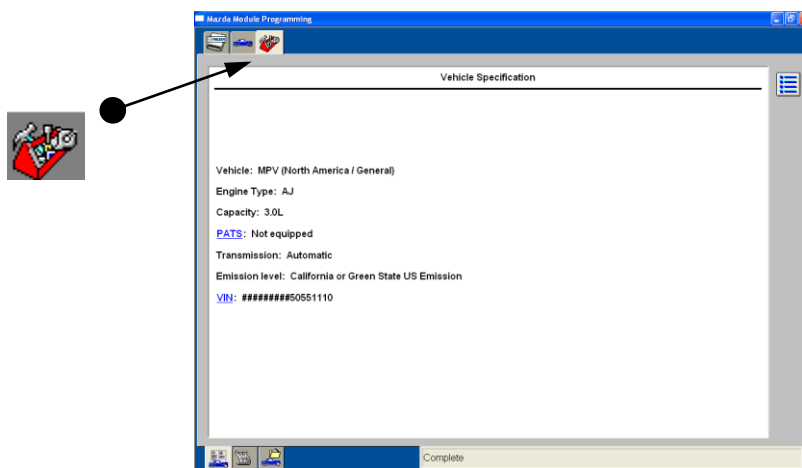
- Type in one of the required information inputs and click on the “Tick” icon.

- Vehicle Specification has been corrected to the proper vehicle. Click on “Yes” to accept change.

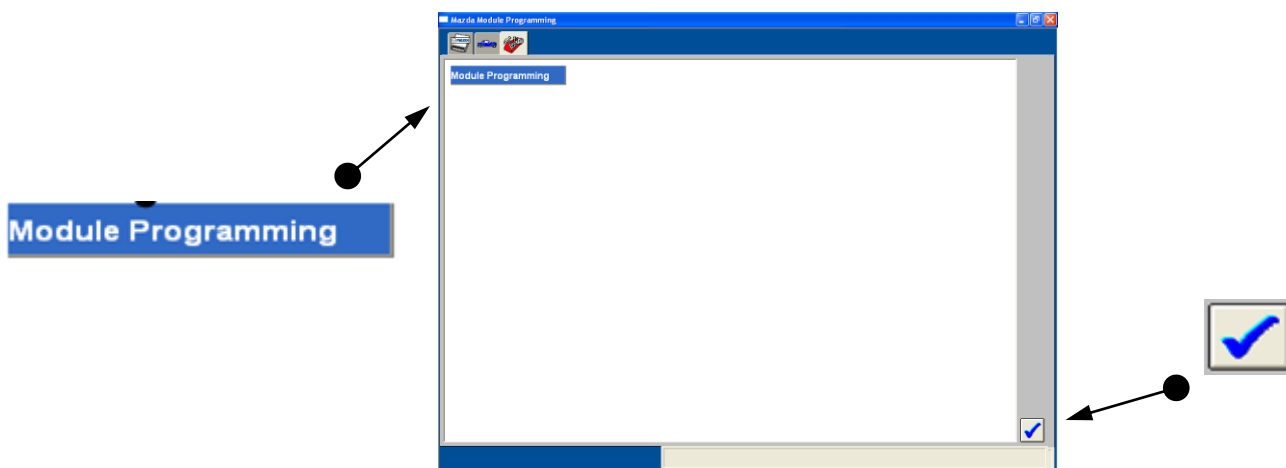
- Select “Confirm” and proceed.



- These fields are **OPTIONAL**. For more information regarding this feature, please see the Mazda Module Programming User's Guide. When done, click on the "Tick icon".

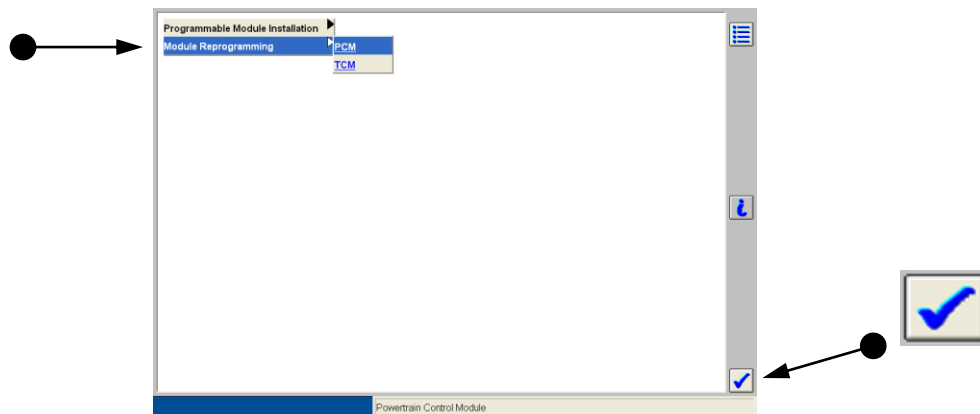


- Click on the "Toolbox Tab".

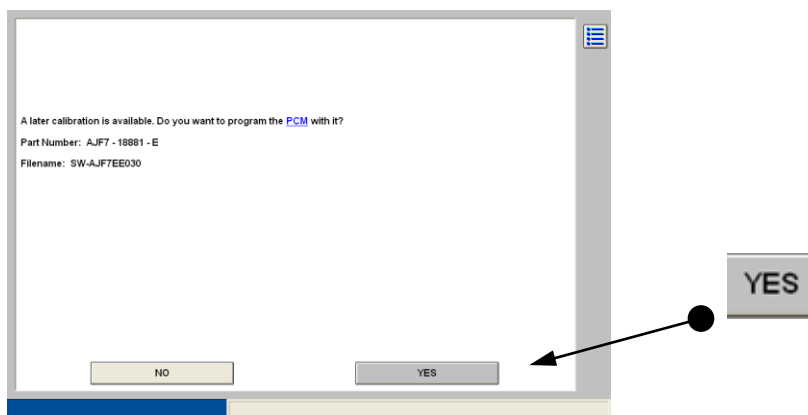


- Click on "Module Programming" and then the "Tick icon".

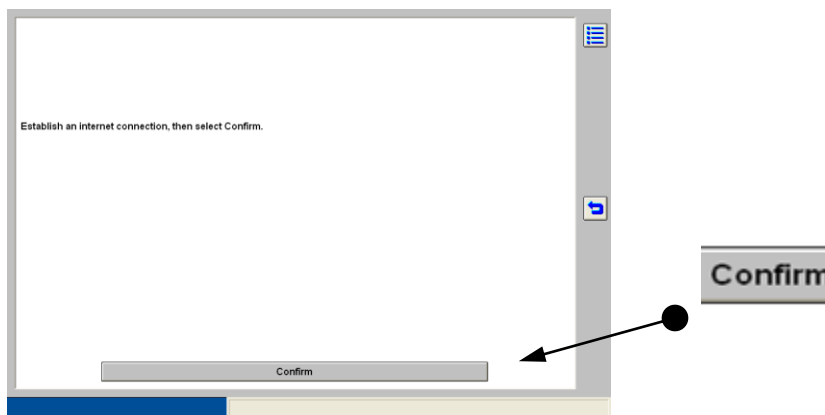
This document is copyrighted by Dearborn Group, Inc. Permission is granted to copy all and/or entire page portions of this manual, provided such copies are for use with the product provided by DG Technologies (Dearborn Group, Inc.) or any of its affiliates, and that each instance of DG Technologies, Dearborn Group, Inc., and our website www.dgtech.com remains on all copies as on the original.



- **Programmable Module Installation:** Use this option when replacing a PCM when the original PCM communication was successful.
- **Module Reprogramming:** Use this option when reprogramming a module with an updated calibration file.
- **Programmable Parameters:** (not shown, but would be listed if applicable) change configurable parameters such as customer preference items (ex: horn chirp, lighting delays, etc.) or vehicle modifications (ex: tire size or axle ratio).
- **Select the appropriate option and then the "Tick icon".**

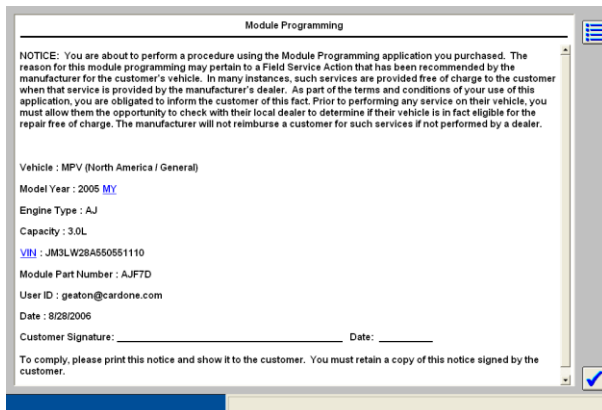


- Click "Yes".



- Ensure Internet Connection and click "Confirm".

This document is copyrighted by Dearborn Group, Inc. Permission is granted to copy all and/or entire page portions of this manual, provided such copies are for use with the product provided by DG Technologies (Dearborn Group, Inc.) or any of its affiliates, and that each instance of DG Technologies, Dearborn Group, Inc., and our website www.dgtech.com remains on all copies as on the original.



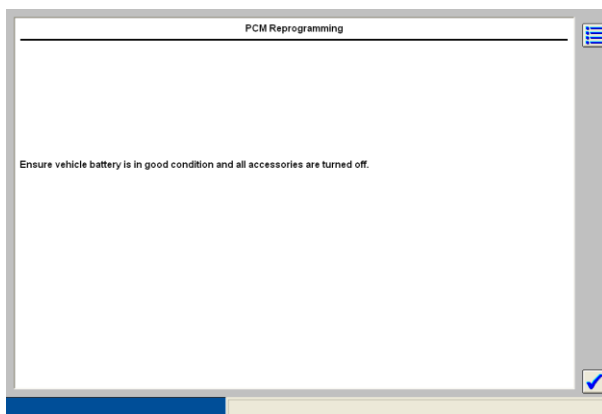
Module Programming

NOTICE: You are about to perform a procedure using the Module Programming application you purchased. The reason for this module programming may pertain to a Field Service Action that has been recommended by the manufacturer for the customer's vehicle. In many instances, such services are provided free of charge to the customer when that service is provided by the manufacturer's dealer. As part of the terms and conditions of your use of this application, you are obligated to inform the customer of this fact. Prior to performing any service on their vehicle, you must allow them the opportunity to check with their local dealer to determine if their vehicle is in fact eligible for the repair free of charge. The manufacturer will not reimburse a customer for such services if not performed by a dealer.

Vehicle : MPV (North America / General)
 Model Year : 2005 MY
 Engine Type : AJ
 Capacity : 3.0L
 VIN : JM3LW28A650551110
 Module Part Number : AJF7D
 User ID : geaton@cardone.com
 Date : 8/28/2006
 Customer Signature : _____ Date: _____

To comply, please print this notice and show it to the customer. You must retain a copy of this notice signed by the customer.

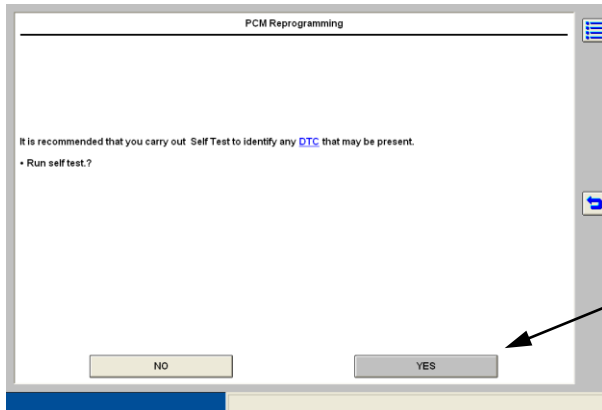
- Read and click the "Tick" mark.



PCM Reprogramming

Ensure vehicle battery is in good condition and all accessories are turned off.

- Click the "Tick" mark.



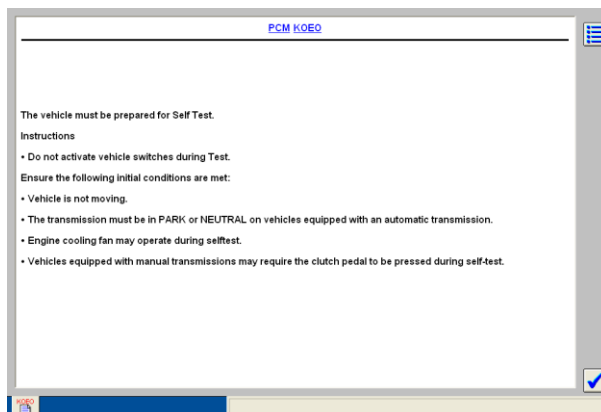
PCM Reprogramming

It is recommended that you carry out Self Test to identify any DTC that may be present.

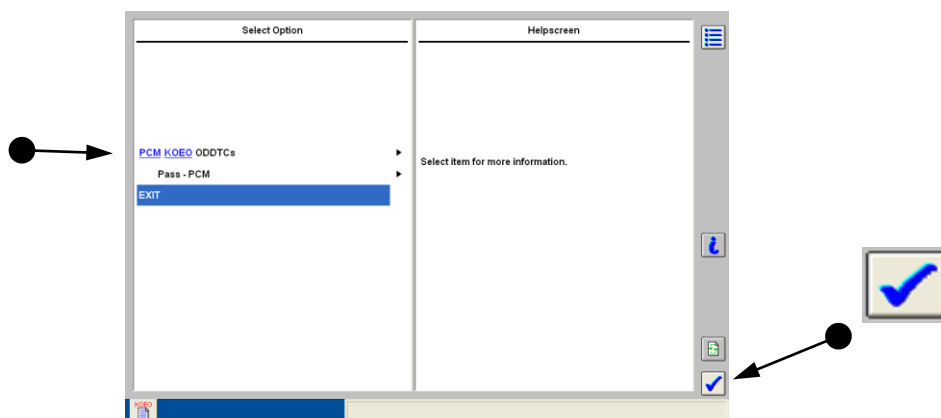
• Run self test?

NO YES

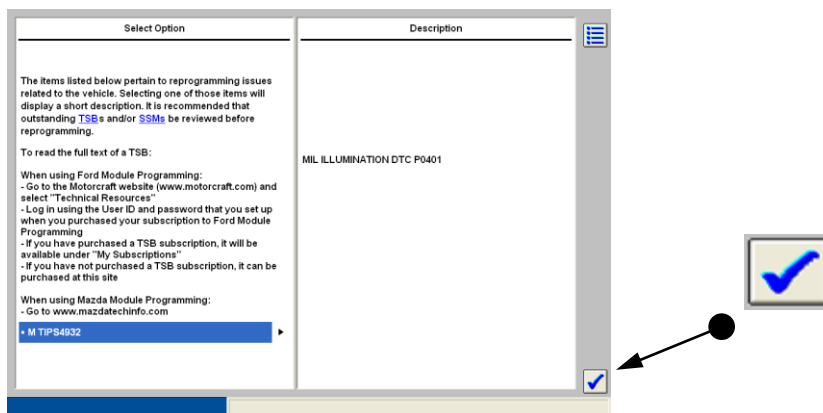
- Click "Yes".



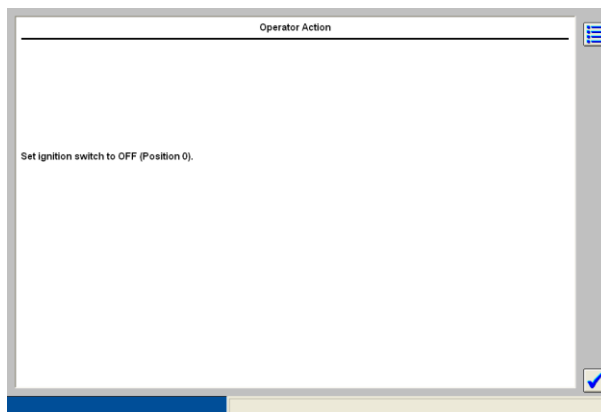
- Read and click the “Tick” mark.



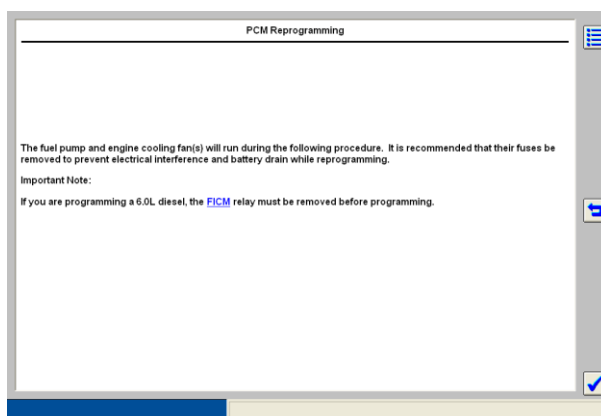
- Where there is an arrow, you may click on the option(s) listed on the left side of the screen. Help information will appear on the right. Click on “Exit” and then click the “Tick” mark when done.



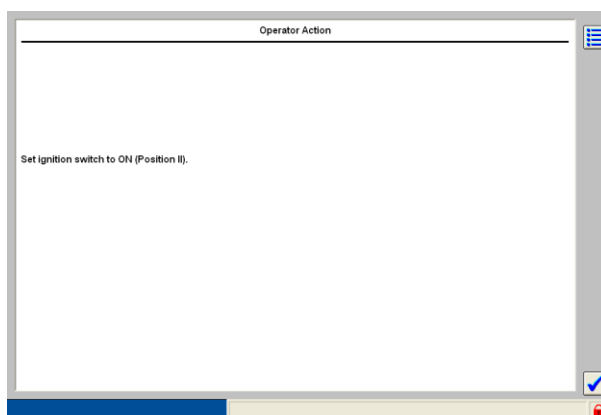
- Read and proceed by clicking on the “Tick” mark.



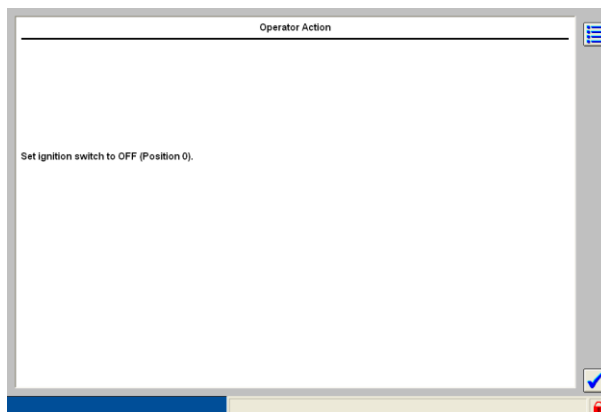
- Turn ignition switch “Off” and click on the “Tick” mark.



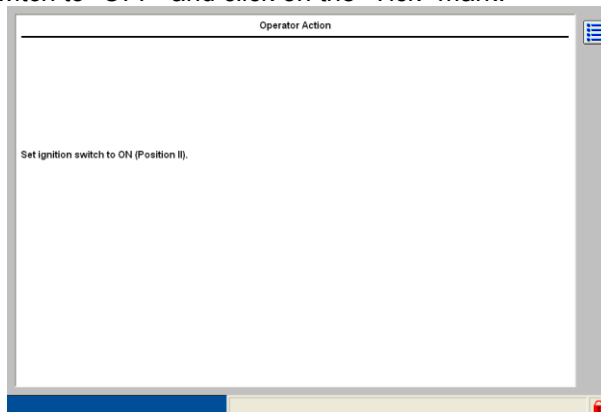
- Click on the “Tick” mark.



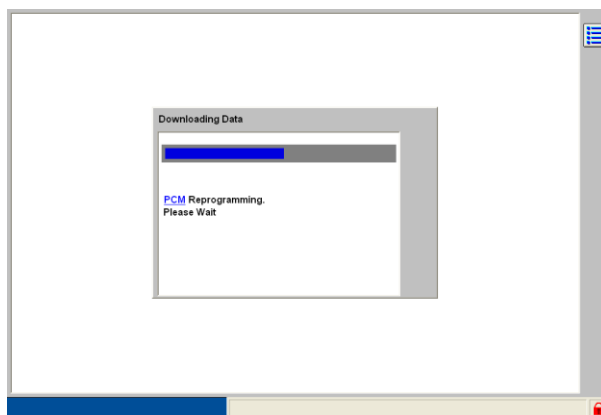
- Turn ignition switch to “ON” and click on the “Tick” mark.



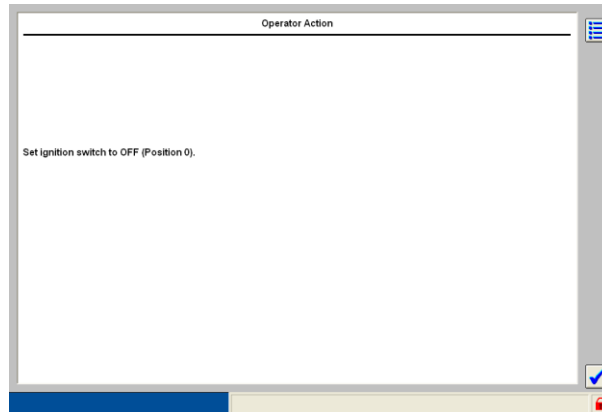
- Turn ignition switch to “OFF” and click on the “Tick” mark.



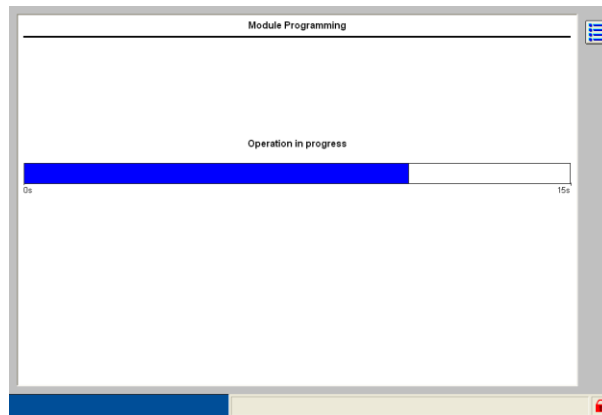
- Turn ignition switch to “ON”.



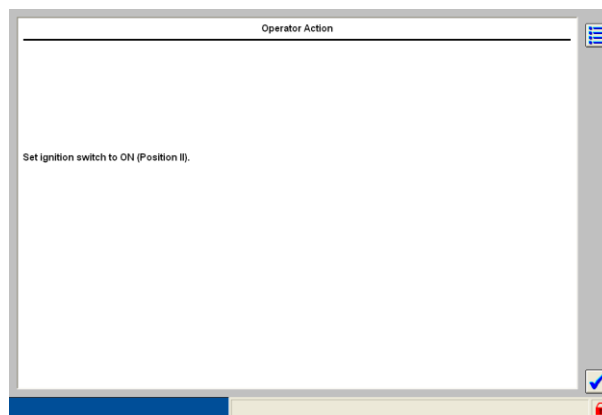
- Downloading data!



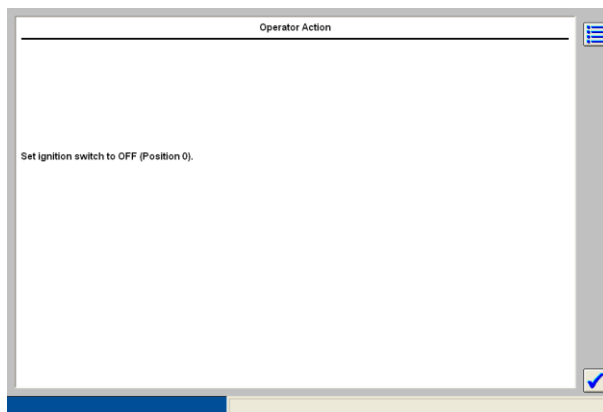
- Turn ignition switch to “OFF” and click on the “Tick” mark.



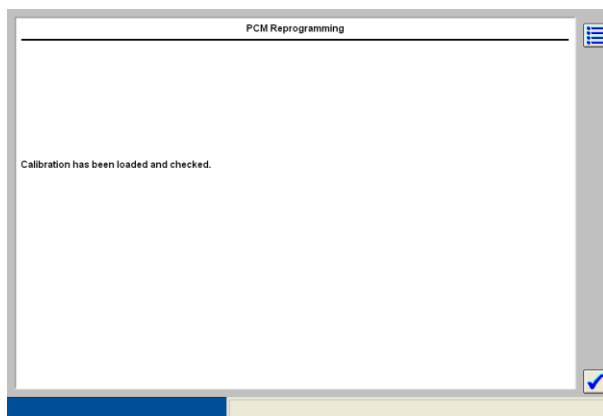
- Please wait...



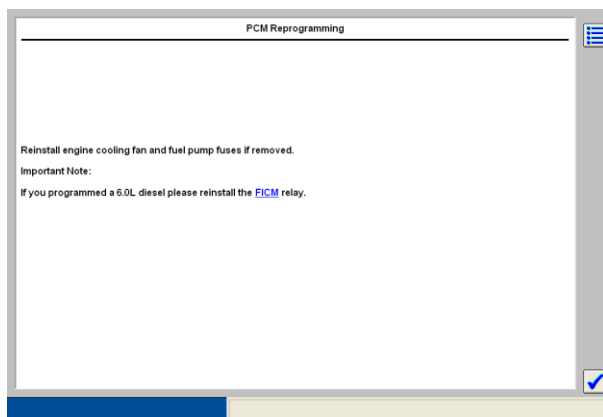
- Turn ignition switch to “ON” and click on the “Tick” mark.



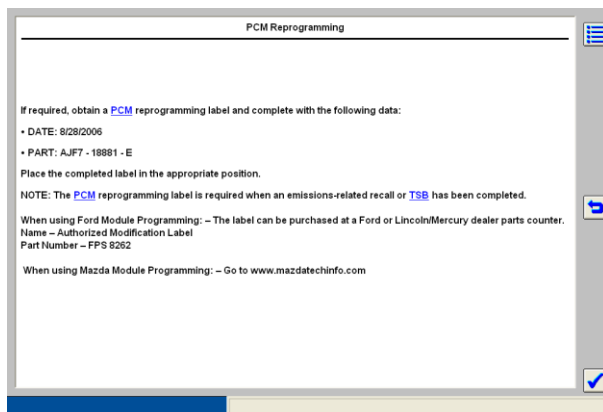
- Turn ignition switch to “OFF” and click on the “Tick” mark.



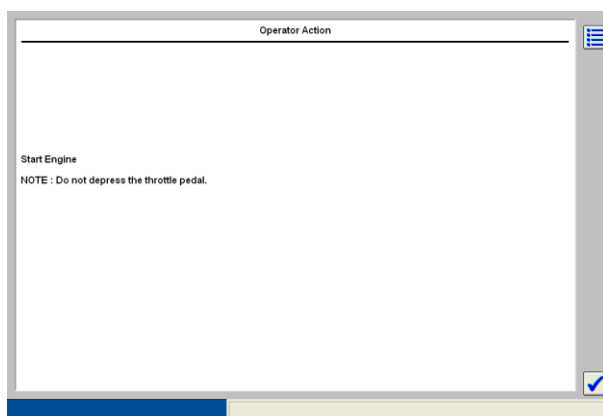
- Click on the “Tick” mark.



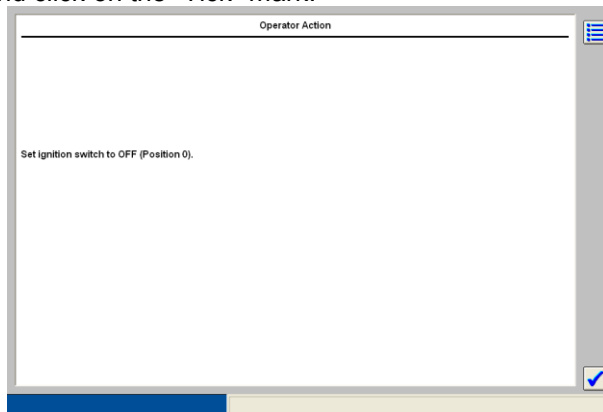
- Click on the “Tick” mark.



- Read and click on the “Tick” mark.

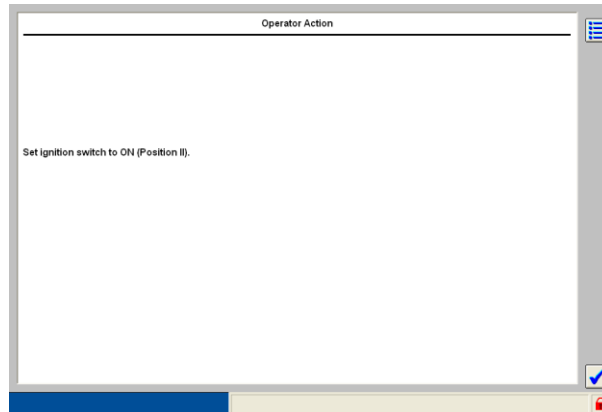


- Start Engine and click on the “Tick” mark.

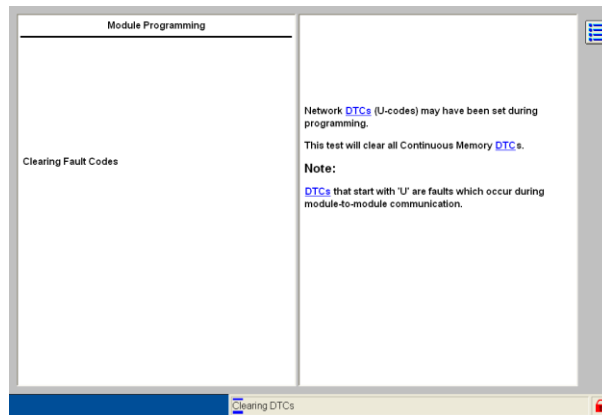


- Turn ignition switch to “OFF” and click on the “Tick” mark.

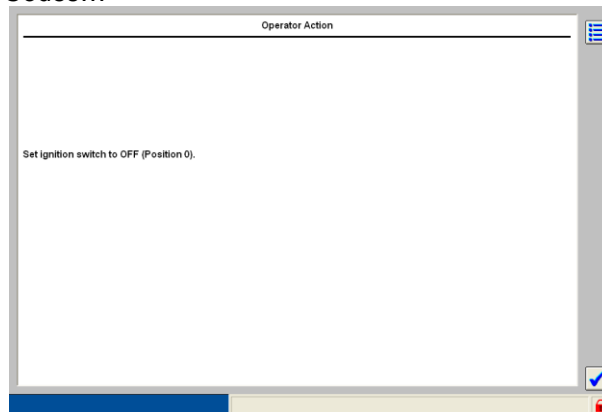
This document is copyrighted by Dearborn Group, Inc. Permission is granted to copy all and/or entire page portions of this manual, provided such copies are for use with the product provided by DG Technologies (Dearborn Group, Inc.) or any of its affiliates, and that each instance of DG Technologies, Dearborn Group, Inc., and our website www.dgtech.com remains on all copies as on the original.



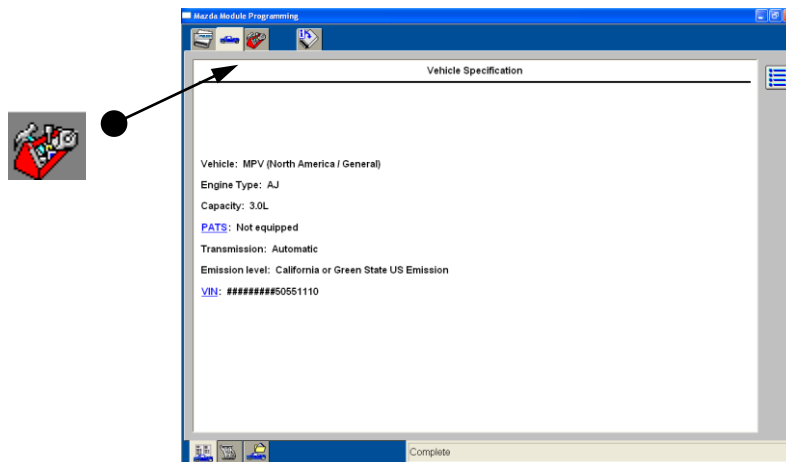
- Turn ignition switch to “ON” and click on the “Tick” mark.



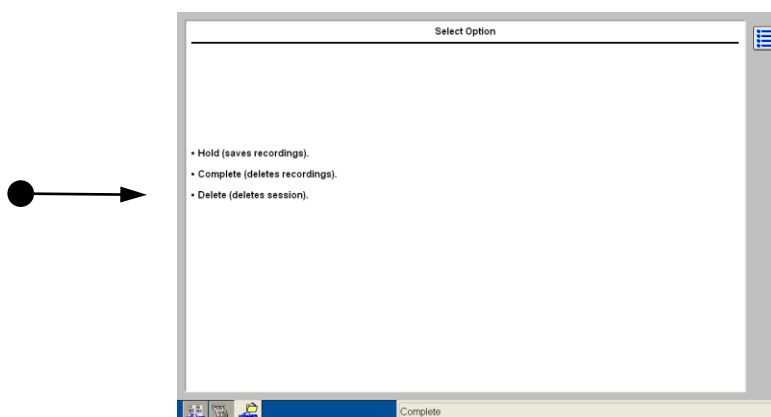
- Clearing Fault Codes...



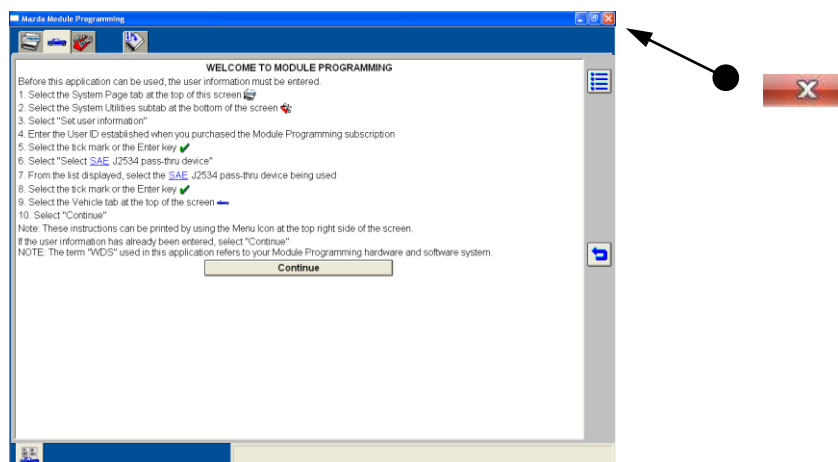
- Turn ignition switch to “OFF” and click on the “Tick” mark.



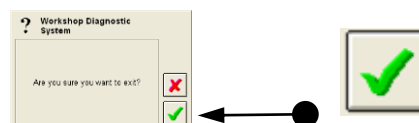
- Programming complete. Click on the “Toolbox”.



- Click on “Delete” to delete the session. More information on how to use these features is available in the Mazda User Guide.



- Close out of the MMP by clicking on the “X” in the upper right corner.



- Click on the green check mark.

This document is copyrighted by Dearborn Group, Inc. Permission is granted to copy all and/or entire page portions of this manual, provided such copies are for use with the product provided by DG Technologies (Dearborn Group, Inc.) or any of its affiliates, and that each instance of DG Technologies, Dearborn Group, Inc., and our website www.dgtech.com remains on all copies as on the original.