

# Toyota

# Reprogramming User Guide

**Version 1.0**

**April 2011**

## Foreword

This document describes DG Technologies VSI-2534, a SAE J2534 Pass-Thru device, with its primary purpose to program automotive ECUs (Electronic Control Units). It provides module programming for development, end-of-line testing and re-programming. This document shows the general procedures for purchasing, installing and using the OEM programming application with the VSI-2534 Pass-Thru device. Because the procedures are generic in nature, this may not capture every screen or every scenario for each and every vehicle. For any screen, read the directions on the screen and proceed as indicated. Programming is vehicle specific and directions may vary. All documentation is subject to change at any time. Any and all OEM documentation should be read in its entirety along with the vehicle Service Manual prior to programming.

The VSI-2534 is also useful for vehicle diagnostics, development, general design, hardware in-the-loop simulation and anywhere communications with a vehicle network are required.

## Table of Contents

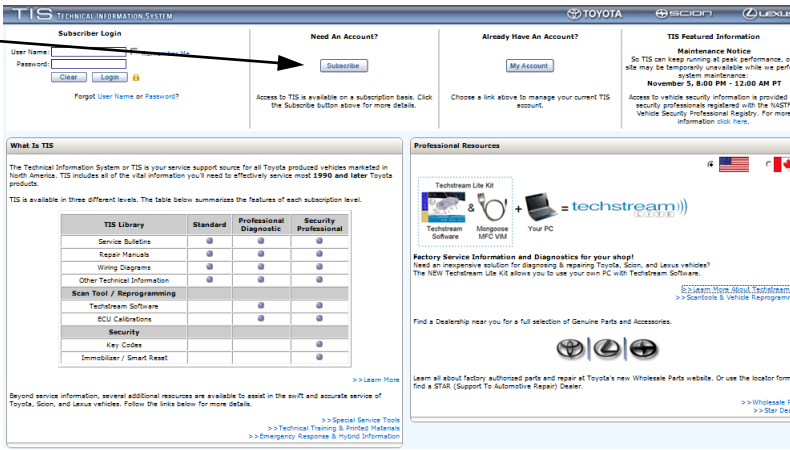
- Registration & Subscription (pg. 2-4)
- CUW / VUW Download & Installation (pg. 5-12)
- Toyota Reprogramming (pg. 13-22)

© 2006 - 2011 Dearborn Group, Inc.  
33604 West Eight Mile Road  
Farmington Hills, MI 48335  
Phone (248) 888-2000 • Fax (248) 888-9977

This document is copyrighted by Dearborn Group, Inc. Permission is granted to copy all and/or entire page portions of this manual, provided such copies are for use with the product provided by DG Technologies (Dearborn Group, Inc.) or any of its affiliates, and that each instance of DG Technologies, Dearborn Group, Inc., and our website [www.dgtech.com](http://www.dgtech.com) remains on all copies as on the original.

## Registration & Subscription (pg. 2-4)

**Subscribe**



**TIS TECHNICAL INFORMATION SYSTEM**

**Subscriber Login**

User Name:  Password:

Forgot User Name or Password?

**Need An Account?**

Access to TIS is available on a subscription basis. Click the Subscribe button above for more details.

**Already Have An Account?**

Choose a link above to manage your current TIS account.

**TIS Featured Information**

**Maintenance Notice**

So TIS can keep running at peak performance, our site may be temporarily unavailable while we perform system maintenance.

**November 5, 8:00 PM - 12:00 AM PT**

Access to vehicle security information is provided to security professionals registered with the NASTF Vehicle Security Professional Registry. For more information [click here](#).

**What is TIS**

The Technical Information System or TIS is your service support source for all Toyota produced vehicles marketed in North America. TIS includes all of the vital information you'll need to effectively service most 1990 and later Toyota products.

TIS is available in three different levels. The table below summarizes the features of each subscription level.

TIS Library	Standard	Professional Diagnostic	Security Professional
Service Bulletins	<input type="checkbox"/>	<input type="checkbox"/>	<input type="checkbox"/>
Repair Manuals	<input type="checkbox"/>	<input type="checkbox"/>	<input type="checkbox"/>
Wiring Diagrams	<input type="checkbox"/>	<input type="checkbox"/>	<input type="checkbox"/>
Other Technical Information	<input type="checkbox"/>	<input type="checkbox"/>	<input type="checkbox"/>
<b>Scan Tool / Reprogramming</b>			
Techstream Software	<input type="checkbox"/>	<input type="checkbox"/>	<input type="checkbox"/>
ECU Calibrations	<input type="checkbox"/>	<input type="checkbox"/>	<input type="checkbox"/>
<b>Security</b>			
Key Codes	<input type="checkbox"/>	<input type="checkbox"/>	<input type="checkbox"/>
Immobilizer / Smart Key Reset	<input type="checkbox"/>	<input type="checkbox"/>	<input type="checkbox"/>

[>>> Learn More](#)

Beyond service information, several additional resources are available to assist in the swift and accurate service of Toyota, Scion, and Lexus vehicles. Follow the links below for more details.

[>>> Special Service Tools](#)  
[>>> Technical Training & Printed Materials](#)  
[>>> Emergency Response & Triage Information](#)

**Professional Resources**

**Techstream Life Kit**

Techstream Software + Mongoose MFC VM = **techstream** (on your PC)

**Factory Service Information and Diagnostics for your shop!**

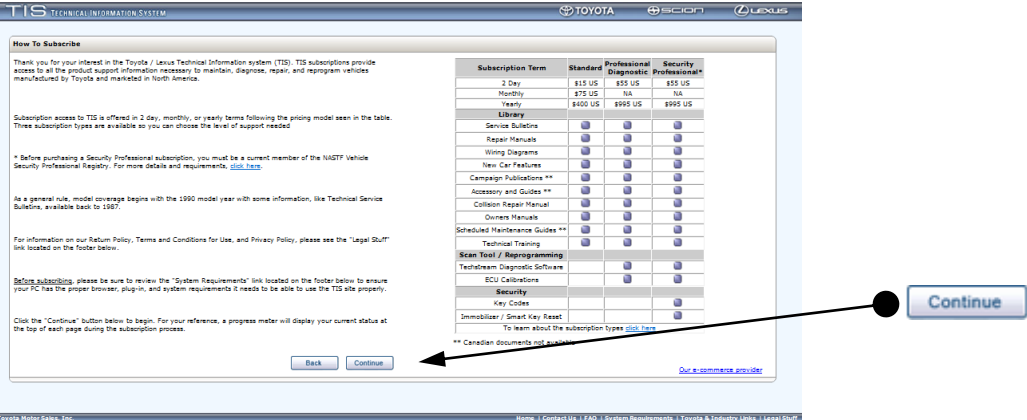
Need an inexpensive solution for diagnosing & repairing Toyota, Scion, and Lexus vehicles? The NEW Techstream Life Kit allows you to use your own PC with Techstream Software.

[>>> Learn More About Techstream Life Kit](#)  
[>>> Scan Tools & Vehicle Reprogramming](#)

Find a Dealership near you for a full selection of Genuine Parts and Accessories.

[>>> Wholesale Parts](#)  
[>>> Star Dealer](#)

- Go to and click on "Subscribe".



**TIS TECHNICAL INFORMATION SYSTEM**

**How To Subscribe**

Thank you for your interest in the Toyota / Lexus Technical Information system (TIS). TIS subscriptions provide access to all the product support information necessary to maintain, diagnose, repair, and reprogram vehicles manufactured by Toyota and marketed in North America.

Subscription access to TIS is offered in 2 day, monthly, or yearly terms following the pricing model seen in the table. Three subscription types are available as you can choose the level of support needed.

Subscription Term	Standard	Professional Diagnostic	Security Professional*
2 Day	\$15 US	\$55 US	\$55 US
Monthly	\$75 US	NA	NA
Yearly	\$400 US	\$995 US	\$995 US

\* Before purchasing a Security Professional subscription, you must be a current member of the NASTF Vehicle Security Professional Registry. For more details and requirements [click here](#).

As a general rule, model coverage begins with the 1990 model year with some information, like Technical Service Bulletins, available back to 1987.

For information on our Return Policy, Terms and Conditions for Use, and Privacy Policy, please see the "Legal Stuff" link located on the footer below.

Before subscribing, please be sure to review the "System Requirements" link located on the footer below to ensure your PC has the proper browser, plug-in, and system requirements it needs to be able to use the TIS site properly.

Click the "Continue" button below to begin. For your reference, a progress meter will display your current status at the top of each page during the subscription process.

**Subscription Term**

☐ Yes, I have a TIS Test Drive Card.  
 If you do not have a TIS Test Drive card, please continue with your subscription details.

Subscription access to TIS is offered in 2 day, monthly, or yearly intervals following the rate schedule noted below.

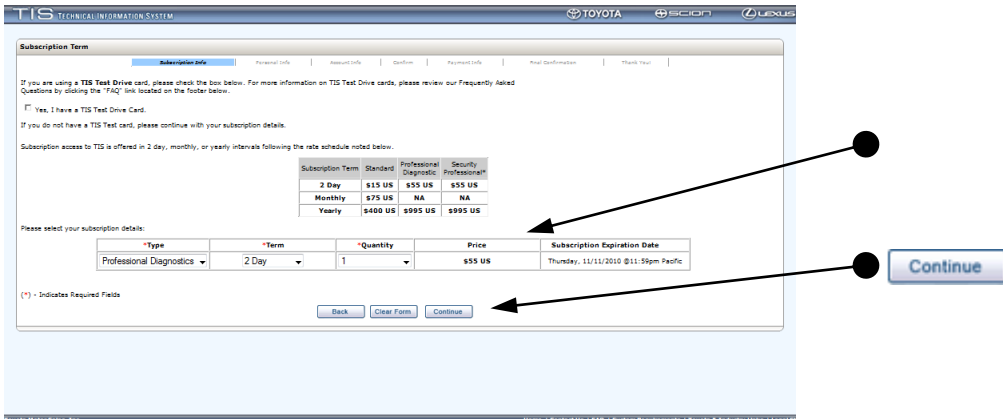
Subscription Term	Standard	Professional Diagnostic	Security Professional
2 Day	\$15 US	\$55 US	\$55 US
Monthly	\$75 US	NA	NA
Yearly	\$400 US	\$995 US	\$995 US

Please select your subscription details:

Type	Term	Quantity	Price	Subscription Expiration Date
Professional Diagnostics	2 Day	1	\$55 US	Thursday, 11/11/2010 @ 11:59pm Pacific

(\*) - Indicates Required Fields

- Read and review various options and click on "Continue".



**TIS TECHNICAL INFORMATION SYSTEM**

**Subscription Term**

☐ Yes, I have a TIS Test Drive Card.  
 If you do not have a TIS Test Drive card, please continue with your subscription details.

Subscription access to TIS is offered in 2 day, monthly, or yearly intervals following the rate schedule noted below.

Subscription Term	Standard	Professional Diagnostic	Security Professional
2 Day	\$15 US	\$55 US	\$55 US
Monthly	\$75 US	NA	NA
Yearly	\$400 US	\$995 US	\$995 US

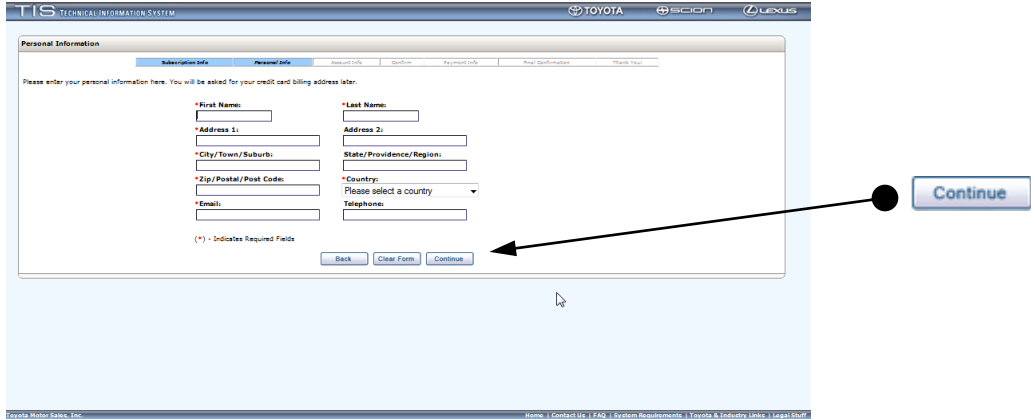
Please select your subscription details:

Type	Term	Quantity	Price	Subscription Expiration Date
Professional Diagnostics	2 Day	1	\$55 US	Thursday, 11/11/2010 @ 11:59pm Pacific

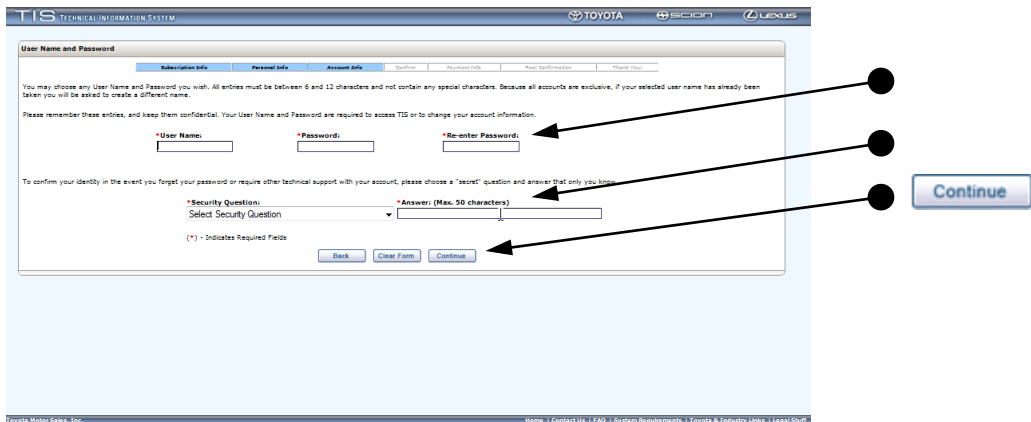
(\*) - Indicates Required Fields

- Select from the 2 term options under "Professional Diagnostics" and click on "Continue".

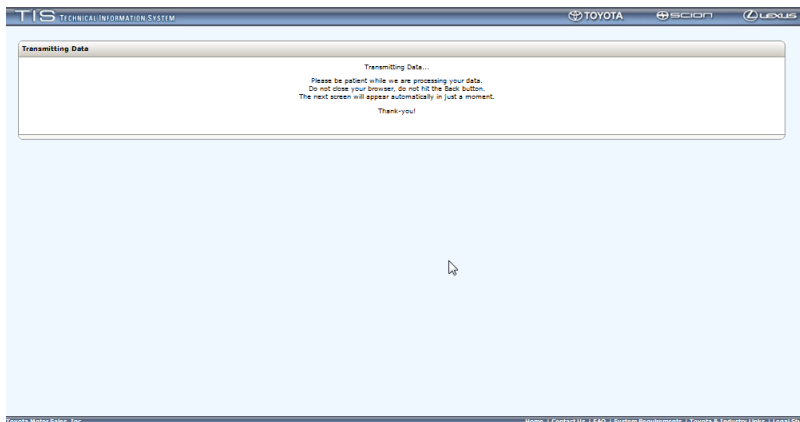
This document is copyrighted by Dearborn Group, Inc. Permission is granted to copy all and/or entire page portions of this manual, provided such copies are for use with the product provided by DG Technologies (Dearborn Group, Inc.) or any of its affiliates, and that each instance of DG Technologies, Dearborn Group, Inc., and our website [www.dgtech.com](http://www.dgtech.com) remains on all copies as on the original.



- Fill in required information and click on “Continue”.

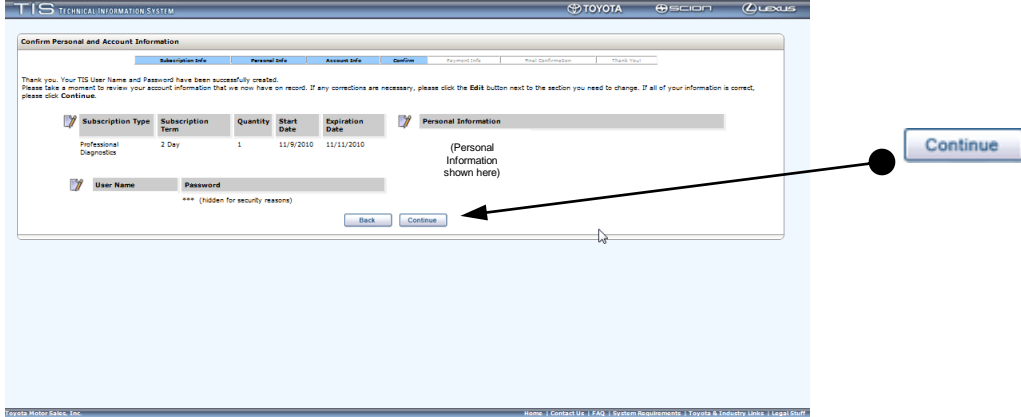


- Create “Account Info” by filling in the appropriate information as requested and click on “Continue”.

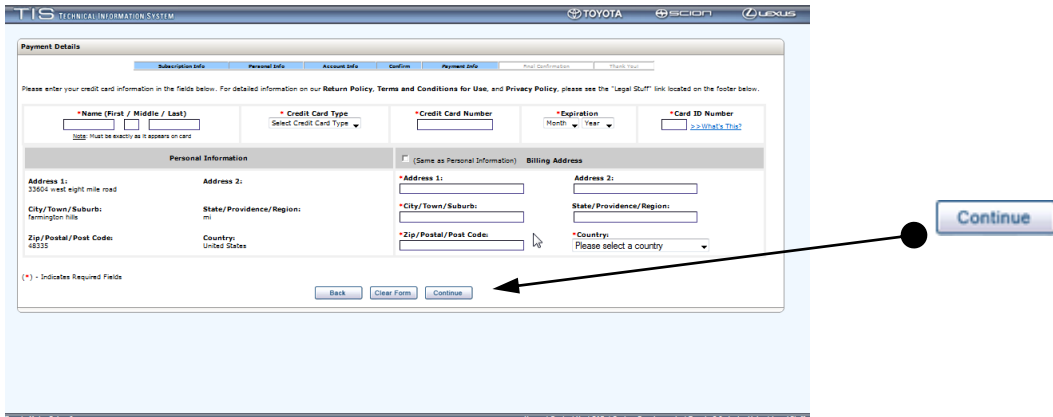


- Wait...

This document is copyrighted by Dearborn Group, Inc. Permission is granted to copy all and/or entire page portions of this manual, provided such copies are for use with the product provided by DG Technologies (Dearborn Group, Inc.) or any of its affiliates, and that each instance of DG Technologies, Dearborn Group, Inc., and our website [www.dgtech.com](http://www.dgtech.com) remains on all copies as on the original.



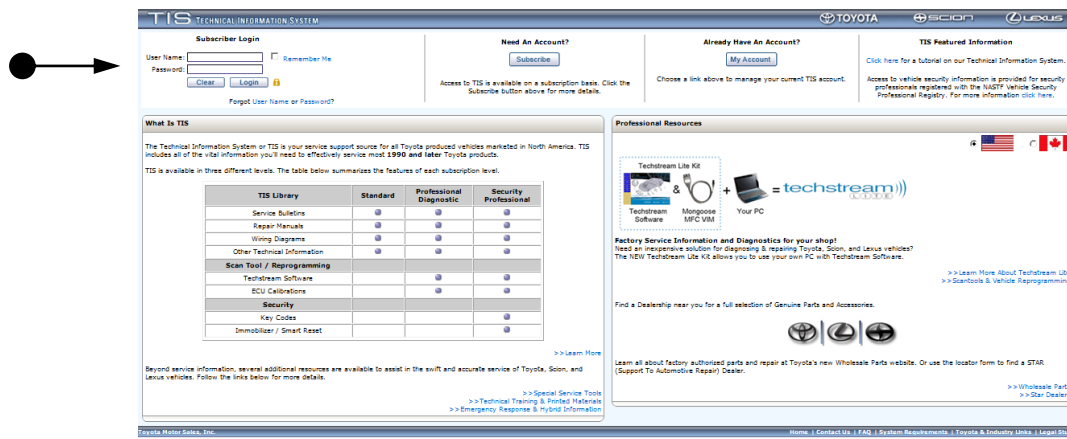
- Review and confirm information provided. Click “Continue”.



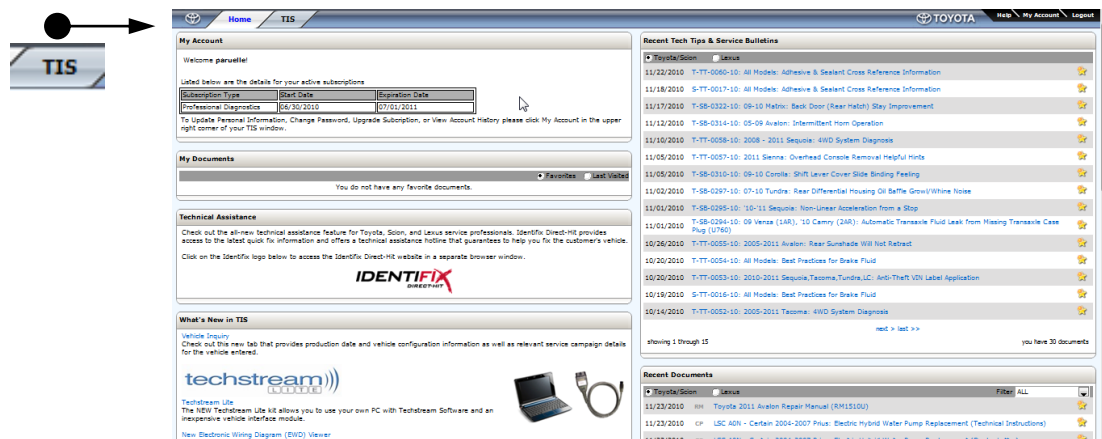
- Fill out required information and click on “Continue”. Once processed, an email confirming the subscription will be sent to the address provided.

This document is copyrighted by Dearborn Group, Inc. Permission is granted to copy all and/or entire page portions of this manual, provided such copies are for use with the product provided by DG Technologies (Dearborn Group, Inc.) or any of its affiliates, and that each instance of DG Technologies, Dearborn Group, Inc., and our website [www.dgtech.com](http://www.dgtech.com) remains on all copies as on the original.

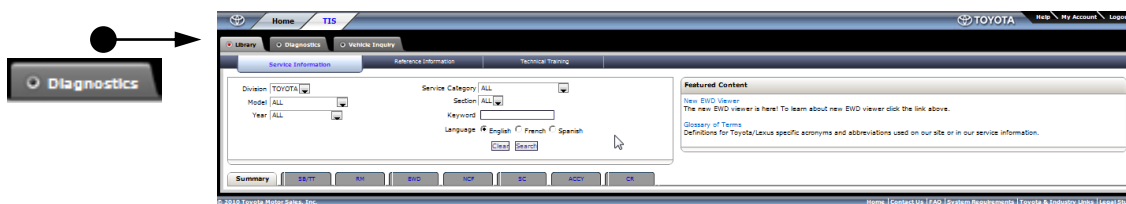
## Software download and CUW/VUW installation (pg. 5-8)



- Sign into the Toyota Information System (TIS).



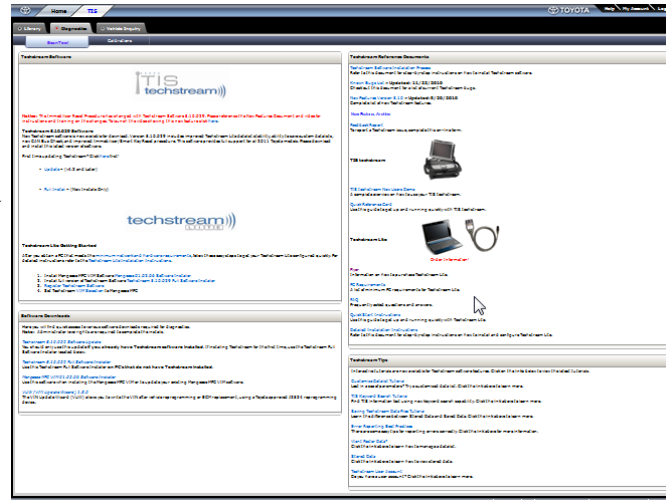
- Click on the "TIS" tab.



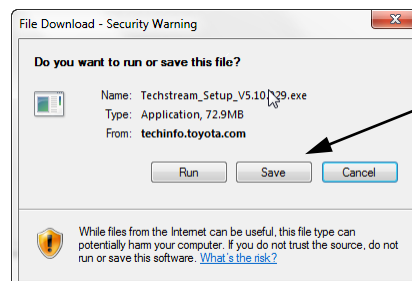
- Click on the "Diagnostics" tab.

This document is copyrighted by Dearborn Group, Inc. Permission is granted to copy all and/or entire page portions of this manual, provided such copies are for use with the product provided by DG Technologies (Dearborn Group, Inc.) or any of its affiliates, and that each instance of DG Technologies, Dearborn Group, Inc., and our website [www.dgtech.com](http://www.dgtech.com) remains on all copies as on the original.

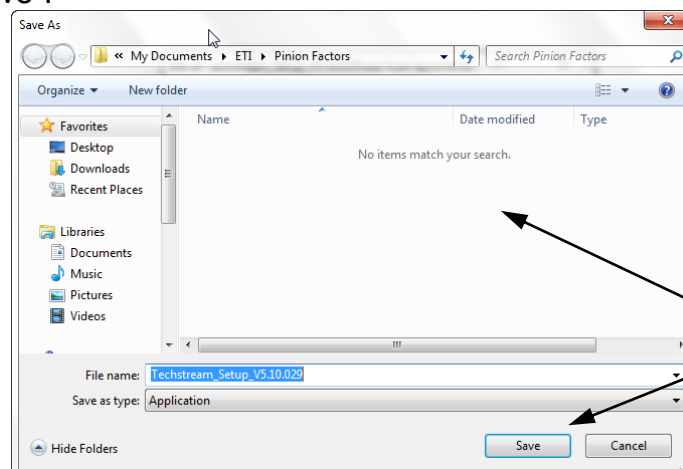
- Full Install - (New Installs Only)



- NOTE: Previous Toyota TIS users: it is recommended to uninstall your current version of the TIS and then proceed.
- Click on “Full Install”. CUW (Calibration Update Wizard) is included in this portion of the installation. VUW (VIN Update Wizard) installation is separate and shown further below.

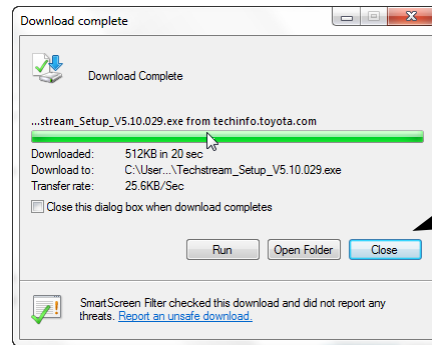


- Click on “Save”.

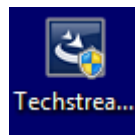


- It is recommended that you save it to your desktop. Click on “Desktop” and then “Save”.

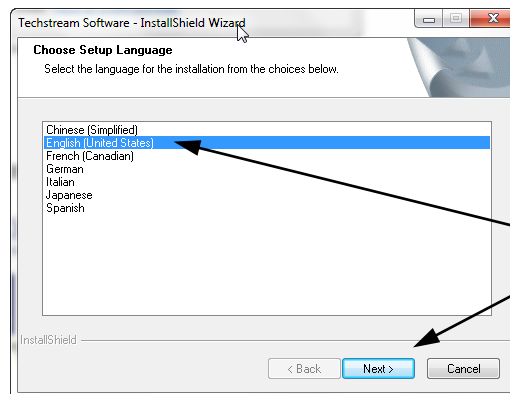
This document is copyrighted by Dearborn Group, Inc. Permission is granted to copy all and/or entire page portions of this manual, provided such copies are for use with the product provided by DG Technologies (Dearborn Group, Inc.) or any of its affiliates, and that each instance of DG Technologies, Dearborn Group, Inc., and our website [www.dgtech.com](http://www.dgtech.com) remains on all copies as on the original.



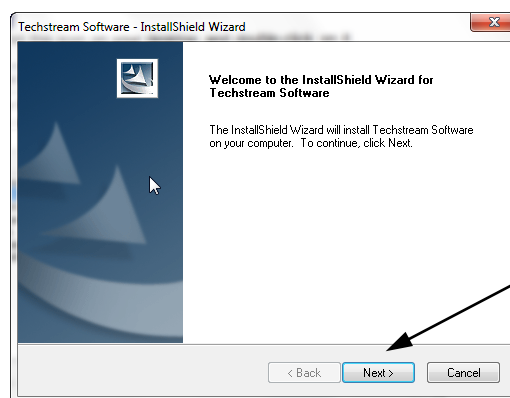
- Download complete. Click on “Close”.



- Find this icon on your desktop and double-click on it.

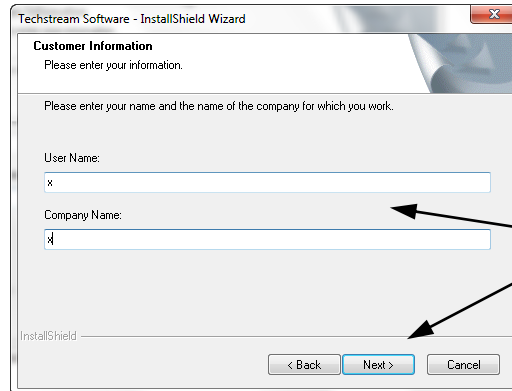


- Select language preference and click “Next”.

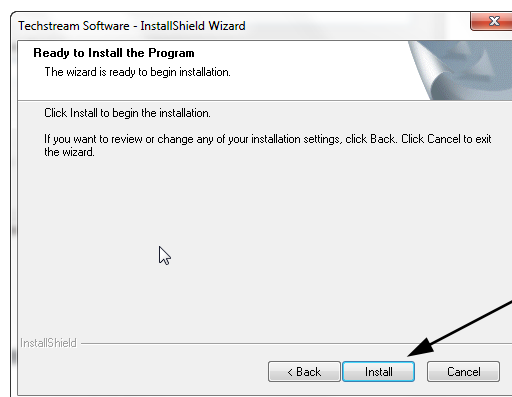


- Click on “Next”.

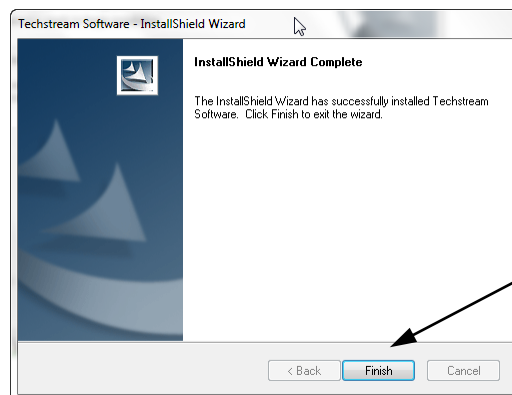
This document is copyrighted by Dearborn Group, Inc. Permission is granted to copy all and/or entire page portions of this manual, provided such copies are for use with the product provided by DG Technologies (Dearborn Group, Inc.) or any of its affiliates, and that each instance of DG Technologies, Dearborn Group, Inc., and our website [www.dgtech.com](http://www.dgtech.com) remains on all copies as on the original.



- Verify/input information and click “Next”.



- Click on “Install” and wait...

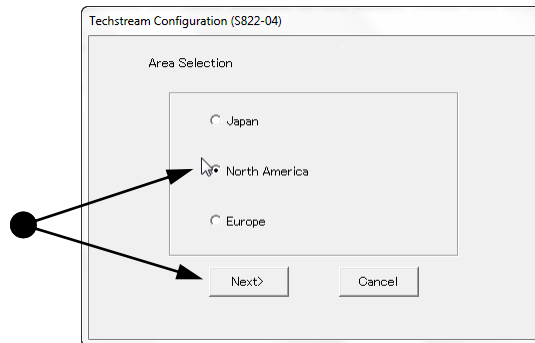


- Installation complete. Click “Finish”.

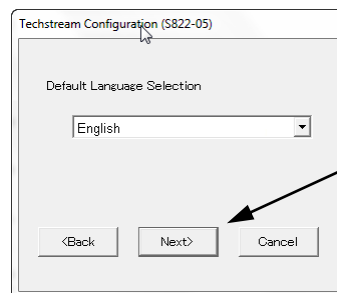




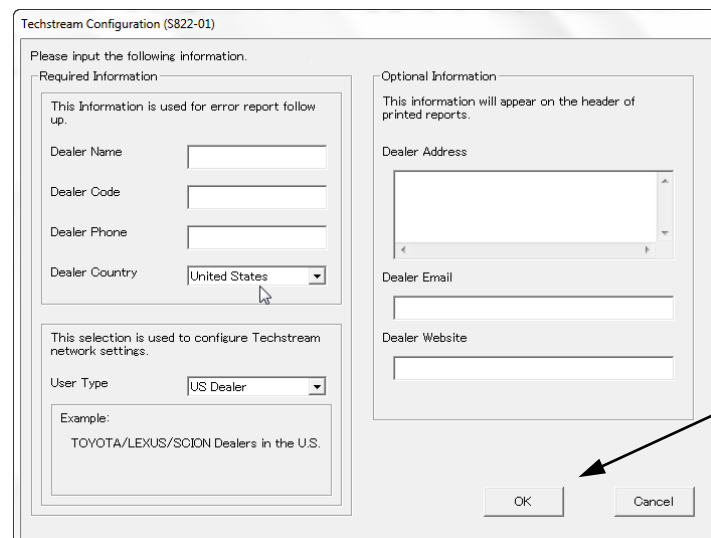
- This new Techstream icon will be displayed on your desktop. Double-click on it.



- Select area and click on “Next”.



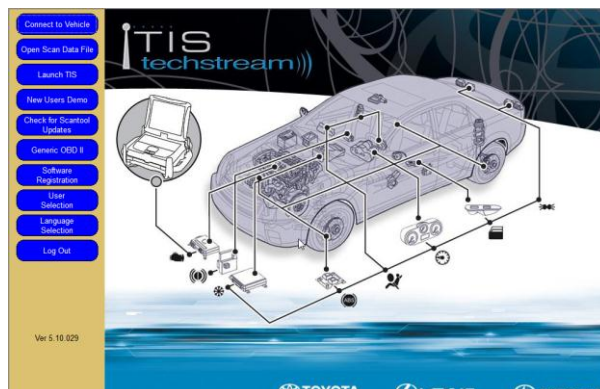
- Make appropriate selection and click “Next”.



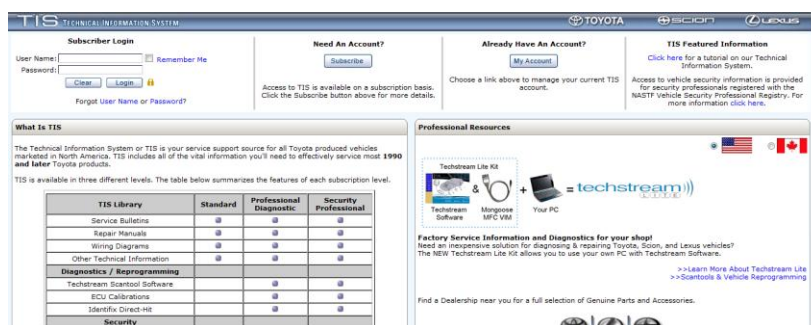
- Fill in appropriate information and click “OK”.

This document is copyrighted by Dearborn Group, Inc. Permission is granted to copy all and/or entire page portions of this manual, provided such copies are for use with the product provided by DG Technologies (Dearborn Group, Inc.) or any of its affiliates, and that each instance of DG Technologies, Dearborn Group, Inc., and our website [www.dgtech.com](http://www.dgtech.com) remains on all copies as on the original.

Software  
Registration

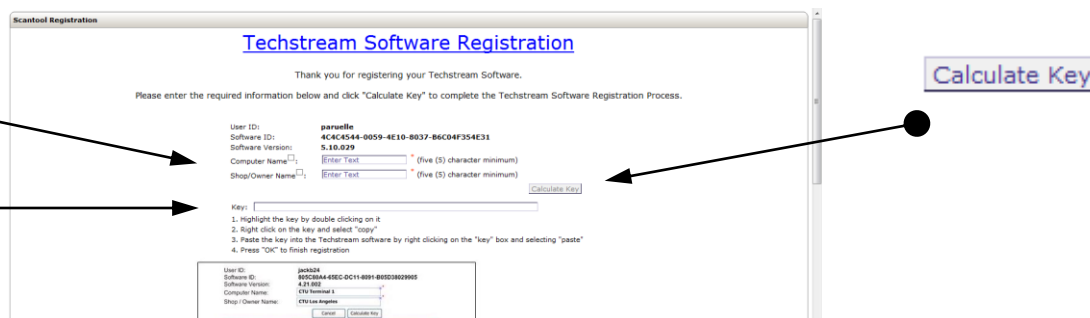


- Click on “Software Registration”.



- This window will open automatically. Sign into TIS.

Computer Name:  
Shop/Owner Name:



**Techstream Software Registration**

Thank you for registering your Techstream Software.

Please enter the required information below and click "Calculate Key" to complete the Techstream Software Registration Process.

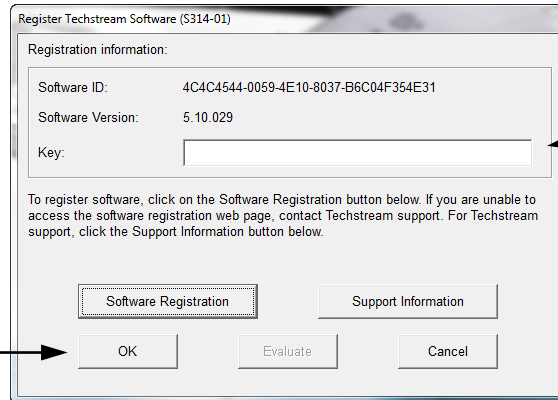
User ID: paroville  
Software ID: 4C4C4544-8059-4E10-8037-86C04F354E31  
Software Version: 5.10.029  
Computer Name:  \* (five (5) character minimum)  
Shop/Owner Name:  \* (five (5) character minimum)

Key:

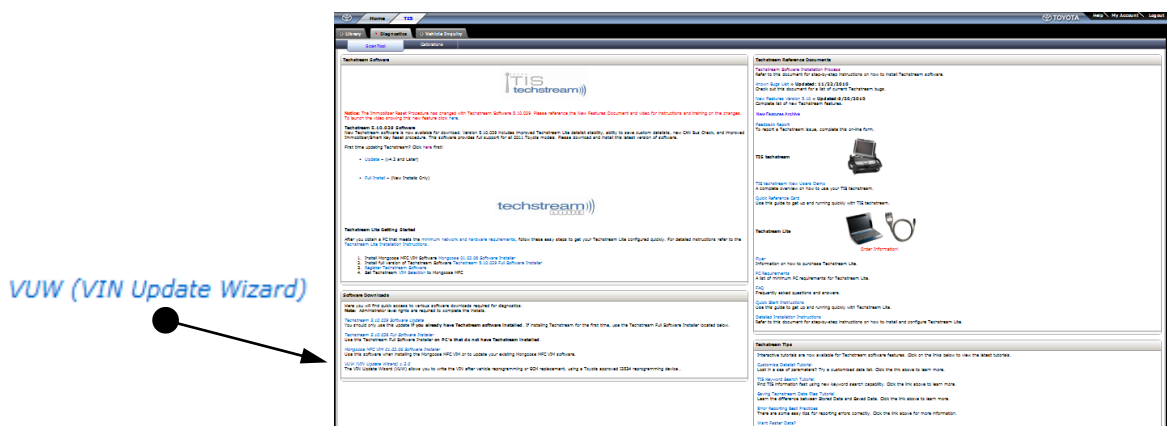
1. Highlight the key by double clicking on it.  
2. Right click on the key and select "copy".  
3. Paste the key into the Techstream software by right clicking on the "key" box and selecting "paste".  
4. Press "OK" to finish registration.

User ID: paroville  
Software ID: 88C2B8A4-83EC-DC11-8091-005036029905  
Software Version: 4.21.002  
Computer Name: CTR Terminal 1  
Shop / Owner Name: CTR Los Angeles

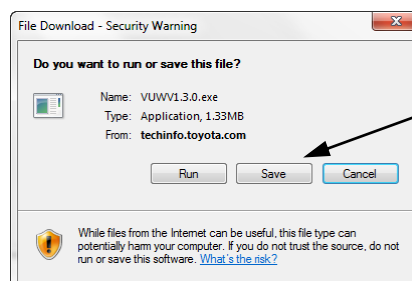
- Input an appropriate “Computer Name” and “Shop/Owner Name” and then click on “Calculate Key”.
- A new “Key” will be displayed. Double-click on the “Key” string, right click and select “copy”. Then go back to the “Register Techstream Software” screen.



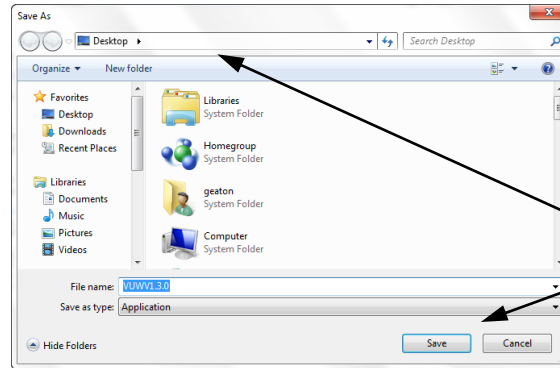
- Click in blank “Key” area, right-click and select “Paste”, and then “OK”. Close out the “TIS Techstream” window.



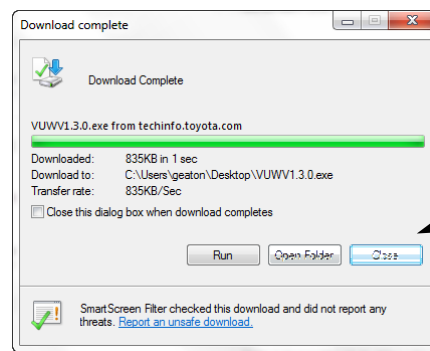
- To install the “VUW”, go back to the web browser, which should still be open, and under the “TIS” and “Diagnostics” tabs, find the “VUW” install program and click on it.



- Click on “Save”.



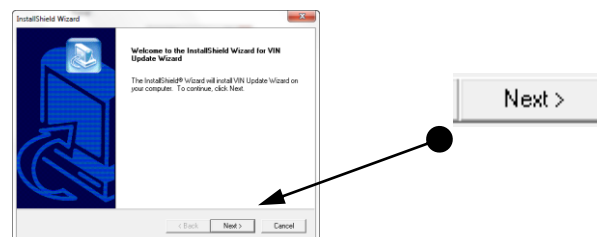
- It is recommended that you save it to your desktop. Click on “Desktop” and then “Save”.



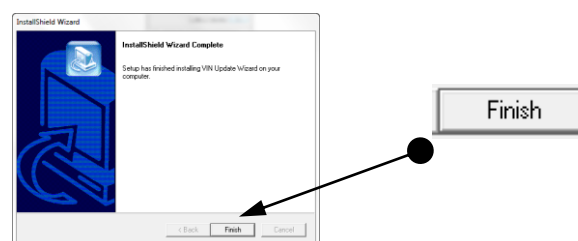
- Click on “Close”.



- Locate this icon on the Desktop and double-click on it.



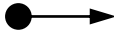
- Click on “Next”.



This document is copyrighted by Dearborn Group, Inc. Permission is granted to copy all and/or entire page portions of this manual, provided such copies are for use with the product provided by DG Technologies (Dearborn Group, Inc.) or any of its affiliates, and that each instance of DG Technologies, Dearborn Group, Inc., and our website [www.dgtech.com](http://www.dgtech.com) remains on all copies as on the original.

- Click on “Finish”.

## Toyota Programming



**TIS TECHNICAL INFORMATION SYSTEM**

**Subscriber Login**  
 User Name:  ☐ Remember Me  
 Password:   
  

**Need An Account?**  
  
 Access to TIS is available on a subscription basis. Click the Subscribe button above for more details.

**Already Have An Account?**  
  
 Choose a link above to manage your current TIS account.

**TIS Featured Information**  
 Click here for a tutorial on our Technical Information System.  
 Access to vehicle security information is provided for security professionals registered with the IATF Vehicle Security Professional Registry. For more information visit [IATF](#).

**What Is TIS**  
 The Technical Information System or TIS is your service support source for all Toyota produced vehicles marketed in North America. TIS includes all of the vital information you'll need to effectively service most 1990 and later Toyota products.  
 TIS is available in three different levels. The table below summarizes the features of each subscription level.

TIS Library	Standard	Professional Diagnostic	Security Professional
Service Bulletins	<input checked="" type="checkbox"/>	<input checked="" type="checkbox"/>	<input checked="" type="checkbox"/>
Repair Manuals	<input checked="" type="checkbox"/>	<input checked="" type="checkbox"/>	<input checked="" type="checkbox"/>
Wiring Diagrams	<input checked="" type="checkbox"/>	<input checked="" type="checkbox"/>	<input checked="" type="checkbox"/>
Other Technical Information	<input checked="" type="checkbox"/>	<input checked="" type="checkbox"/>	<input checked="" type="checkbox"/>
<b>Scan Tool / Reprogramming</b>			
Techstream Software		<input checked="" type="checkbox"/>	<input checked="" type="checkbox"/>
ECU Calibrations		<input checked="" type="checkbox"/>	<input checked="" type="checkbox"/>
<b>Security</b>			
Key Codes			<input checked="" type="checkbox"/>
Immobilizer / Smart Reset			<input checked="" type="checkbox"/>

[>> Learn More](#)

Beyond service information, several additional resources are available to assist in the swift and accurate service of Toyota, Scion, and Lexus vehicles. Follow the links below for more details.

[>> Special Service Tools](#)  
[>> Technical Training & Product Refresh](#)  
[>> Emergency Response & Hybrid Information](#)

**Professional Resources**

**Techstream Lite Kit**  
 Techstream Software + Mongoose MPC 100 = **techstream**  
 Your PC

**Factory Service Information and Diagnostics for your shop!**  
 Need an inexpensive solution for diagnosing & repairing Toyota, Scion, and Lexus vehicles? The NEW Techstream Lite kit allows you to use your own PC with Techstream Software.

[>> Learn How About Techstream Lite](#)  
[>> Scanbook & Vehicle Reprogramming](#)


Find a Dealership near you for a full selection of Genuine Parts and Accessories.

Learn all about factory authorized parts and repair at Toyota's new Wholesale Parts website. Or use the locator form to find a STAR (Support To Automotive Repair) Dealer.

[>> Wholesale Parts](#)  
[>> Star Dealers](#)

© 2010 Toyota Motor Sales, Inc. Home | Contact Us | FAQ | System Requirements | Toyota & Industry Links | Legal Stuff

- Sign into the Toyota Information System (TIS).



**TIS**

**My Account**  
 Welcome parvelli!  
 Listed below are the details for your active subscriptions:  

Subscription Type	Start Date	Expiration Date
Professional Diagnostic	04/30/2010	07/01/2011

 To Update Personal Information, Change Password, Upgrade Subscription, or View Account History please click My Account in the upper right corner of your TIS window.

**My Documents**  
 You do not have any favorite documents.

**Technical Assistance**  
 Check out the all-new technical assistance feature for Toyota, Scion, and Lexus service professionals. Identify Direct-Hi provides access to the latest quick fix information and offers a technical assistance hotline that guarantees to help you fix the customer's vehicle. Click on the Identify logo below to access the Identify Direct-Hi website in a separate browser window.

**What's New in TIS**  
 Vehicle Inquiry  
 Check out this new tab that provides production date and vehicle configuration information as well as relevant service campaign details for the vehicle entered.

**techstream**  
 The NEW Techstream Lite kit allows you to use your own PC with Techstream Software and an inexpensive vehicle interface module.  
[New Electronic Wiring Diagram \(EWD\) Viewer](#)


**Recent Tech Tips & Service Bulletins**  
 Toyota/Scion Lexus  
 11/22/2010 T-TT-0060-10: All Models: Adhesive & Sealant Cross Reference Information  
 11/18/2010 S-TT-0017-10: All Models: Adhesive & Sealant Cross Reference Information  
 11/17/2010 T-SB-0322-10: 09-10 Matrix: Back Door (Rear Hatch) Stay Improvement  
 11/12/2010 T-SB-0314-10: 05-09 Avalon: Intermittent Horn Operation  
 11/10/2010 T-TT-0058-10: 2008 - 2011 Sequoia: 4WD System Diagnosis  
 11/05/2010 T-TT-0057-10: 2011 Sienna: Overhead Console Removal Helpful Hints  
 11/05/2010 T-SB-0310-10: 09-10 Camille: Shift Lever Cover Slide Binding Fixing  
 11/02/2010 T-SB-0297-10: 07-10 Tundra: Rear Differential Housing Oil Baffle Growl/Whine Noise  
 11/01/2010 T-SB-0295-10: 10-12 Sequoia: Non-Linear Acceleration from a Stop  
 11/01/2010 T-SB-0294-10: 09 Venza (L4R), 10 Camry (2AR): Automatic Transaxle Fluid Leak from Missing Transaxle Case Plug (U780)  
 10/26/2010 T-TT-0055-10: 2005-2011 Avalon: Rear Sunshade Will Not Retract  
 10/20/2010 T-TT-0054-10: All Models: Best Practices for Brake Fluid  
 10/20/2010 T-TT-0053-10: 2010-2011 Sequoia/Tasoma/Tundra/LC: Anti-Theft VIN Label Application  
 10/19/2010 S-TT-0016-10: All Models: Best Practices for Brake Fluid  
 10/14/2010 T-TT-0052-10: 2005-2011 Tacoma: 4WD System Diagnosis

Showing 1 through 15 [next >](#) [last >>](#) you have 30 documents

**Recent Documents**  
 Toyota/Scion Lexus Filter: ALL  
 11/23/2010 HH Toyota 2011 Avalon Repair Manual (RM110U)  
 11/23/2010 CP USC ADR - Canfan 2004-2007 Prius: Electric Hybrid Water Pump Replacement (Technical Instructions)

© 2010 Toyota Motor Sales, Inc. Home | Contact Us | FAQ | System Requirements | Toyota & Industry Links | Legal Stuff

- Click on the “TIS” tab.



**Diagnostics**

**Service Information**  
 Division: TOYOTA Service Category: ALL  
 Model: ALL Section: ALL  
 Year: ALL Keyword:   
 Language: ☒ English ☐ French ☐ Spanish

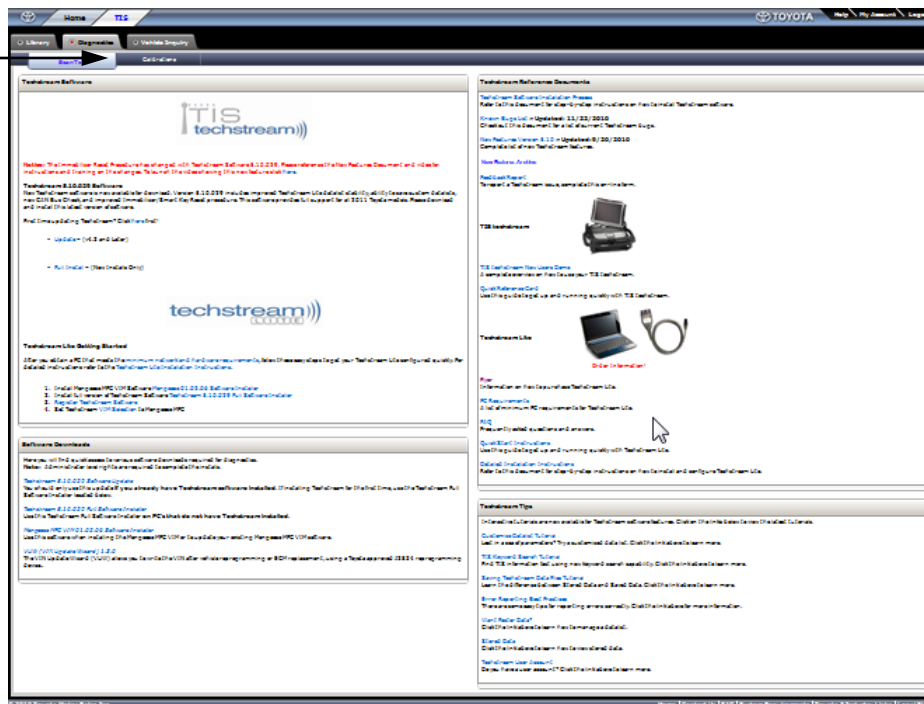
**Featured Content**  
 New EWD Viewer  
 The new EWD viewer is here! To learn about new EWD viewer click the link above.  
[Glossary of Terms](#)  
 Definitions for Toyota/Lexus specific acronyms and abbreviations used on our site or in our service information.

Summary

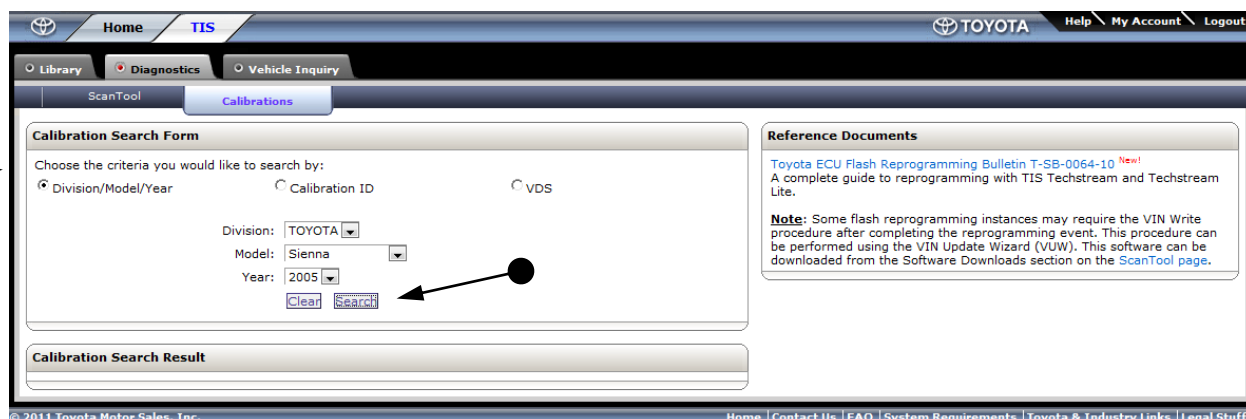
© 2010 Toyota Motor Sales, Inc. Home | Contact Us | FAQ | System Requirements | Toyota & Industry Links | Legal Stuff

- Click on the “Diagnostics” tab.

This document is copyrighted by Dearborn Group, Inc. Permission is granted to copy all and/or entire page portions of this manual, provided such copies are for use with the product provided by DG Technologies (Dearborn Group, Inc.) or any of its affiliates, and that each instance of DG Technologies, Dearborn Group, Inc., and our website [www.dgtech.com](http://www.dgtech.com) remains on all copies as on the original.

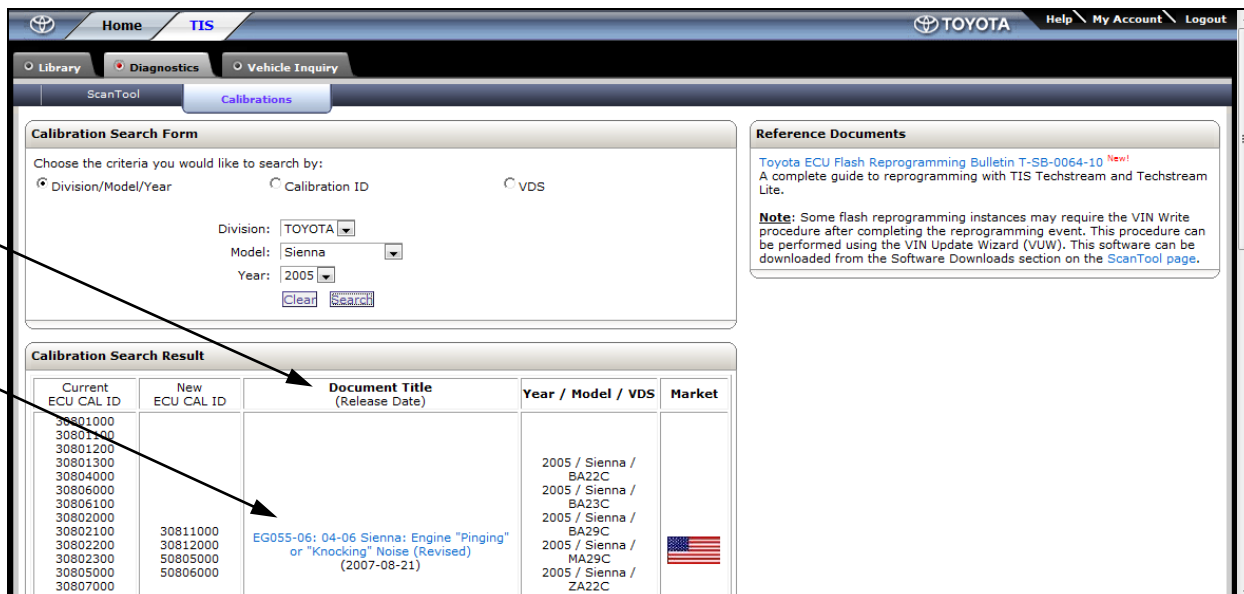


- Click on the "Calibrations" tab.



- Select the method to identify the vehicle and provide the required information, then click on "Search".

This document is copyrighted by Dearborn Group, Inc. Permission is granted to copy all and/or entire page portions of this manual, provided such copies are for use with the product provided by DG Technologies (Dearborn Group, Inc.) or any of its affiliates, and that each instance of DG Technologies, Dearborn Group, Inc., and our website [www.dgtech.com](http://www.dgtech.com) remains on all copies as on the original.




**Calibration Search Form**

Choose the criteria you would like to search by:

☒ Division/Model/Year ☐ Calibration ID ☐ VDS

Division:  Model:  Year:

**Calibration Search Result**

Current ECU CAL ID	New ECU CAL ID	Document Title (Release Date)	Year / Model / VDS	Market
30801000				
30801100				
30801200				
30801300			2005 / Sienna / BA22C	
30804000			2005 / Sienna / BA23C	
30806000			2005 / Sienna / BA29C	
30806100			2005 / Sienna / MA29C	
30802000	30811000	EG055-06: 04-06 Sienna: Engine "Pinging" or "Knocking" Noise (Revised) (2007-08-21)	2005 / Sienna / ZA22C	
30802100	30812000			
30802200	50805000			
30802300	50806000			
30805000				
30807000				
30807100				

**Reference Documents**

[Toyota ECU Flash Reprogramming Bulletin T-SB-0064-10](#) New!  
 A complete guide to reprogramming with TIS Techstream and Techstream Lite.

**Note:** Some flash reprogramming instances may require the VIN Write procedure after completing the reprogramming event. This procedure can be performed using the VIN Update Wizard (VUW). This software can be downloaded from the Software Downloads section on the [ScanTool](#) page.

- Scroll through the listing of available updates. Read and select (click on) the applicable "Document Title".

ENGINE "PINGING" OR "KNOCKING" NOISE – EG055-06 Revised

September 7, 2006

Calibration  
Identification  
Chart

MODEL	MODEL YEAR	DRIVETRAIN	ECM (CPU)	PREVIOUS CALIBRATION ID	NEW CALIBRATION ID
Sienna	2004 – 2006	2WD	Main	30801000	<a href="#">30811000</a>
				30801100	
				30801200	
				30801300	
				30804000	
				30806000	
		4WD	Main	30806100	<a href="#">30812000</a>
				50801000	
				50801100	
				50803000	
				30802000	
				30802100	
4WD	Sub	30802200	<a href="#">50805000</a>		
		30802300			
		30805000			
		30807000			
		30807100			
		50802000			
4WD	Sub	50802100	<a href="#">50806000</a>		
		50804000			

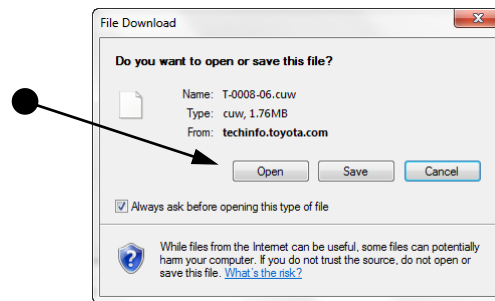
**NOTE:**

- Calibration files displayed on the Diagnostic Tester use the following abbreviations:
  - 2WD = Front Wheel Drive
  - 4WD = All Wheel Drive
- 2004 – 2005 model year Sienna vehicles, which have been flash reprogrammed using the procedures in this TSB will contain upgraded 2006 model year OBD II

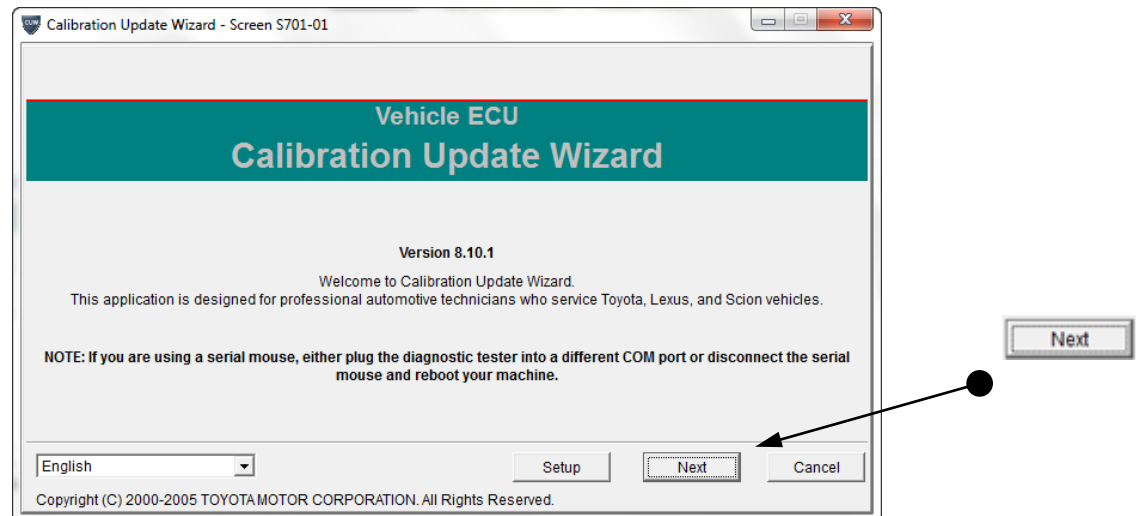
- The applicable Technical Service Bulletin (TSB) will open in a new window. Scroll down to the available "New Calibration ID" and click on the appropriate Calibration.

This document is copyrighted by Dearborn Group, Inc. Permission is granted to copy all and/or entire page portions of this manual, provided such copies are for use with the product provided by DG Technologies (Dearborn Group, Inc.) or any of its affiliates, and that each instance of DG Technologies, Dearborn Group, Inc., and our website [www.dgtech.com](http://www.dgtech.com) remains on all copies as on the original.

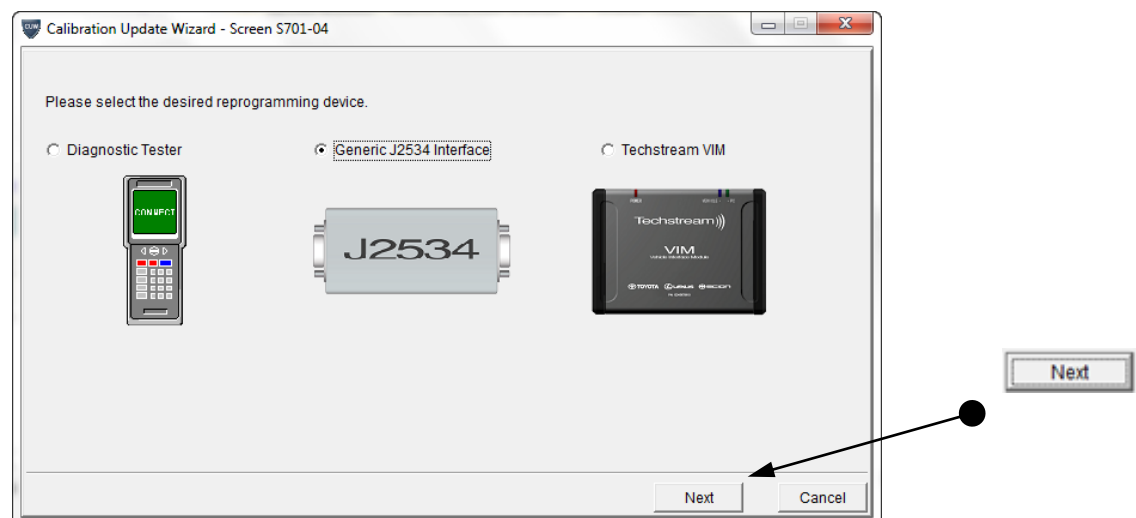




- Click on “Open” to launch the “Calibration Update Wizard (CUW)”.



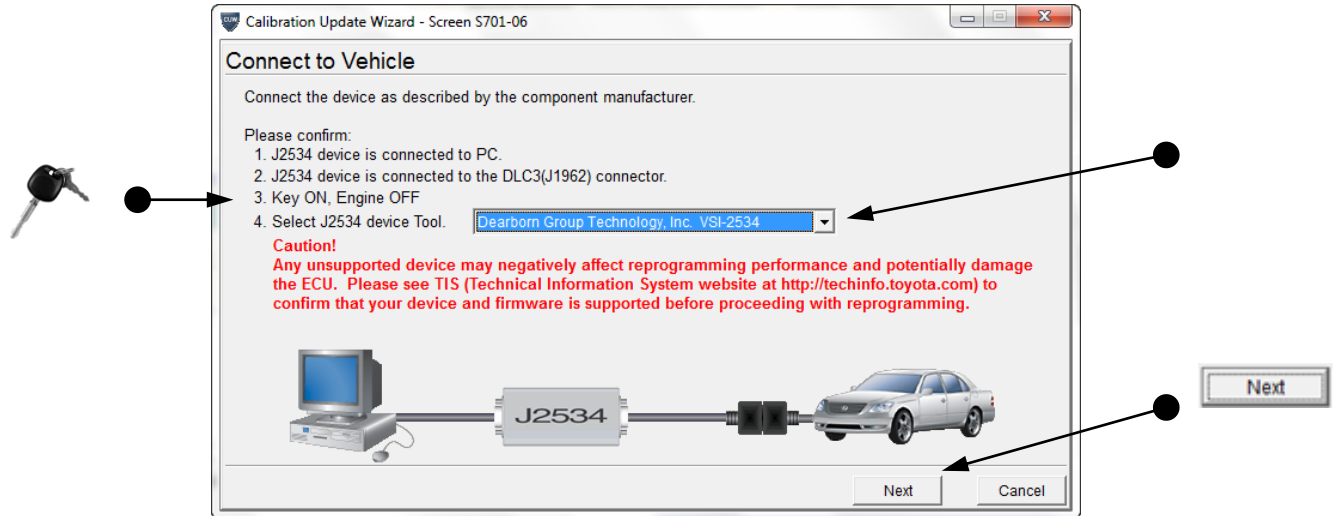
- Click on “Next”.



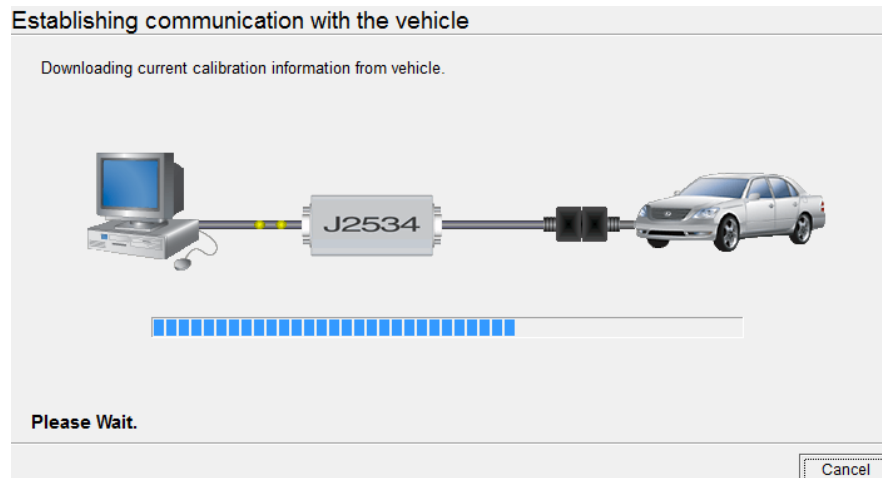
- Select “Generic J2534 Interface” and then “Next”.

This document is copyrighted by Dearborn Group, Inc. Permission is granted to copy all and/or entire page portions of this manual, provided such copies are for use with the product provided by DG Technologies (Dearborn Group, Inc.) or any of its affiliates, and that each instance of DG Technologies, Dearborn Group, Inc., and our website [www.dgtech.com](http://www.dgtech.com) remains on all copies as on the original.

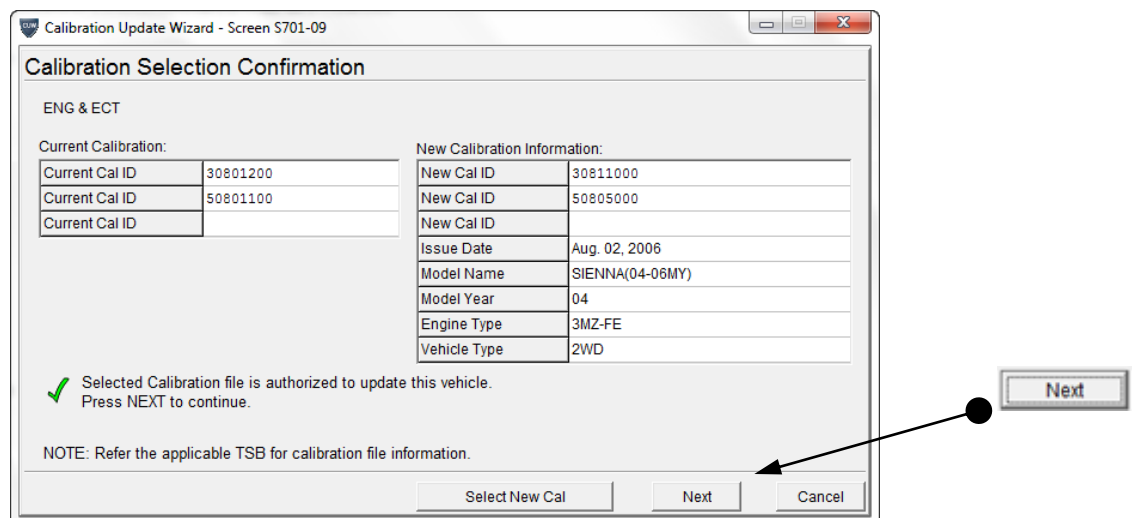




- Turn Key “ON”, select “Dearborn Group Technology, Inc. VSI-2534” and click on “Next”.

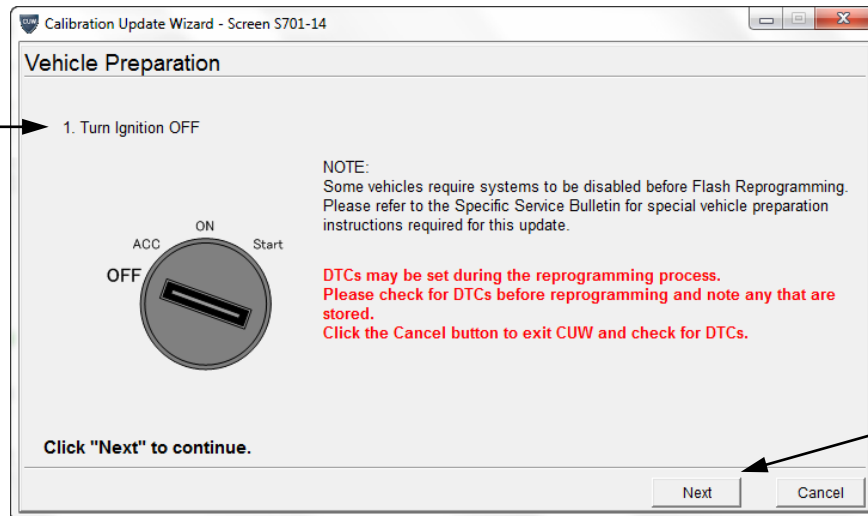


- Just wait...

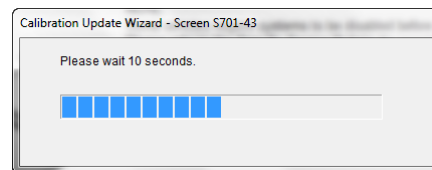


- Review and click on “Next” to continue.

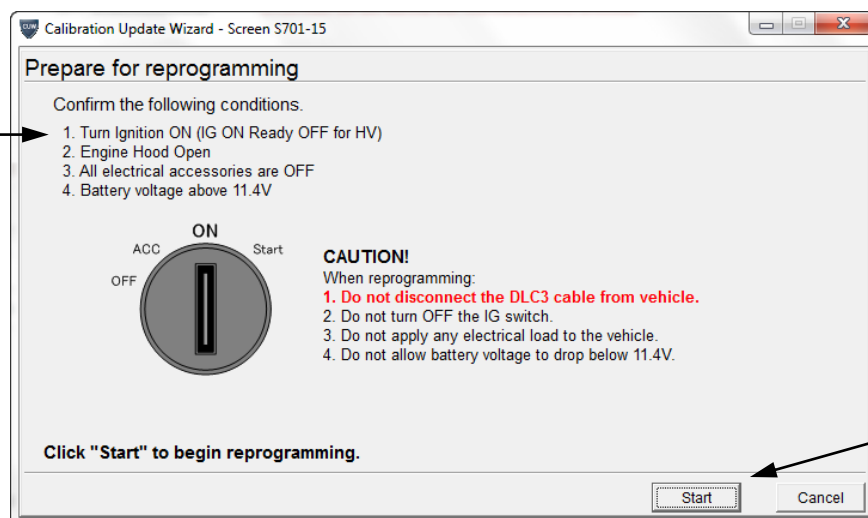
This document is copyrighted by Dearborn Group, Inc. Permission is granted to copy all and/or entire page portions of this manual, provided such copies are for use with the product provided by DG Technologies (Dearborn Group, Inc.) or any of its affiliates, and that each instance of DG Technologies, Dearborn Group, Inc., and our website [www.dgtech.com](http://www.dgtech.com) remains on all copies as on the original.



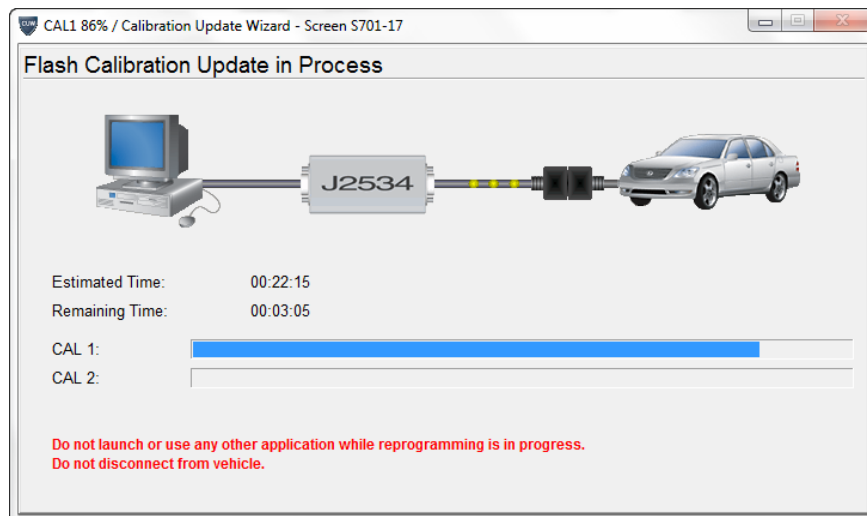
- Turn ignition OFF and click on “Next”.



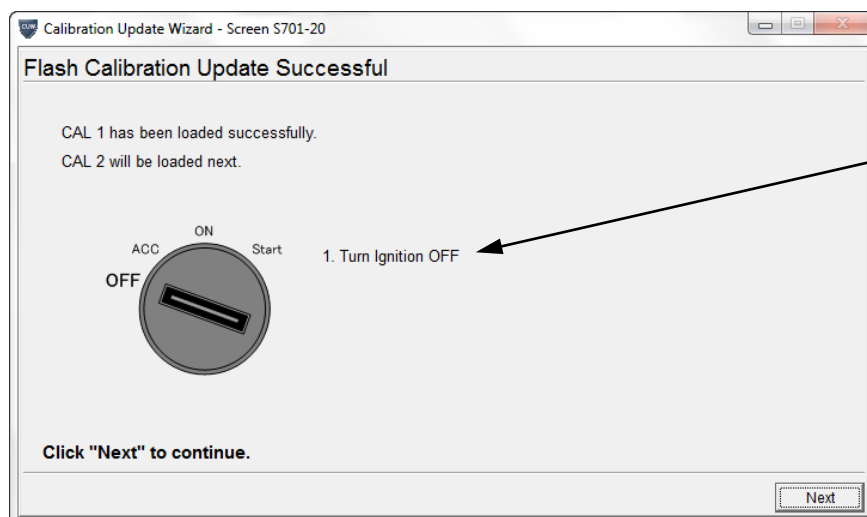
- Wait...



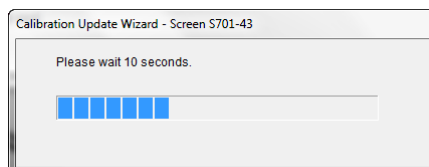
- Read information, turn ignition ON and click on “Start”.



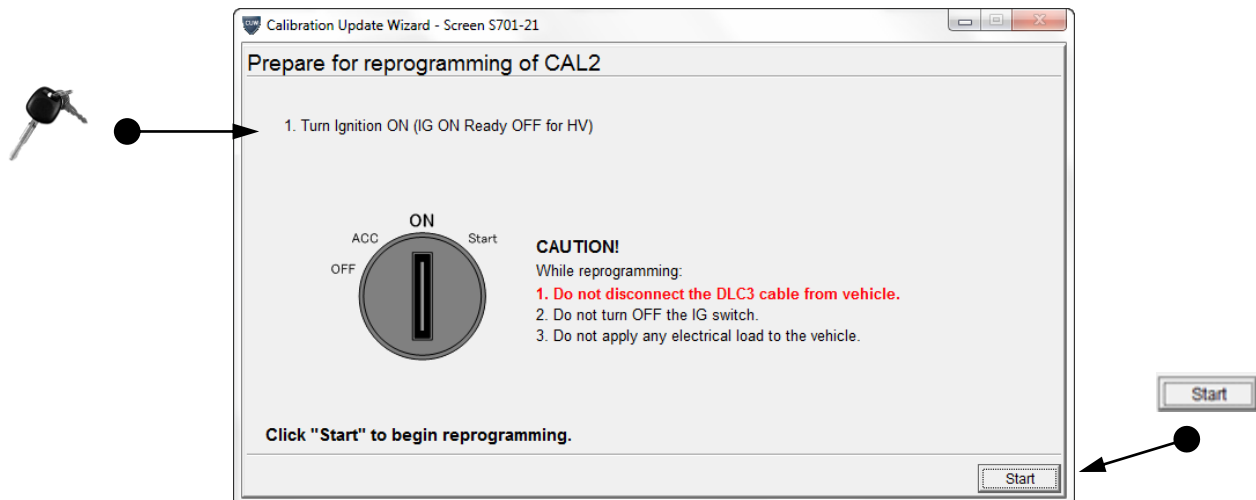
- Flashing...



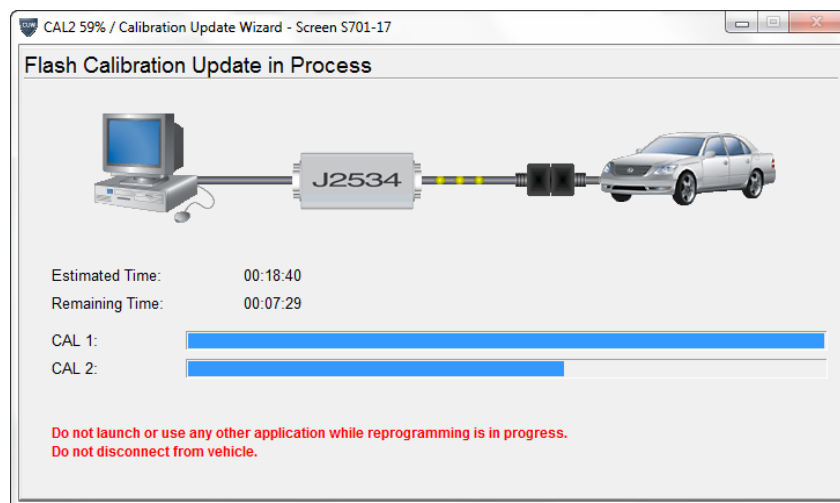
- Turn ignition "OFF"... (In this particular Flash event, there are 2 calibrations that need to be Flashed.)



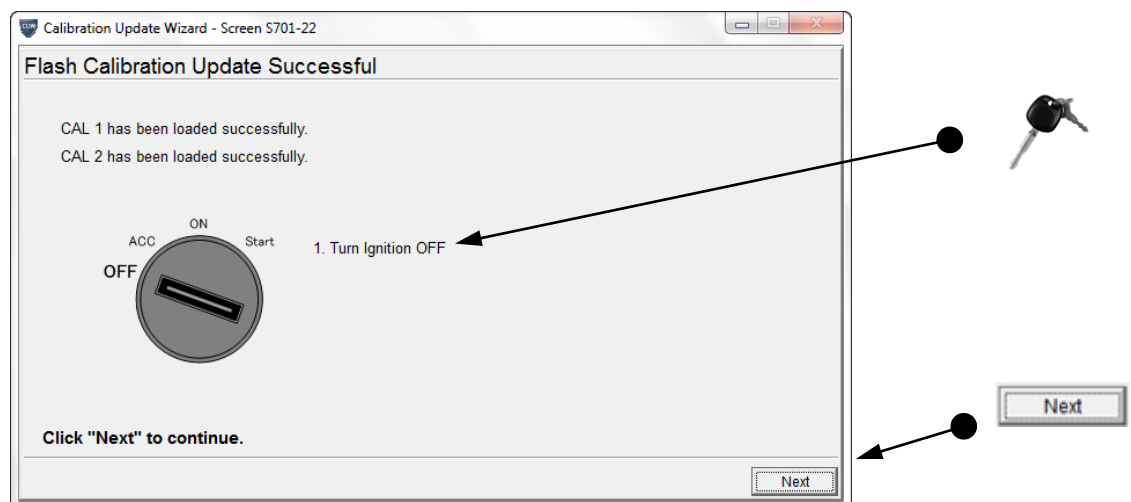
- Wait...



- Turn Ignition “ON” and then click on “Start”.

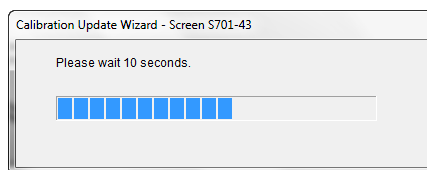


- Flashing 2<sup>nd</sup> calibration...

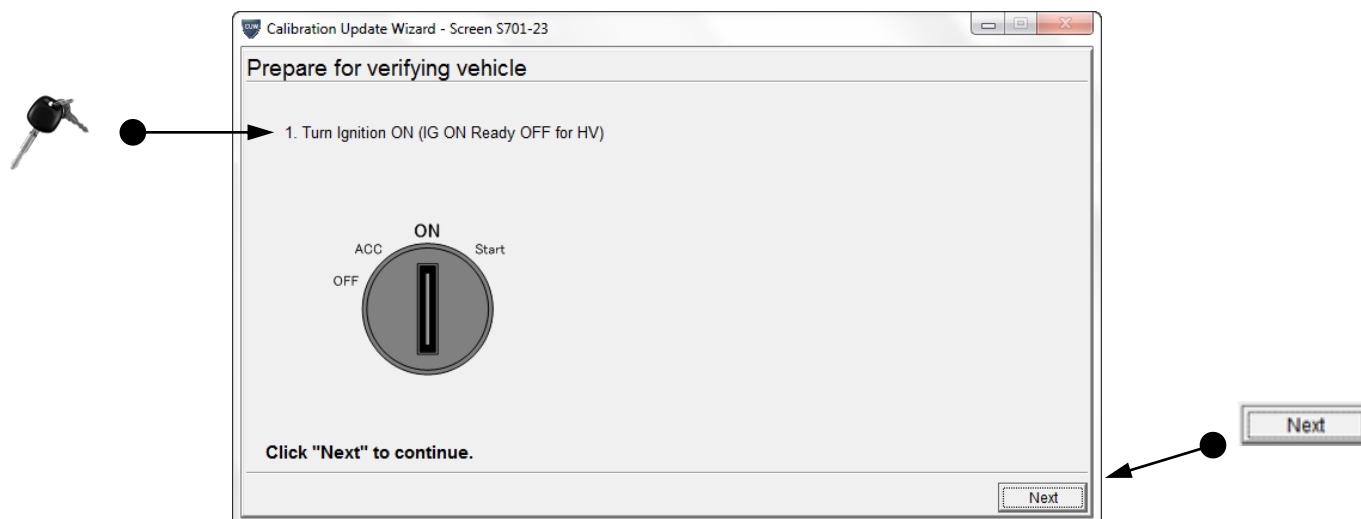


- Turn ignition “OFF” and click on “Next”.

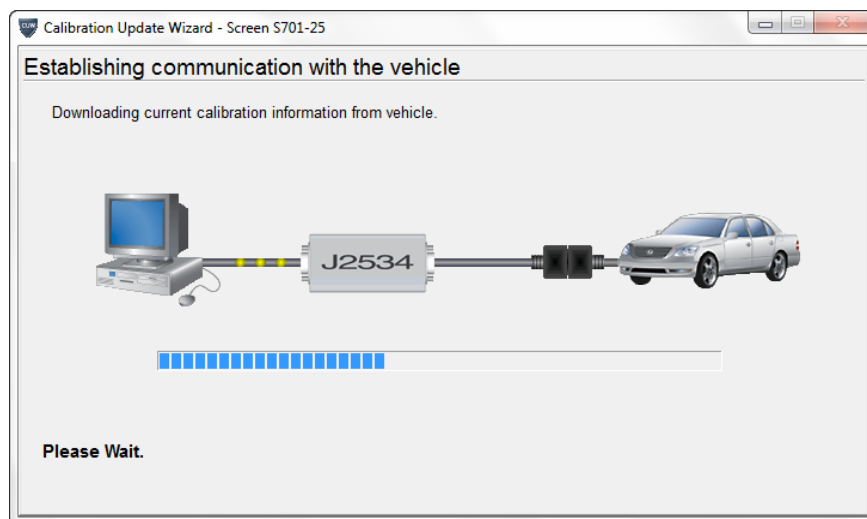
This document is copyrighted by Dearborn Group, Inc. Permission is granted to copy all and/or entire page portions of this manual, provided such copies are for use with the product provided by DG Technologies (Dearborn Group, Inc.) or any of its affiliates, and that each instance of DG Technologies, Dearborn Group, Inc., and our website [www.dgtech.com](http://www.dgtech.com) remains on all copies as on the original.



- Wait...

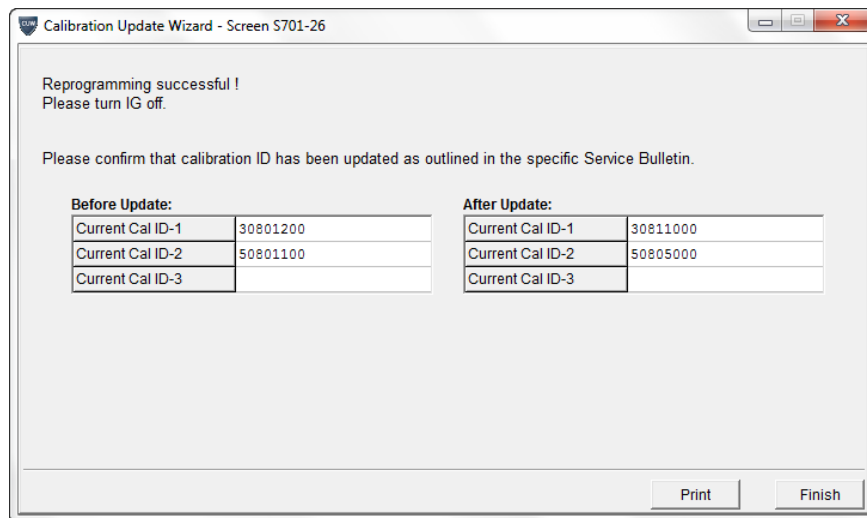


- Turn Ignition “ON” and then click on “Start”.



- Wait...

This document is copyrighted by Dearborn Group, Inc. Permission is granted to copy all and/or entire page portions of this manual, provided such copies are for use with the product provided by DG Technologies (Dearborn Group, Inc.) or any of its affiliates, and that each instance of DG Technologies, Dearborn Group, Inc., and our website [www.dgtech.com](http://www.dgtech.com) remains on all copies as on the original.



- “Reprogramming successful!” Click on “Finish”.