

DG Assist User Manual

Foreword

This document describes Dearborn Group's "DG Assist" to be used with DG-manufactured J2534 compliant devices and provides additional functionalities as described in this document.

DG Assist Driver Version:	x.xx.xx
DG Assist Firmware Version:	x.xxx.xxx
Document Revision:	1.0
Document Release:	x/xx/13

Permission is granted to copy any or all portions of this manual, provided that such copies are for use with DG J2534-compliant products and that "© 2013 Dearborn Group, Inc.", (herein referred to as "Dearborn Group", "DG Technologies", or "DG"), remains on all copies.

The accompanying software, provided for use with other DG J2534 products are also copyrighted. Permission is granted to copy this software for back-up purposes only.

IMPORTANT

To ensure your success with this product, it is essential that you read this document carefully before using the software.

Damage caused by misuse of the software is not covered under product warranty. When using this guide, please remember the following:

- ❑ This guide may be changed, in whole or in part, without notice.
- ❑ DG assumes no responsibility for any damage resulting from the use of this software and associated hardware.
- ❑ Specifications presented herein are provided for illustration purposes only and may not accurately represent the latest revisions of hardware, software or cabling.
- ❑ No license is granted, by implication or otherwise, for any patents or other rights of DG or of any third party.

DG® logo is a registered trademark of Dearborn Group, Inc. Other products that may be referenced in this manual are trademarks of their respective manufacturers.

© 2006 - 2013 Dearborn Group, Inc.
DG Technologies
33604 West Eight Mile Road
Farmington Hills, MI 48335
Phone (248) 888-2000
Fax (248) 888-9977
www.dgtech.com
sales@dgtech.com
techsupp@dgtech.com

Table of Contents

Table of Contents.....	3
1. Introduction	4
2. Getting Started	4
3. Features / Functions	5
3.1 Analyze	5
3.2 Battery Test	7
3.3 Chrysler VIN & SRI	9
3.4 Chrysler Flash File Folder	11
3.7 VSI-2534 Validation Tool	13
3.8 System Settings	15

1. Introduction

How it works: A PC is connected to a vehicle through the DG J2534 compliant “Pass-Thru device” to the OBD-II J1962 connector and on to the ECUs. The VSI-2534, for example, is one of DG Technologies J2534 compliant devices and is the translation interface between the PC and the vehicle or module.

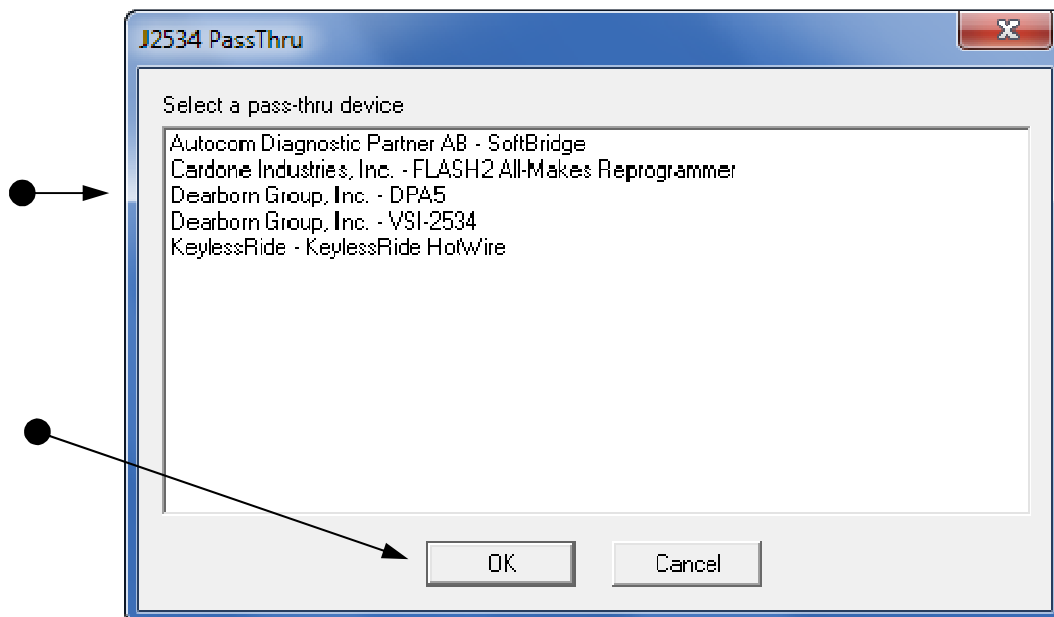
The user application on the PC sends and receives data to the vehicle using J2534 function calls to this device.

Provides support for: the most current version of the J2534 API (Version 04.04).

2. Getting Started



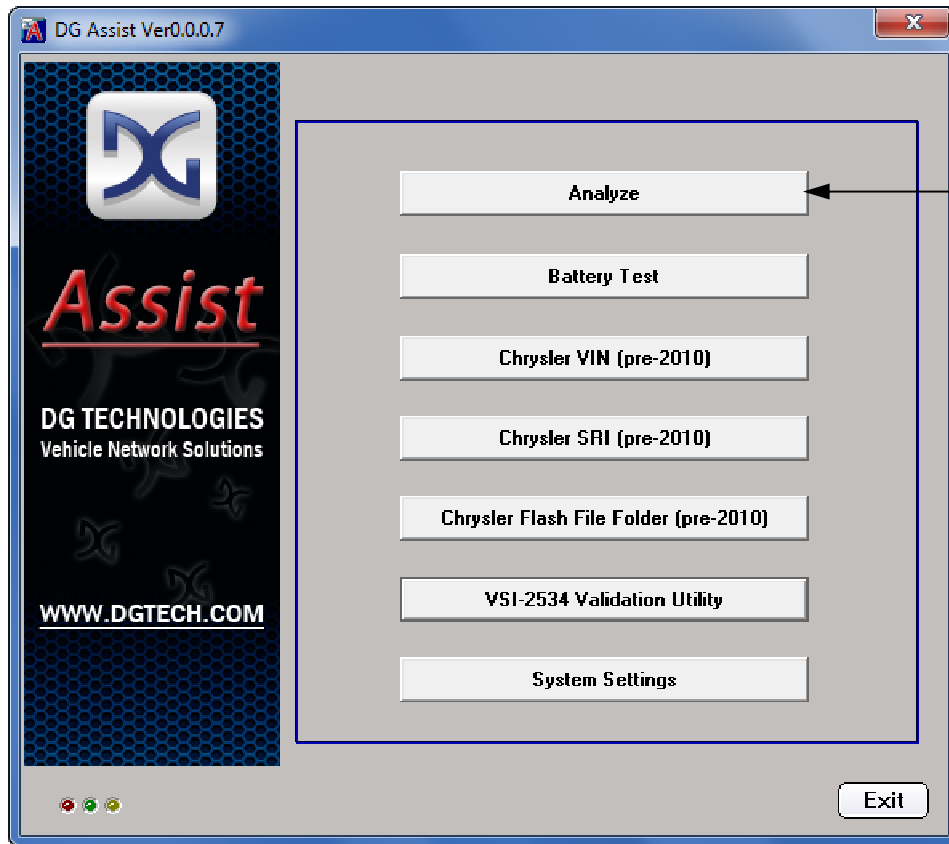
- Upon connecting the DG compliant J2534 device to the PC and vehicle or ECU, locate the icon shown and double-click on it.



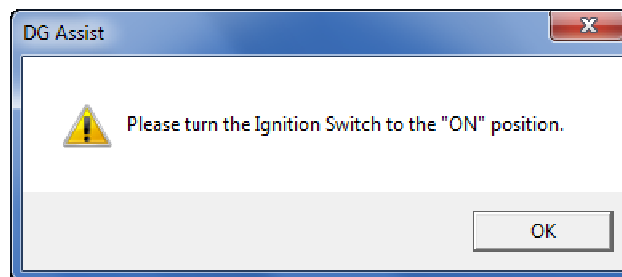
- Select the applicable DG J2534 compliant device being used and then “Ok”.

3. Features / Functions

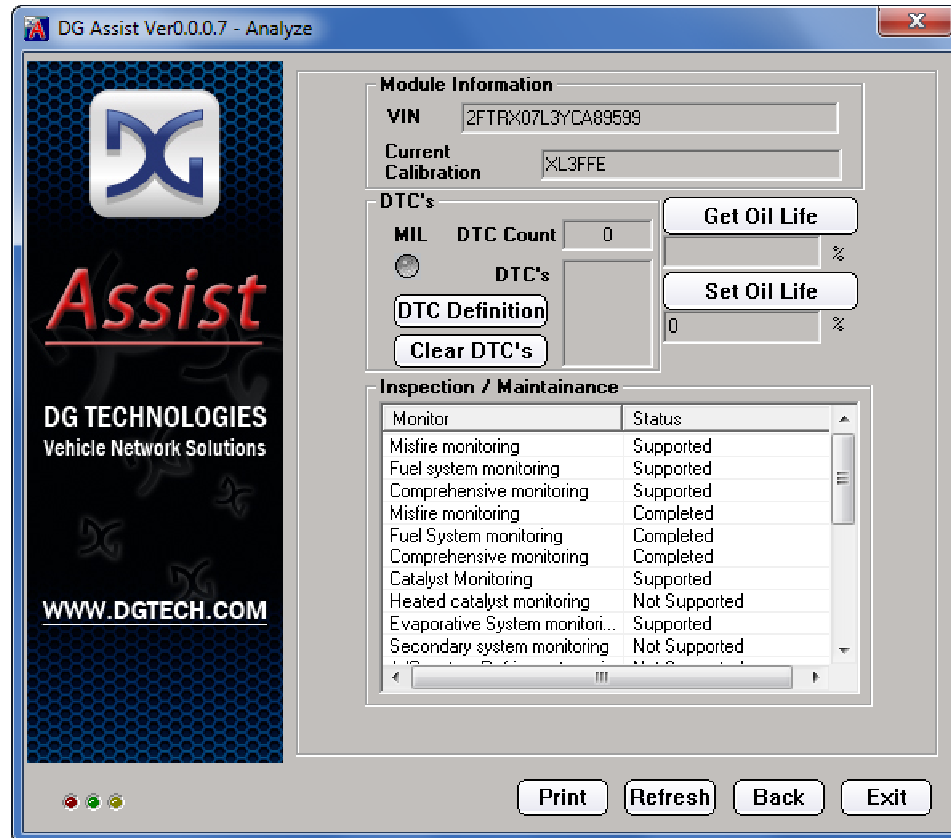
3.1 Analyze



- Click on the “Analyze” button.



- Turn the Ignition Switch “ON” and click “OK”.

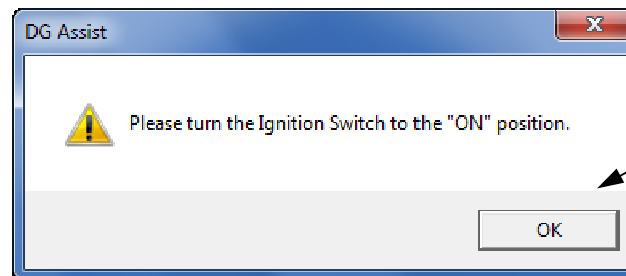


- **VIN:** Reads the VIN that is on the ECU. This can be used to verify the VIN number is correct to the VIN plate on the vehicle.
- **Current Calibration:** Shows the current calibration on the ECU. This can be used to identify and confirm whether a newer/later update is available for the specific vehicle when compared to the new, available OEM calibration information.
- **DTC's:** This area will provide a **DTC Count**, the specific DTC's that are stored and also give the ability to **Clear DTC's**. If a DTC is present, the **MIL** indicator will be illuminated in red. The **DTC Definition** link will take you to a spreadsheet to search for the definitions to those DTC's. Remember, in several cases, a successful reprogramming event may actually set a DTC, which must be cleared after completing the reprogramming event. Some OEM applications will also allow the clearing of DTC's as part of their process.
- **Get/Set Oil Life:** For vehicles equipped with this feature, reading and writing new values is available upon the oil change.
- **Inspection / Maintenance:** This feature will display the various IM monitors that are specific to the ECU/Vehicle the device is connected to. For the most accurate reading, the VSI-2534 should be connected directly to the vehicle.

3.2 Battery Test



- Click on the “Battery Test” button.



- Turn the Ignition Switch “ON” and click “OK”.



- Click on “Battery Test”.



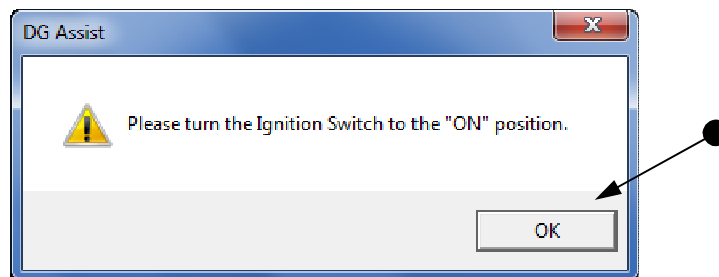
- Click on “Back” or “Exit”.

3.3 Chrysler VIN & SRI

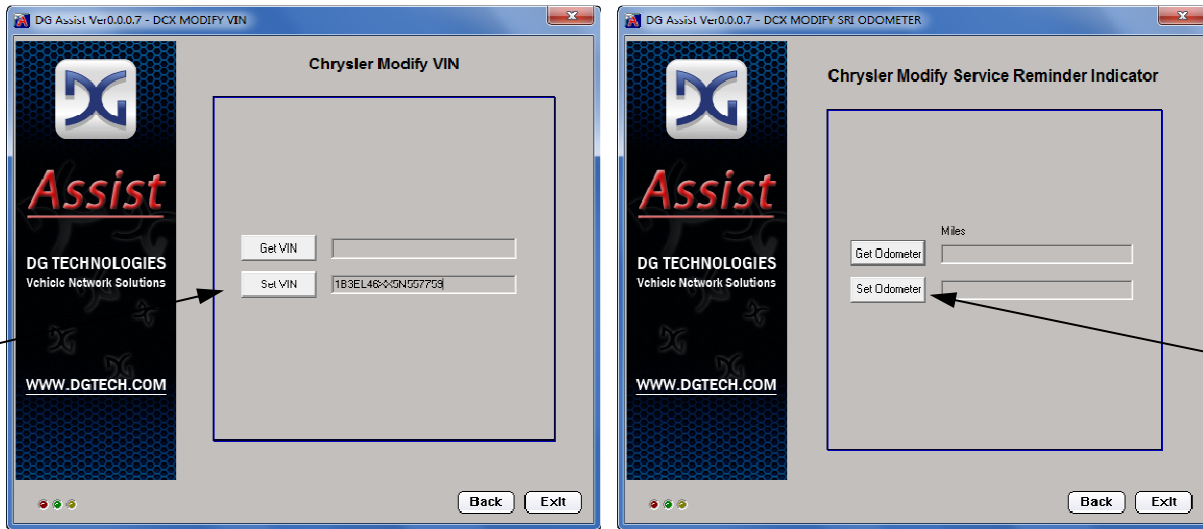
IMPORTANT NOTE: At the time of writing this Manual, Cummins Engine ECU VIN programming is NOT possible using this application.



- Click on the “Chrysler VIN” or “Chrysler SRI” button.

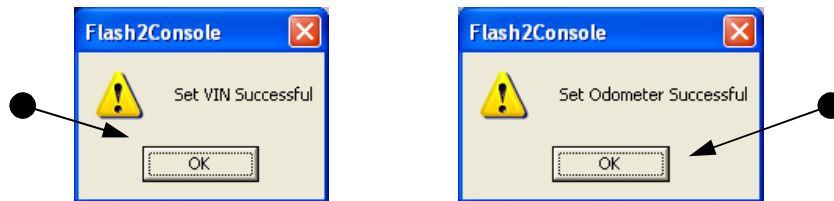


- Turn the Ignition Switch “ON” and click “OK”.



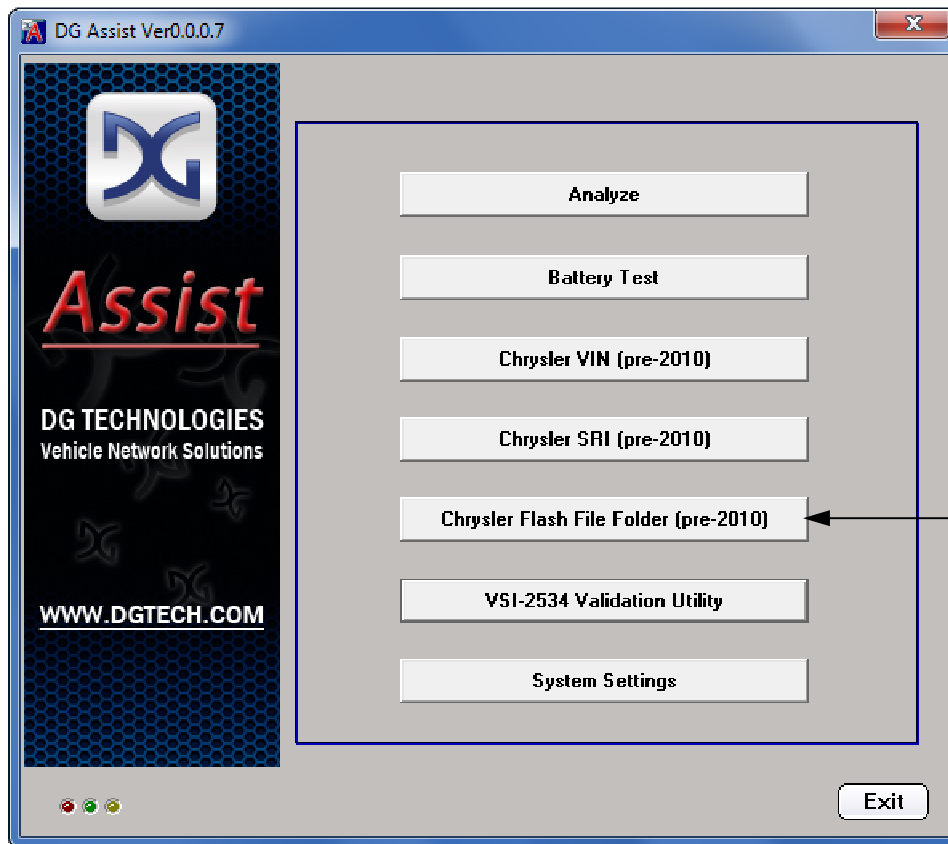
Note: Both the VIN and SRI (Set Reminder Indicator) Odometer programs work essentially the same.

- Enter either the VIN or SRI into gray box next to “Set VIN/Set Odometer” fields, then click “Set VIN” or “Set Odometer” to write the data to the ECU.

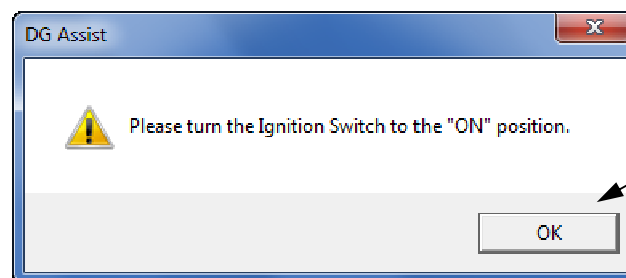


- Click “OK” when done.
- Optional: Click “Get VIN” or “Get Odometer” to check the VIN/SRI. **Note:** there is a tolerance for the SRI Odometer setting. Meaning, the number will not be exact as you entered, but will be *close*.

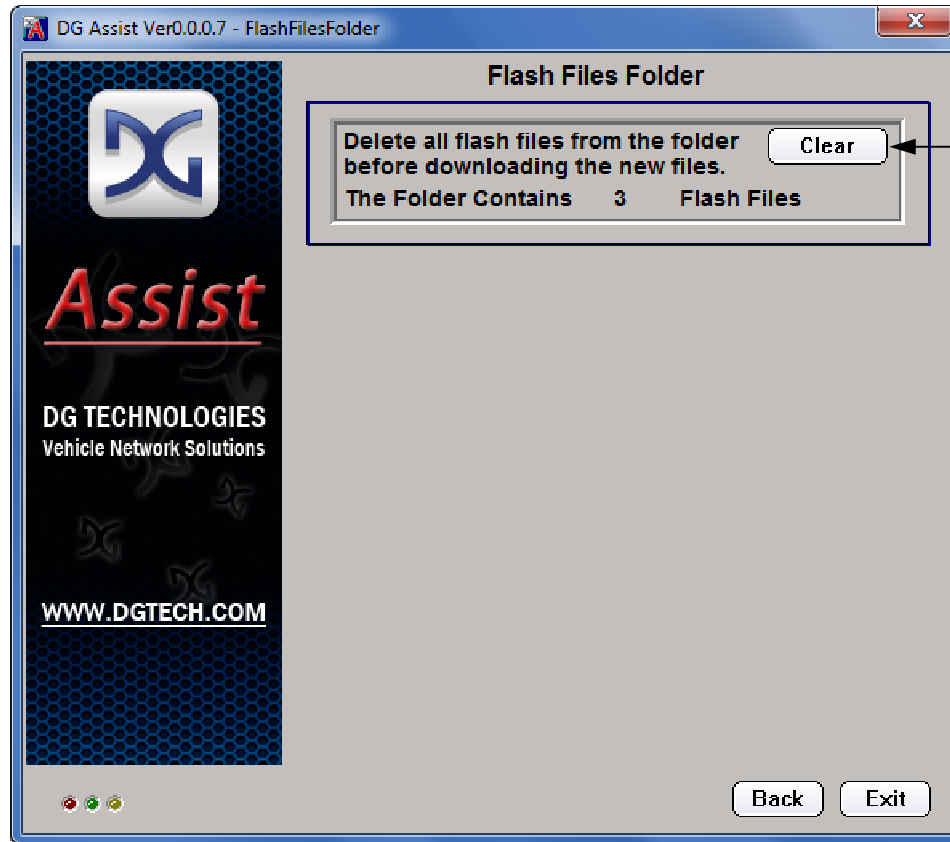
3.4 Chrysler Flash File Folder



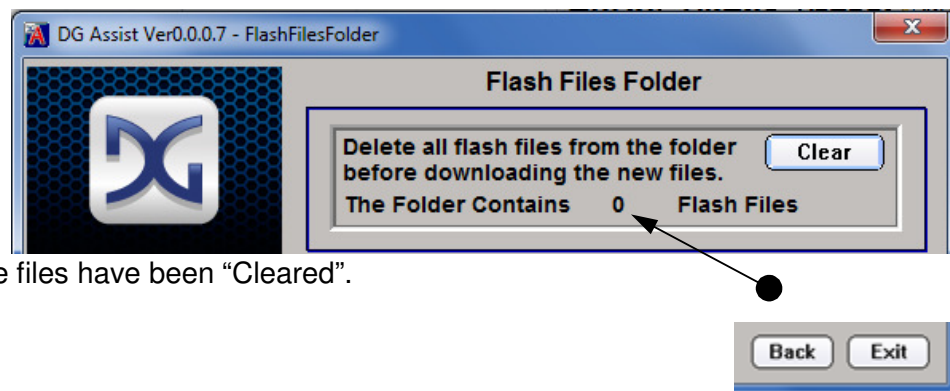
- Click on the “Chrysler Flash File Folder” button.



- Turn the Ignition Switch “ON” and click “OK”.

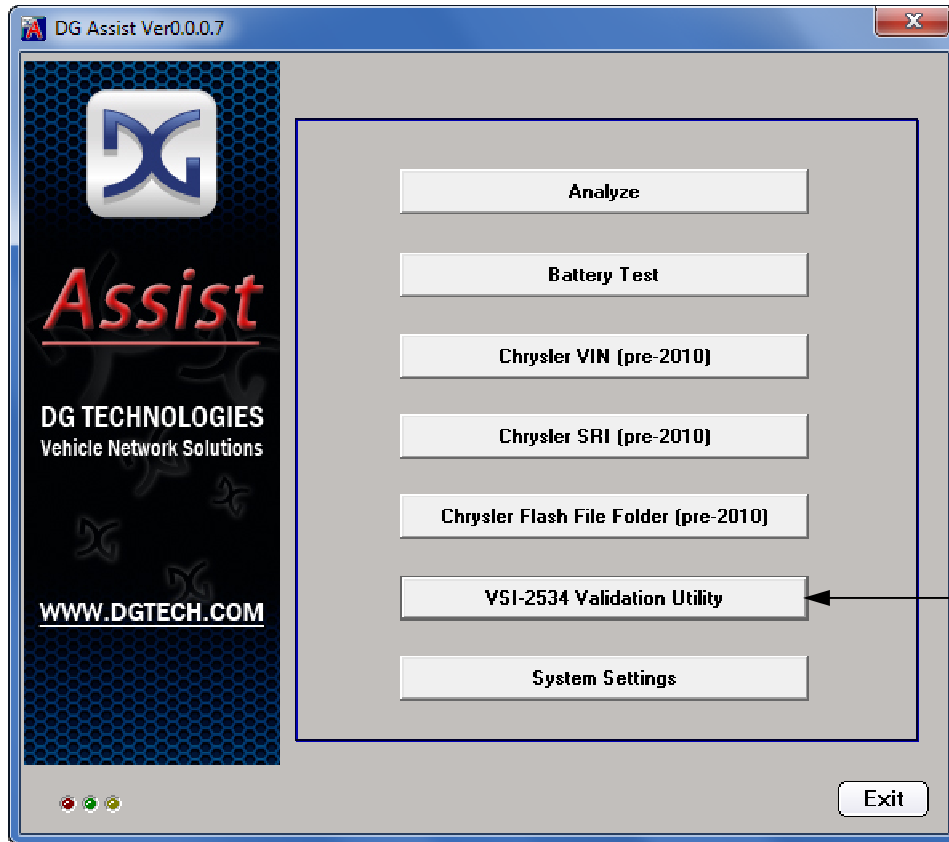


- **Note:** For Chrysler vehicles prior to 2010 (1996-2009), the reflash files are downloaded to the PC. It is important that prior to downloading new reflash files, the folder is clear of any previous reflash files or other files of any kind. Typically, there are 3 reflash files required for a normal reflash. This application is a good way to ensure the reflash folder is clear.
- To clear any files, click on “Clear”.

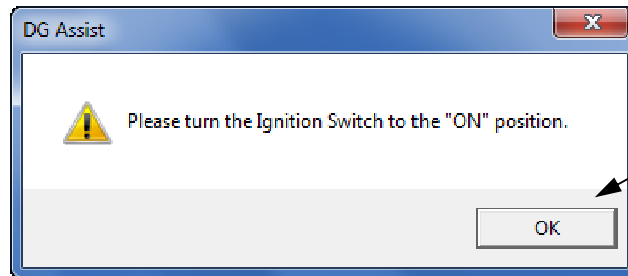


- The files have been “Cleared”.
- Click “Back” or “Exit”.

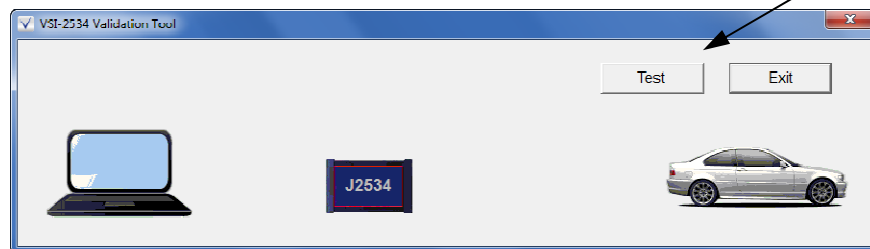
3.7 VSI-2534 Validation Tool



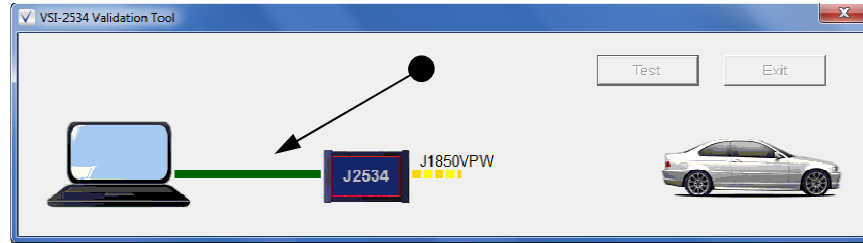
- Click on the “Chrysler Flash File Folder” button.



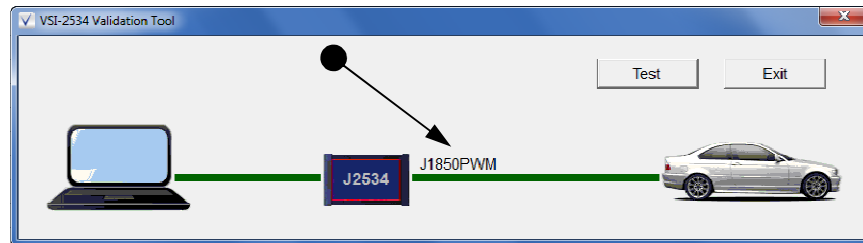
- Turn the Ignition Switch “ON” and click “OK”.



- Click on “Test”.

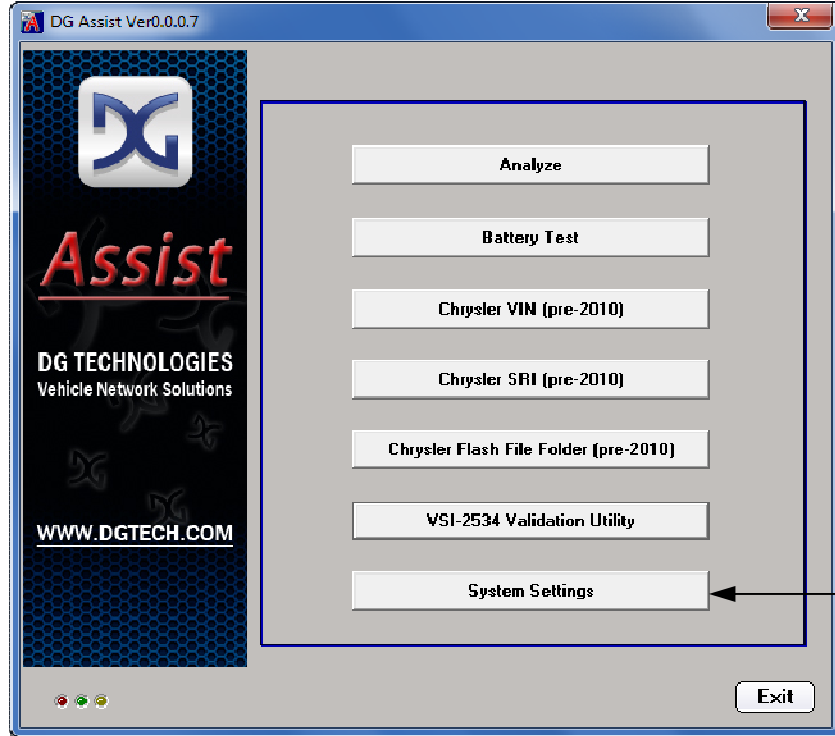


- First, the software will verify proper connection/communication between the PC and the VSI-2534. A solid green bar indicates a proper connection.

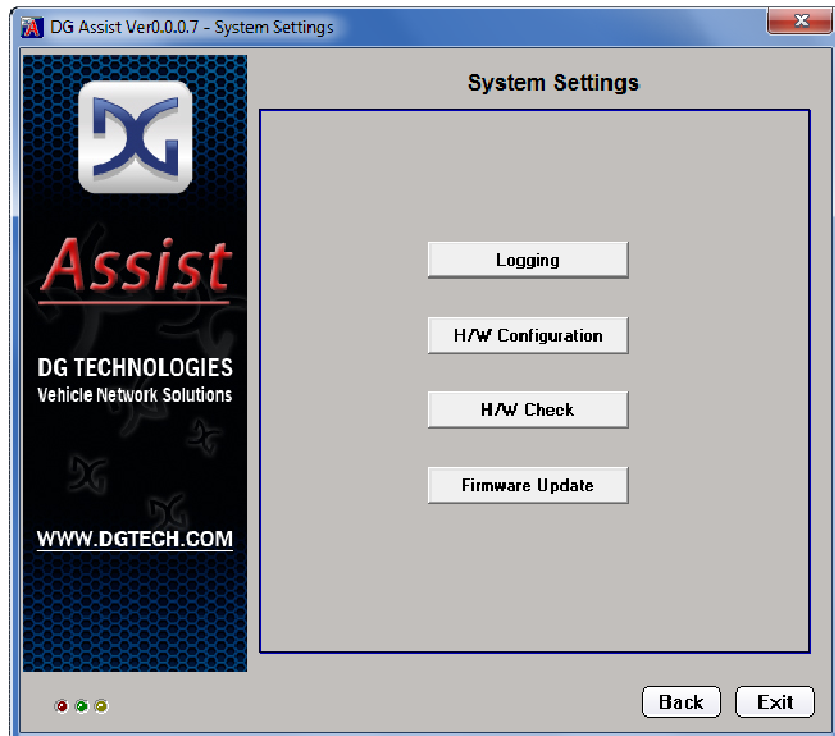


- Second, the software will then verify proper connection/communication between the VSI-2534 and the vehicle. A solid green bar indicates vehicle protocol and a proper connection.
- Note: If anything other than a green bar is shown:
 - Make sure the Ignition Key is in the "ON" position.
 - Make sure all cable connections are secure.
 - Between PC and VSI-2534:
 - Make sure USB is actively connected to VSI-2534...should have heard the familiar windows chime or Found New Hardware Wizard.
 - Be sure VSI-2534 is up-to-date with the latest software and firmware.
 - Between VSI-2534 and vehicle:
 - Make sure the Ignition Key is in the "ON" position.
 - Make sure DLC is not damaged and check pin-outs.

3.8 System Settings



- Click on the “System Settings” button.



- Instructions for these functions will be provided by Tech Support as needed.