

# VSI-2534 Vehicle Standard Interface



**DG TECHNOLOGIES**  
Vehicle Network Solutions

The go-to J2534 reprogramming and diagnostic device providing Mechanics, Technicians, Locksmiths and Vehicle Security Professionals Complete Automotive Coverage for Engine, Brakes, Transmission & Body

## Differentiation

- Out-of-the-box diagnostic and reprogramming capability in a single device.
- Industry first 2 year warranty

## Key Features

- OBDII to laptop communication using OBDII/serial cable
- Adapter to PC validation software
- High speed USB to CAN interface connectivity
- GM Tech2Win Compatible
- GM GDS2 Compatible
- Includes DG Diagnostics OBDII
- Includes DG Update software



European

Domestic

Asian



## Benefits

- Provides advanced dealership diagnostics with OEM software
- Technicians kit for J2534 module programming
- Complete diagnostic functionality
- Freeze frame, data monitoring and data logging
- Read/Clear Codes
- Key Programming\*
- Immobilizer Adaptation\*
- Free personalized technical support. Phone or email
- Complete J2534-1 compliance with J2534-2 support

\*OEM software subscription may be required

## Protocols Supported

- ISO 14230 (KWP2000)
- SCI and GM-UART
- MSCAN.
- J1850 PWM (Ford SCP)
- J1850 VPWM (GM Class 2 & Chrysler)
- CAN (ISO 11898, J2284)
- GM LAN (HSCAN + SWCAN)
- ISO 15765
- ISO 9141
- ISO 14230
- ISO 22900

We Support





# VSI-2534 Included DG Software and OEM Diagnostics Compatibility

## DG Diagnostics OBDII

OBDII diagnostic functionality for light and medium-duty vehicles to quickly access all emissions-related information

## DG Assist

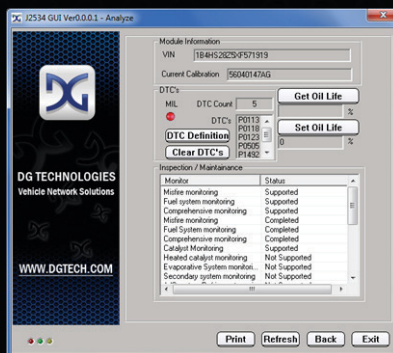
Provides vehicle status reporting functionality along with unique features for Chrysler including VIN and SRI read/write capabilities.

## DG VSI-2534 Validation Utility

Allows technicians to clearly see if the vehicle network is properly communicating with the VSI-2534.

OBD Monitor Test Results						ECM To Monitor: 0x00000010	
Test ID	Comp ID	Test Val	Min Val	Max Val	Result		
1	17	1024	410		Pass		
1	33	1024	410		Pass		
2	17	0	2088		Pass		
2	33	0	2088		Pass		
3	1	461	0	2088	Pass		
3	2	461	0		Pass		
16	17	32		51	Pass		
16	33	32		51	Pass		
65	17	65535	64512		Pass		
65	33	65535			Pass		
89	32	0	65535		Pass		
74	48	65535	65535		Pass		
75	48	0	26214		Pass		
92	0	0	1442		Pass		
81	1	0	1442		Pass		
81	2	0	1442		Pass		
81	3	0	1442		Pass		
81	4	0	1442		Pass		
81	5	0	1442		Pass		
81	6	0	1442		Pass		
81	7	0	1442		Pass		
81	8	0	1442		Pass		
82	0	0			Pass		

Read OBD Monitor Test Results



## OEM Diagnostic & Reprogramming Compatibility

VSI-2534 is compatible with a broad spectrum of subscription-based OEM software programs

### GM GDS2



### GM Tech2Win



### Toyota Techstream



### VW ODIS



Acura\*  
Aston Martin  
Audi\*  
Bentley\*  
BMW\*  
Chrysler\*  
Ferrari

Ford/Lincoln/Mercury\*  
General Motors\*  
Honda\*  
Hyundai\*  
Infiniti\*  
Isuzu\*  
Jaguar\*

Kia\*  
Land Rover\*  
Lexus\*  
Maserati  
Mazda\*  
Mercedes Benz\*

Mini\*  
Mitsubishi  
Nissan\*  
Porsche\*  
Rolls Royce\*  
Saab\*

Smart  
Subaru  
Suzuki  
Toyota/Scion\*  
Volkswagen\*  
Volvo\*

\*Tested, validated and used by OEMs