

## DPA XL Bluetooth

The DPA XL version of Bluetooth has security built-in where the Bluetooth Device ID can be hidden or non-discoverable by other Bluetooth devices. This process is **different** from previous DPA versions, such as the DPA5.

BT is should not be used for ECU programming. These

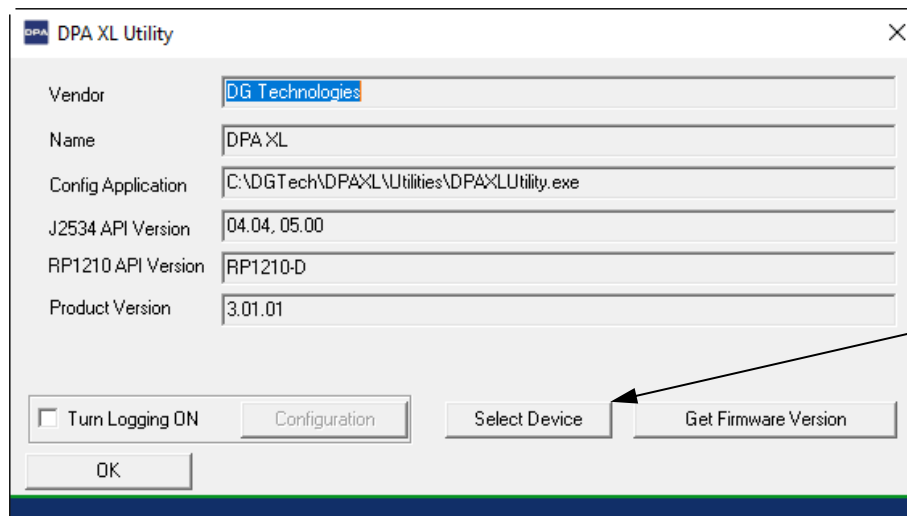
### Configuring DPA XL for Bluetooth:

Visual image of connection like VSI NxGen manual has

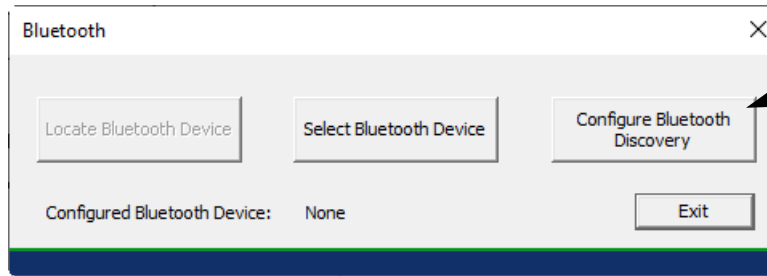
1. Once the DPA XL drivers are installed on PC, plug-in USB to DPA XL, then USB to PC.



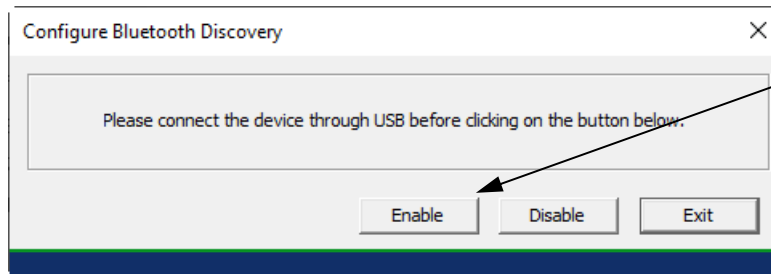
2. Go to  → DG Tech DPA XL → DPA XL Config Utility. Select "Yes".



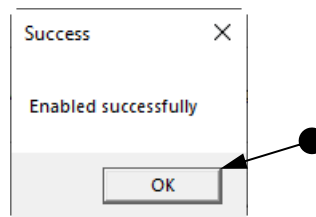
3. Select "Select Device".



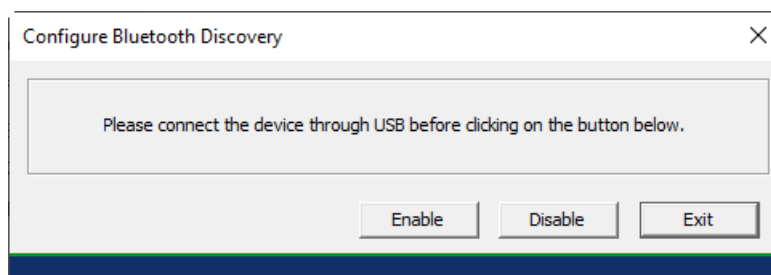
4. Select "Configure Bluetooth Discovery".



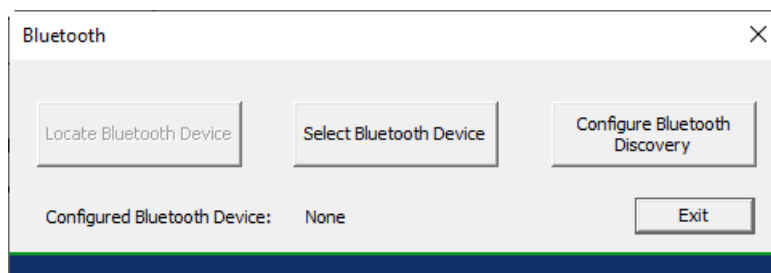
5. Select "Enable"



6. Select "OK"

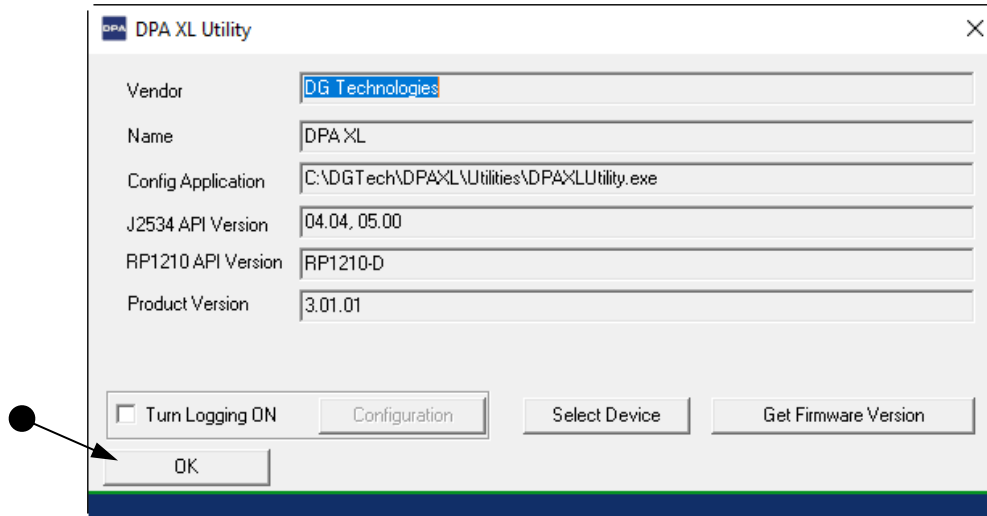


7. Select "Exit".



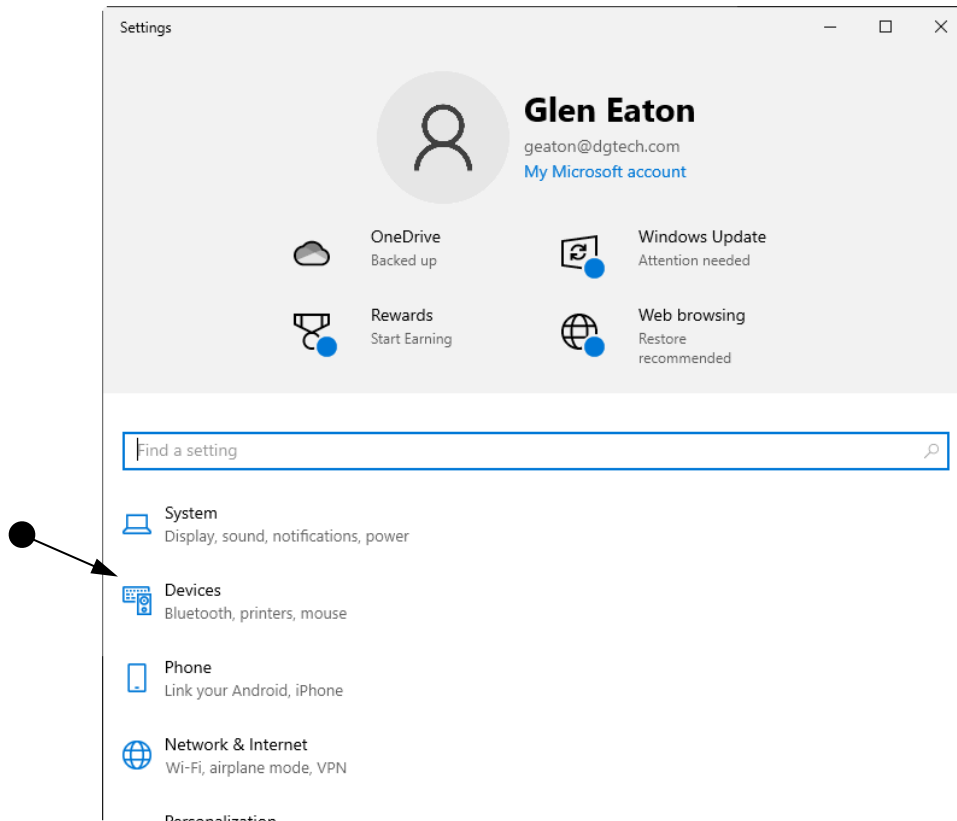



8. Select "Exit".

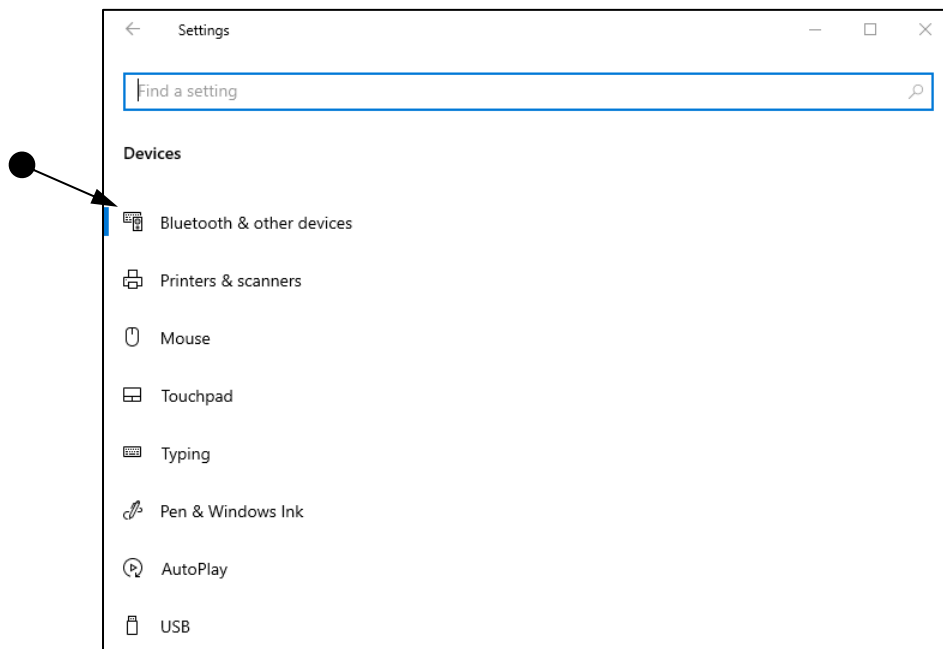


9. Select on "OK".

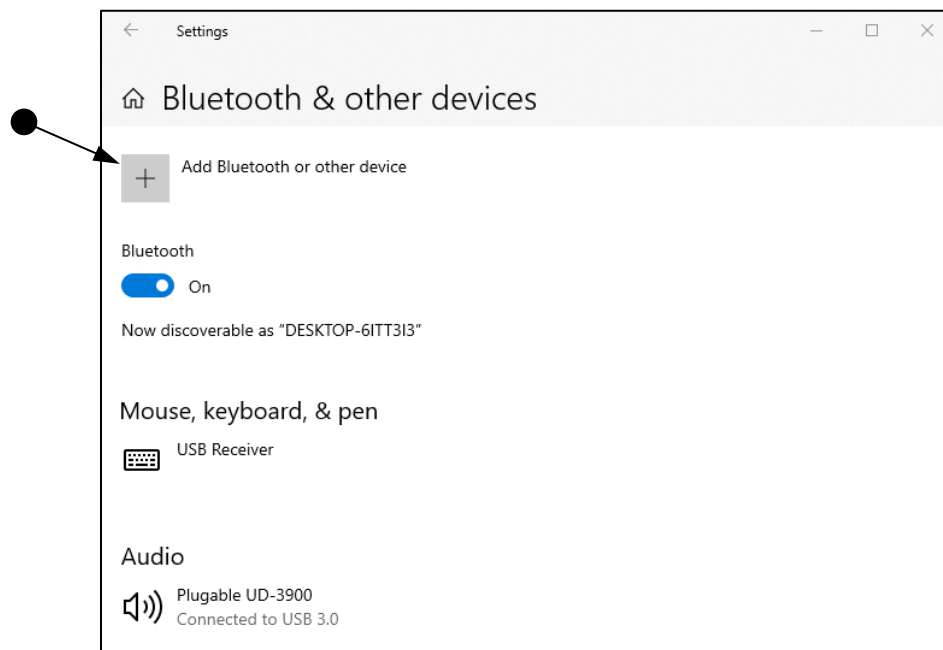
### Adding / Pairing DPA XL to PC:



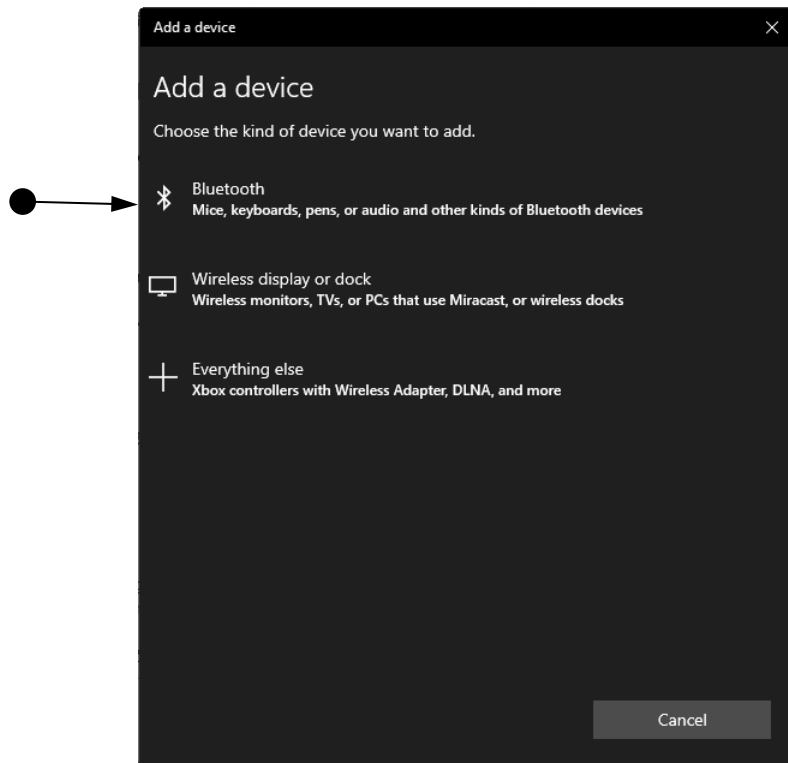
10. Go to  →  **Settings** and select “Devices” (Note: Screens may vary depending on Windows version & scale.)



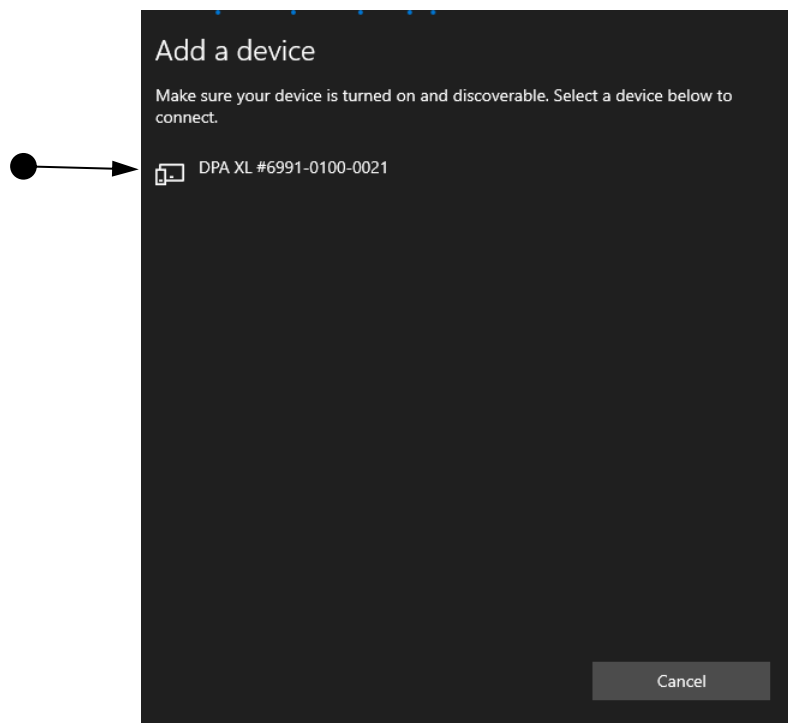
11. Select “Bluetooth & other devices”.



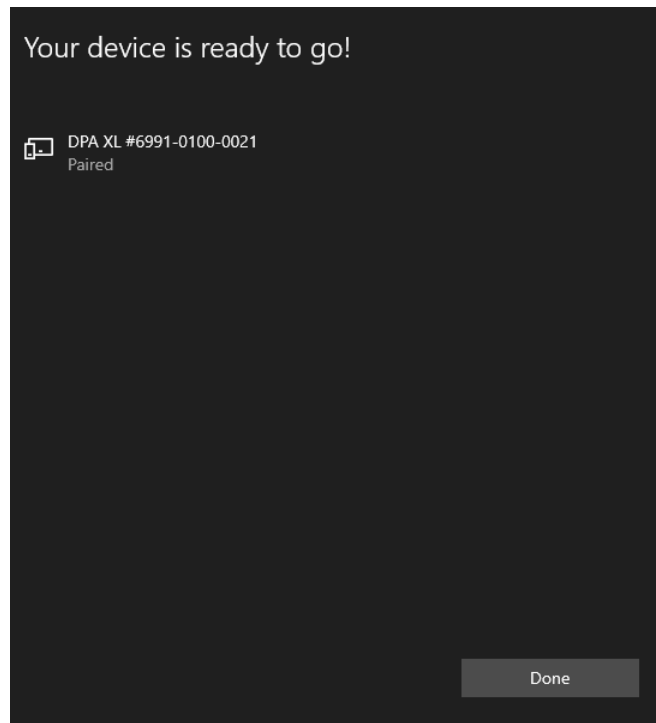
12. Select “Add Bluetooth or other devices”



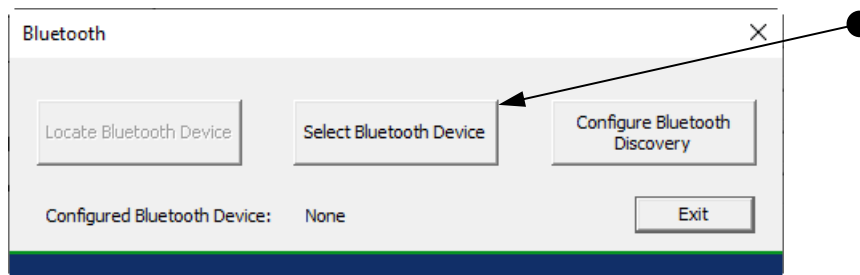
13. Select "Bluetooth".



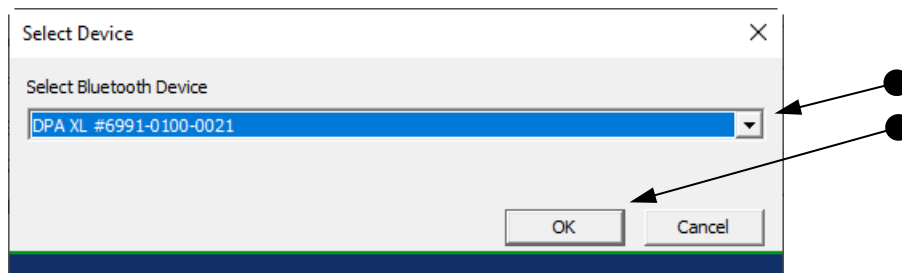
14. Wait for a moment for the "DPA XL..." device to appear and select it.



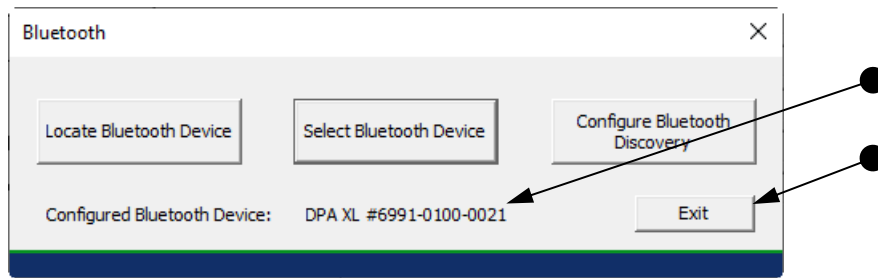
15. Connected! Select “Done” & close out of “Settings” screen.



16. Go back to the still-open window shown above and select “Select Bluetooth Device”



17. From the drop-down menu, select the “DPA XL #xxxx-xxxx-xxxx” device, then select “OK”. (Note: Device ID be confirmed by looking at the back of the DPA XL and the bar code number. First 4 digits of the bar code do not apply.)



18. Notice the Device ID is now shown at the bottom of the screenshot above. Select “Exit” OR to enable “CyberGuard” so other devices do not recognize the DPA XL device ID, continue below at Step 22.

### Activating CyberGuard:




What is CyberGuard in relation to Bluetooth?? If there are multiple Bluetooth compatible devices (PC’s, cellphones, etc.) in the area, for example, and you don’t want your DPA XL to be seen or “discovered” by those devices, you can do that thru the “Configure Bluetooth Discovery” button. In the “Configure Bluetooth Discovery”, you can “Enable” or “Disable” this discovery.

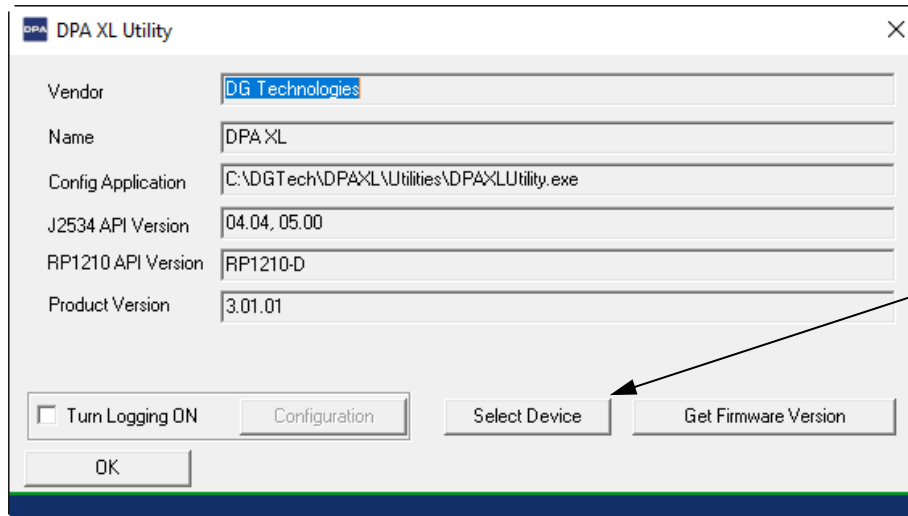
To “Disable” Bluetooth discovery so your DPA XL can’t be seen by other Bluetooth compatible devices:

Visual image of connection like VSI NxGen

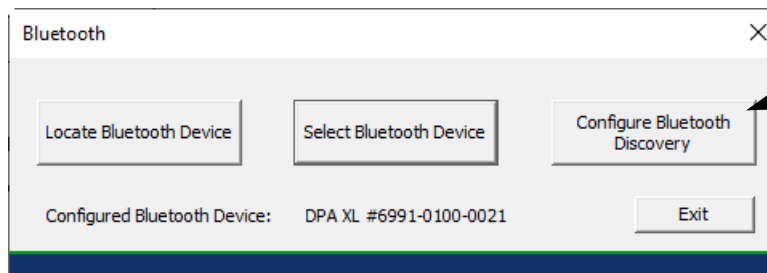
19. Plug-in USB to the DPA XL, then USB to the PC.



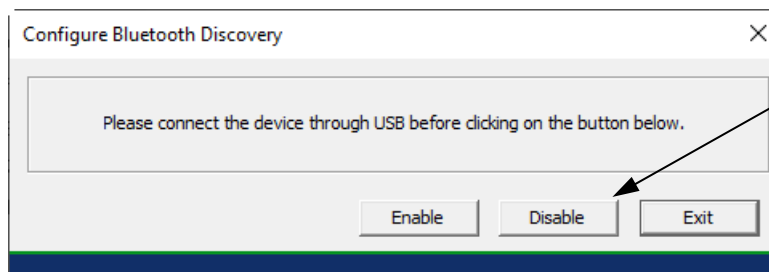
20. Go to  → DG Tech DPA XL → DPA XL Config Utility. Select “Yes”.



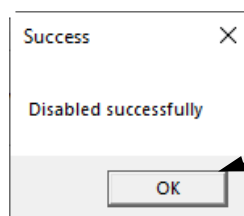
21. Select "Select Device".



22. Select "Configure Bluetooth Discovery".

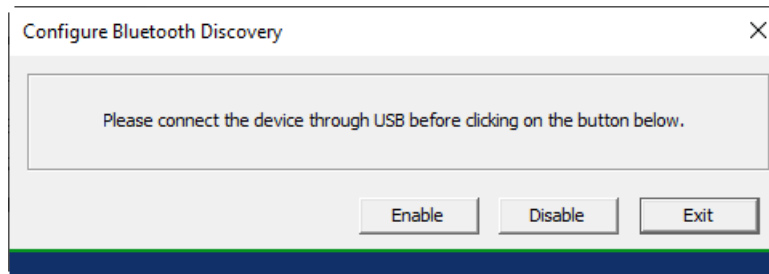


23. Select "Disable"

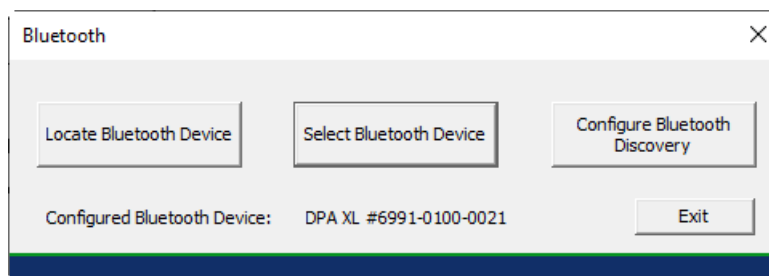




24. Select “OK”



25. Select “Exit”.



26. Select “Exit”.

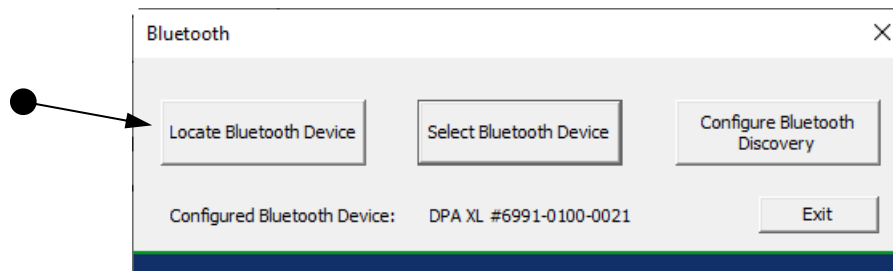
To “Enable” Bluetooth discovery so the DPA XL can be seen by other Bluetooth devices or be “discovered” by those devices, follow steps 19-22 above, select “Enable” in step 23, then follow remaining steps 24-26.

### Locating DPA XL to PC Pairings

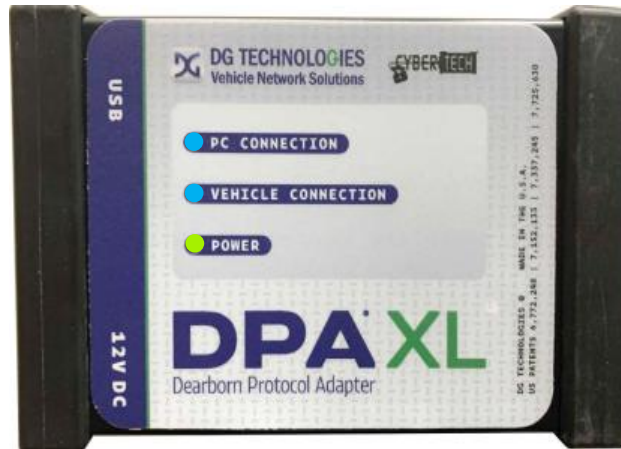
To configure multiple PC’s with multiple DPA XL’s, follow the same process above. If you are unsure which DPA XL the PC is currently paired to, use the “Locate Bluetooth Device”.

DPA XL Bluetooth Locator

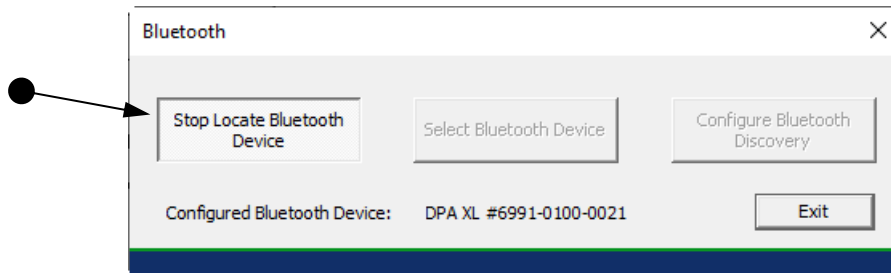
27. On a PC, follow steps 19-21 above.



28. Select “Locate Bluetooth Device”.



29. Find the DPA XL with the “PC Connection” and “Vehicle Connection” LED’s that are blinking blue.



30. Once found, select “Stop Locate Bluetooth Device”, then “Exit”, then “OK”.